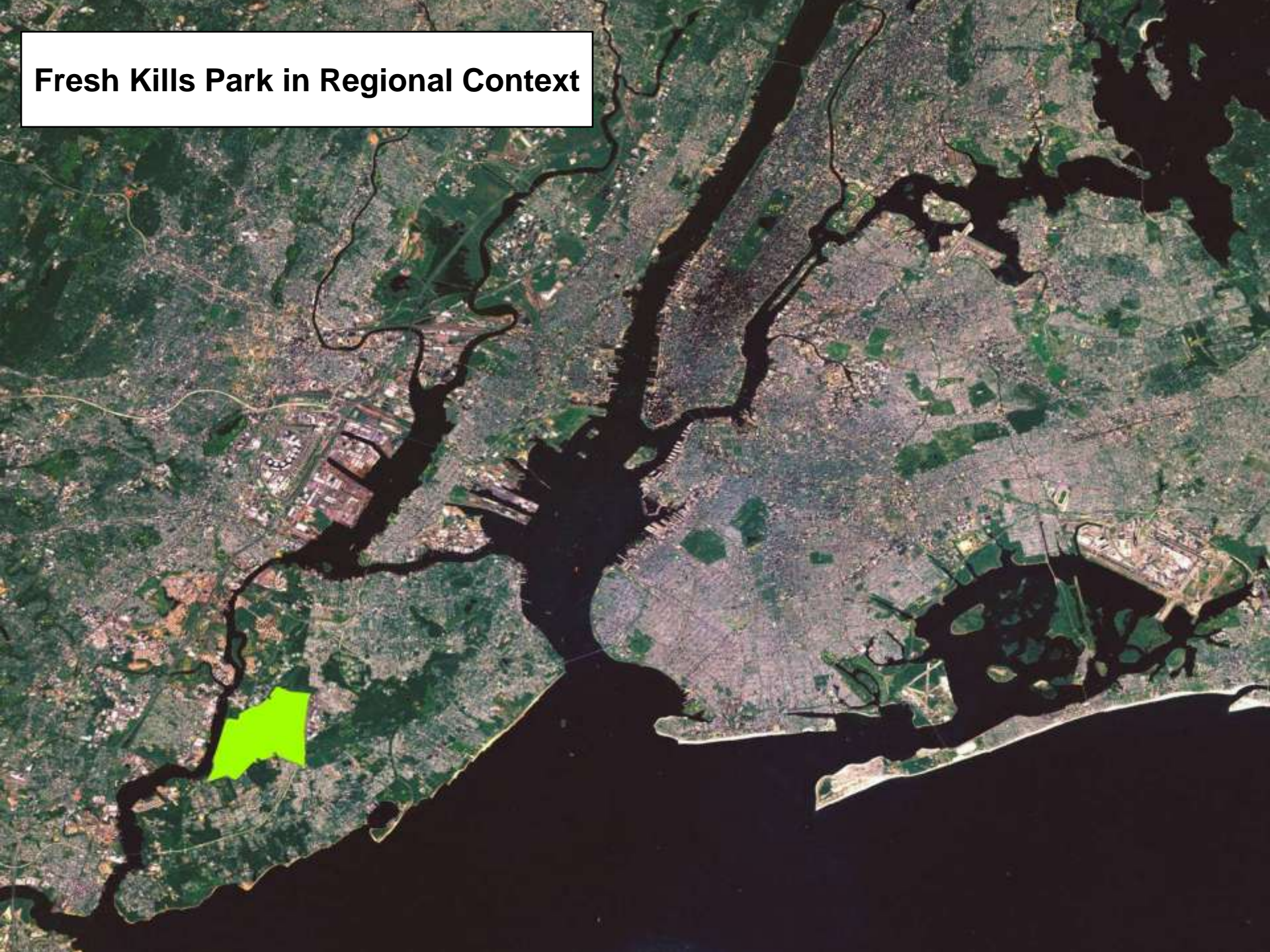


# Freshkills Park



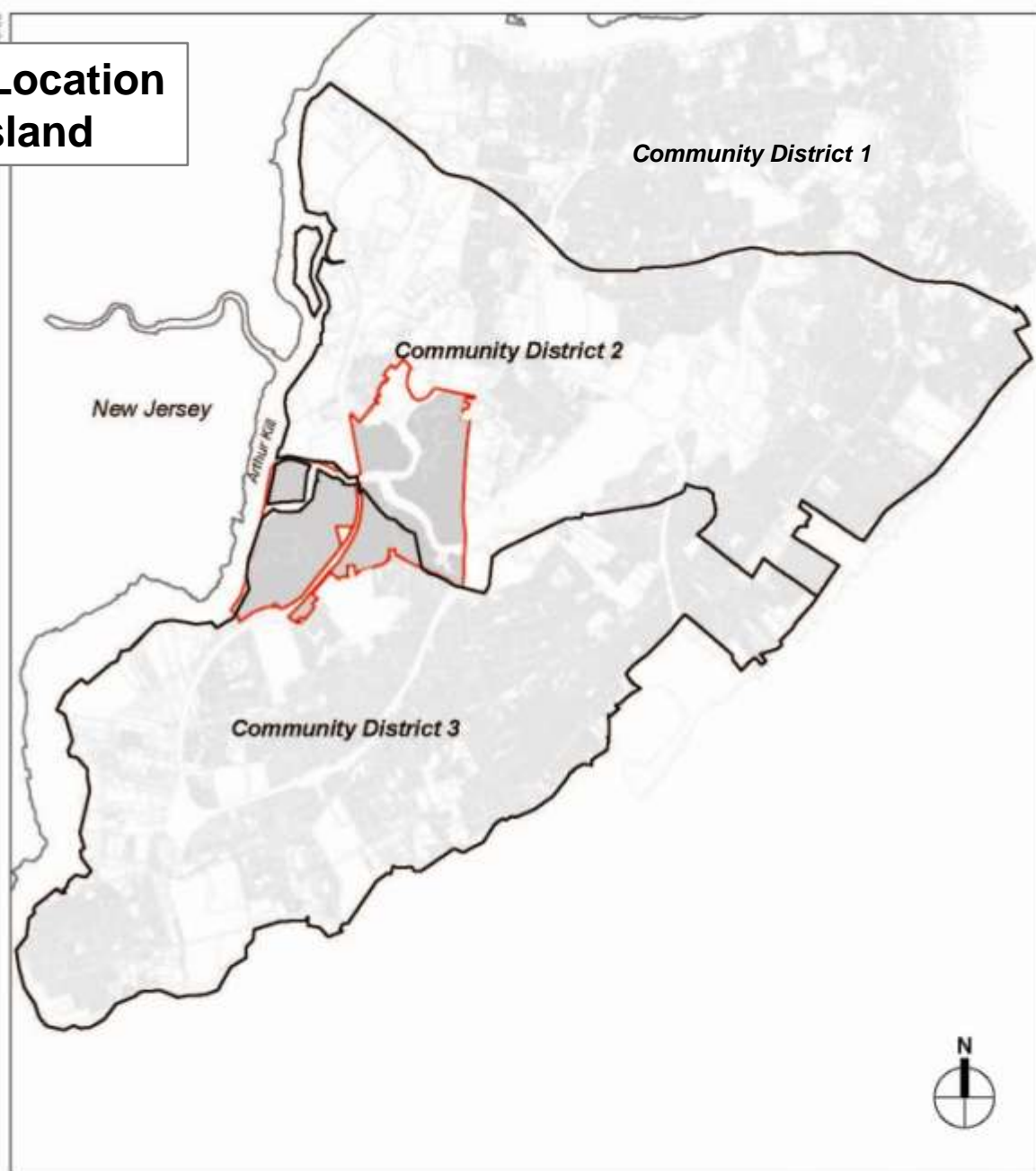
City of New York  
Parks & Recreation  
Michael R. Bloomberg, Mayor  
Adrian Benepe, Commissioner

# Fresh Kills Park in Regional Context





# Fresh Kills Location On Staten Island



 Project Site  
 Community District Boundary

0 1 2 MILES  
SCALE

# THE SITE TODAY



New Jersey

TRAVIS

William T. Davis Wildlife Refuge

NEW SPRINGVILLE

ARTHUR KILL

West Shore Expressway

MOUND 3/4

Richmond Avenue

Little Fresh Kills

Isle of Meadows

Kills

Main Creek

MOUND 6/7

Great Fresh

Richmond Creek

LaTourette Park

MOUND 1/9

MOUND 2/8

Arthur Kill Road

Arden Heights Woods

ARDEN HEIGHTS



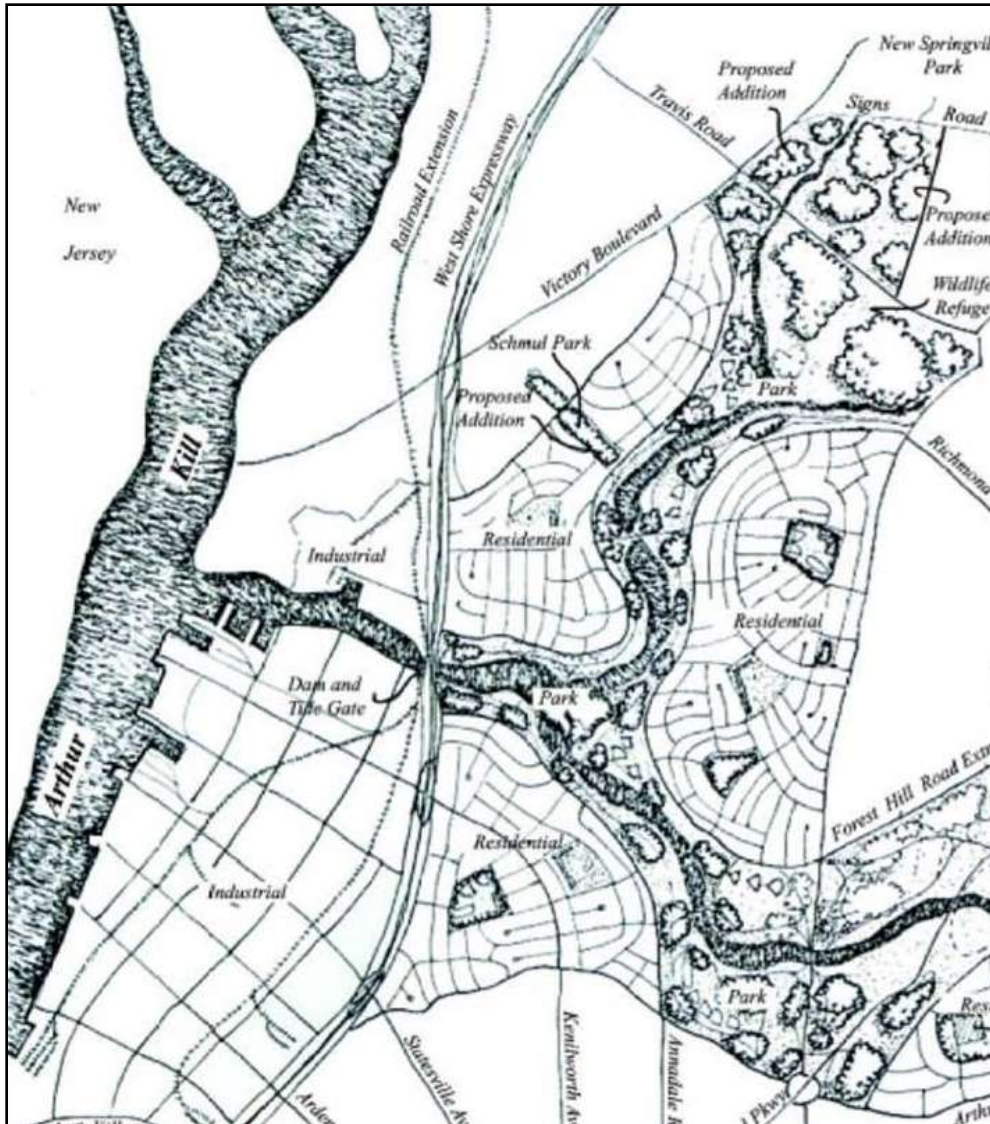


**FRESH KILLS**  
*approx. 1912*

**Prior to**  
**Landfilling**



# ROBERT MOSES' VISION FOR FRESH KILLS

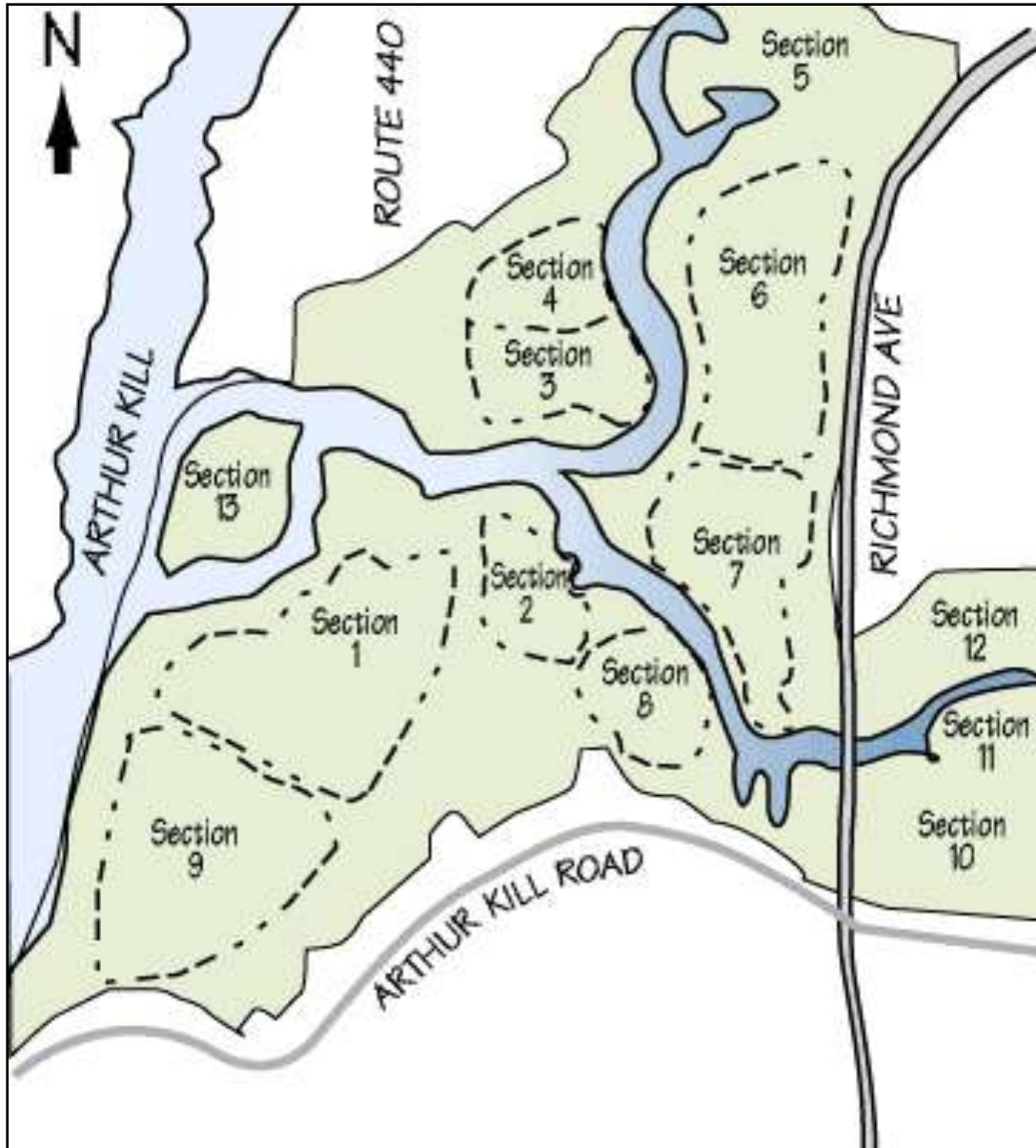


## GOALS:

- Recover “nuisance” marshlands for productive use
- Landfilled material should be used to raise land elevations for subsequent development

## END USE PLAN INCLUDED:

- Industrial development along the Arthur Kill
- Parkland along Richmond and Main Creeks
- Residential development north, south and east of park areas
- Circulation network



## FRESH KILLS

DSNY Landfilling  
Operations

1948-2001





# FRESH KILLS PARK: International Design Competition



**Field Operations**

**Conceptual  
Site Plan**

**2001-2002**



# PLANNING PHASE 2003 - 2006



# COMMUNITY ENGAGEMENT

**Extensive community input was solicited throughout the planning phase.**

**The resulting Draft Master Plan reflects many of the stated needs and desires of the community:**

- Keep the site passive and natural**
- Retain the large scale open spaces**
- Paths and trails for long walks, cycle rides and horses**
- Access to the water is important**
- Limit commercial activities to the core of the site**
- Sports and recreation facilities desirable**
- Demonstrate renewable energy**
- Demonstrate ecological techniques of land reclamation**
- Provide a connection between Richmond Avenue and the West Shore Expressway**



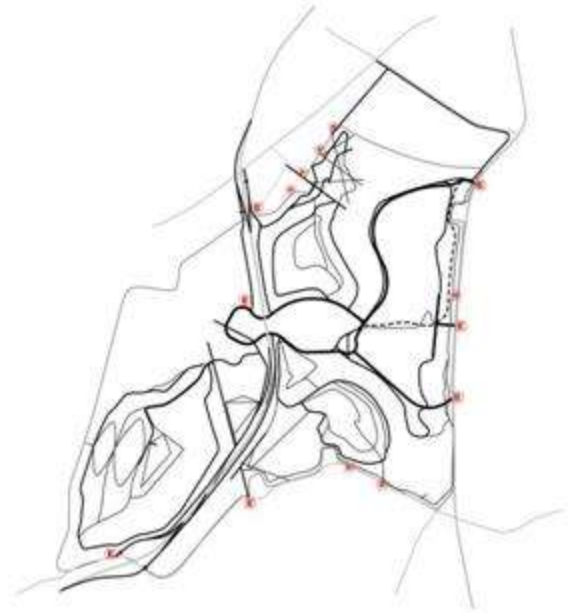
# THREE COORDINATED SYSTEMS ORGANIZE THIS VAST LANDSCAPE



1. HABITAT

2. PROGRAM

3. CIRCULATION





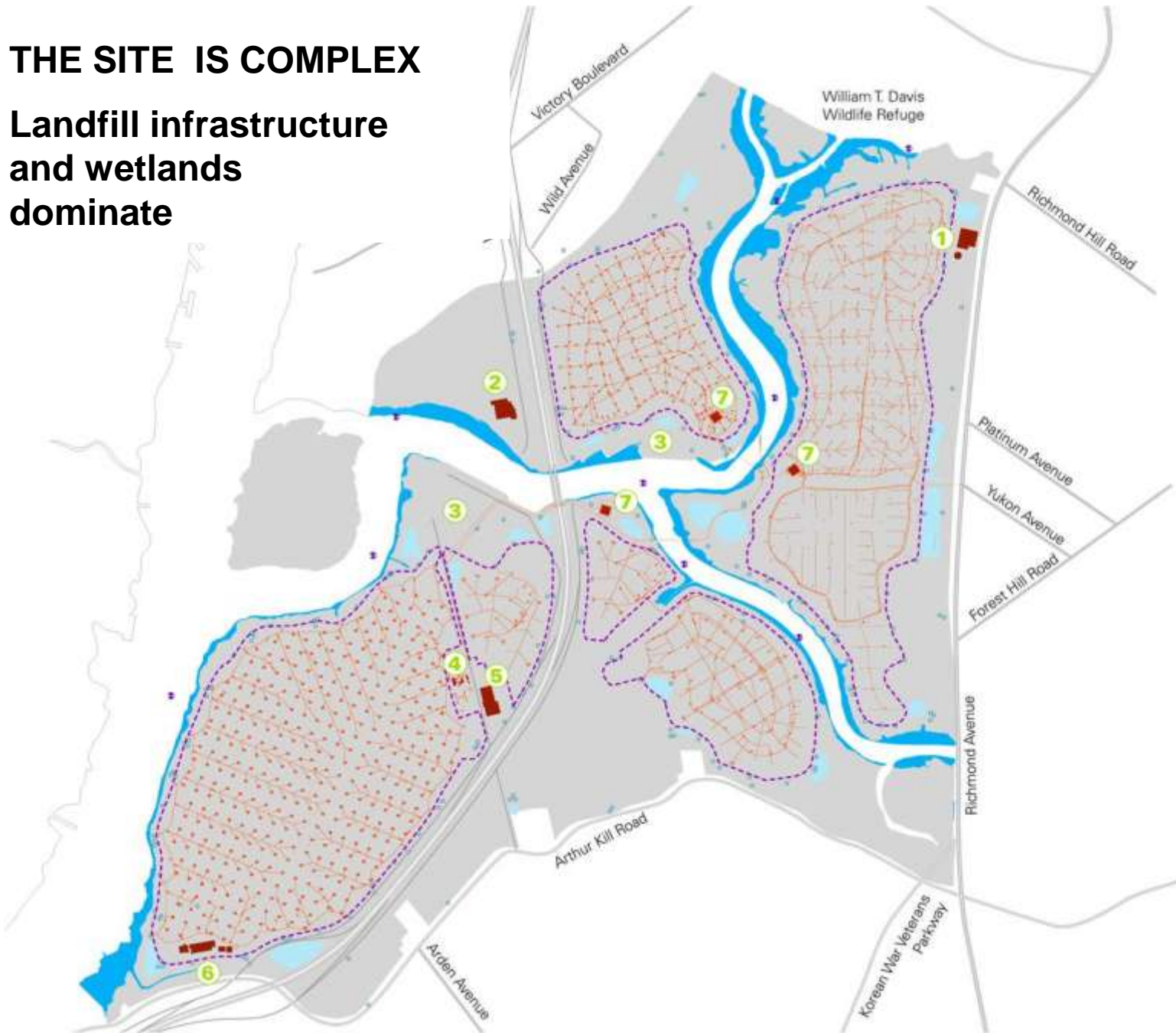
**FRESH KILLS PARK  
DRAFT MASTER PLAN  
Site Plan 2006**





# THE SITE IS COMPLEX

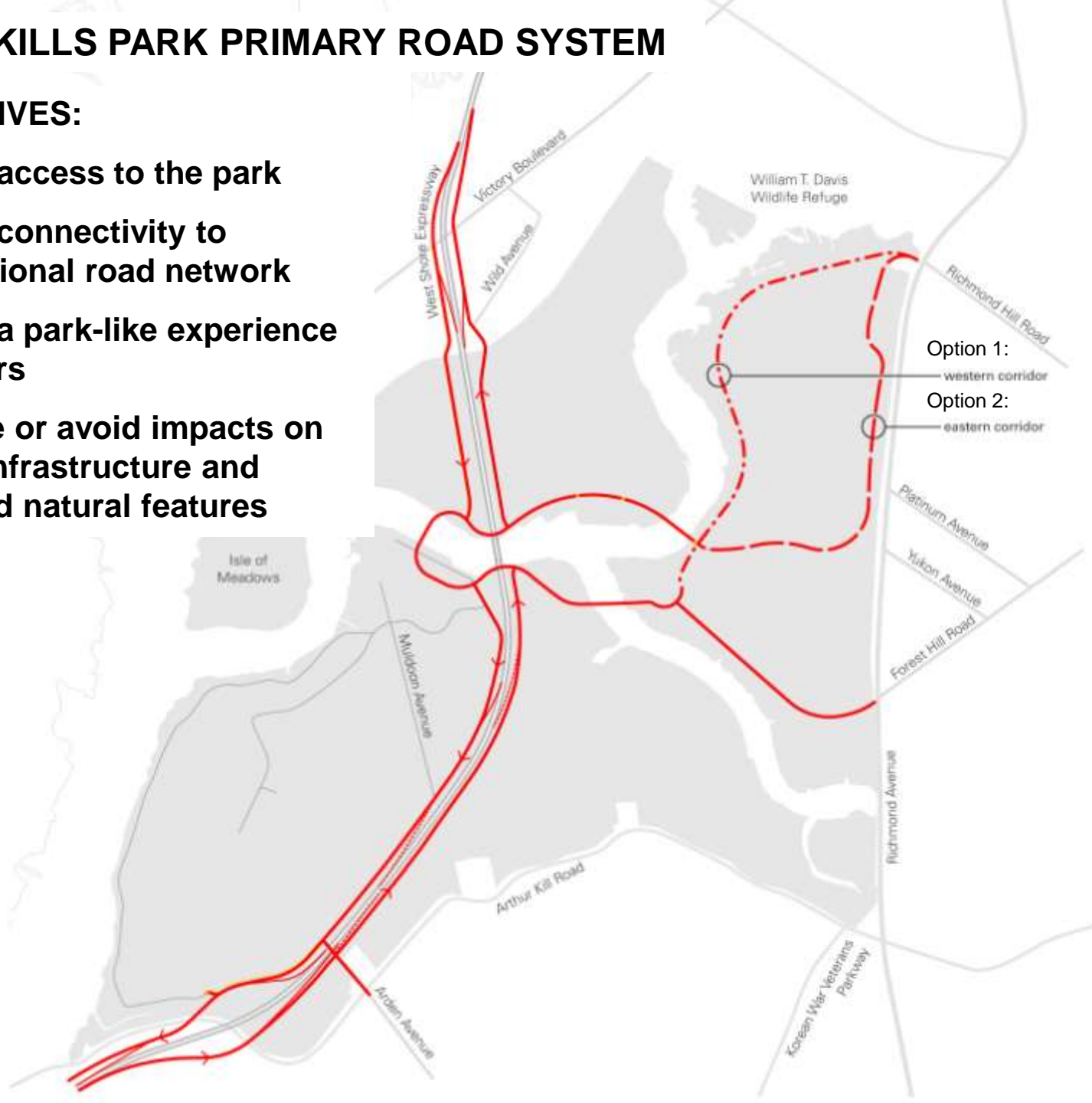
Landfill infrastructure  
and wetlands  
dominate



# FRESH KILLS PARK PRIMARY ROAD SYSTEM

## OBJECTIVES:

- Provide access to the park
- Provide connectivity to local/regional road network
- Provide a park-like experience for drivers
- Minimize or avoid impacts on landfill infrastructure and protected natural features

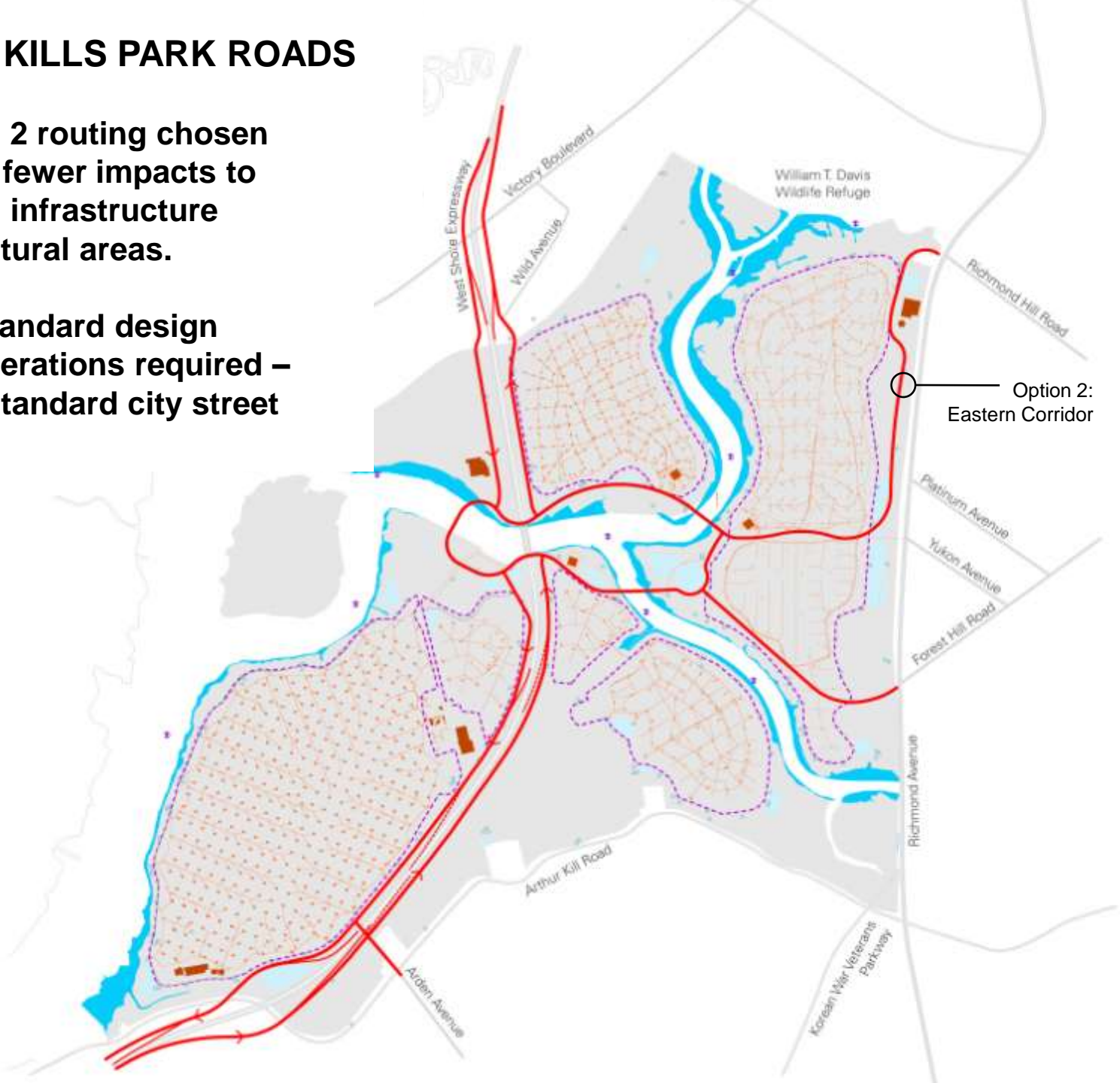




# FRESH KILLS PARK ROADS

Option 2 routing chosen due to fewer impacts to landfill infrastructure and natural areas.

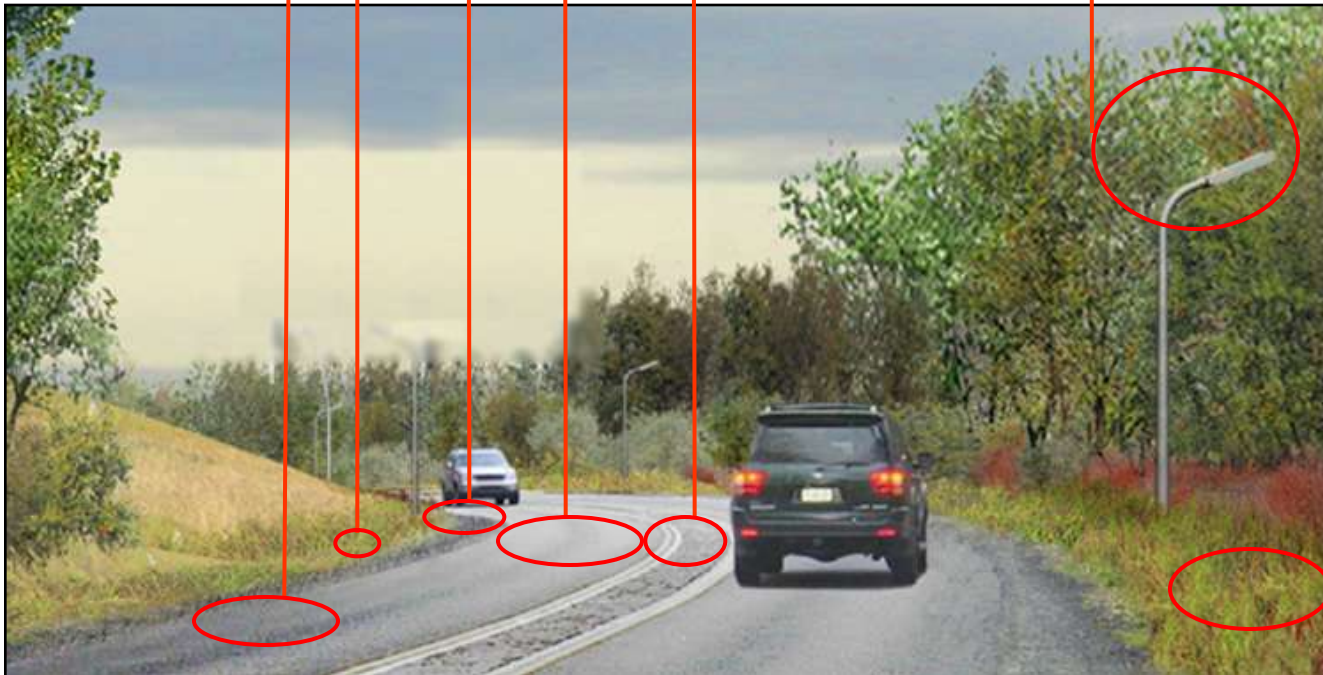
Non-standard design considerations required – not a standard city street



# Fresh Kills Park Roadway Design & Construction Considerations

- Narrow travel lanes
- Soft shoulders
- No curb
- Flexible Pavement

- Textured median
- Non-standard lighting
- No piped drainage



*Rendering of 2-lane Road Option – 4-lanes also under consideration*



# FRESH KILLS PARK CITY MAP CHANGE – PROPOSED MAPPING ACTIONS

- Parkland Addition Mapping
- Public Place Mapping (road right-of-way)
- De-mapping Parkland
- Eliminating Unbuilt “Paper” and “Record” Streets

# PARK PROJECT BOUNDARY

- 2,180 acres
- All City-owned property
- Excludes DSNY District Garages and Waste Transfer Station
- Includes landfill related infrastructure and facilities





# THE CITY MAP TODAY

462 acres of currently mapped parkland on the site\*

Unbuilt “paper”\* and “record” streets on the site

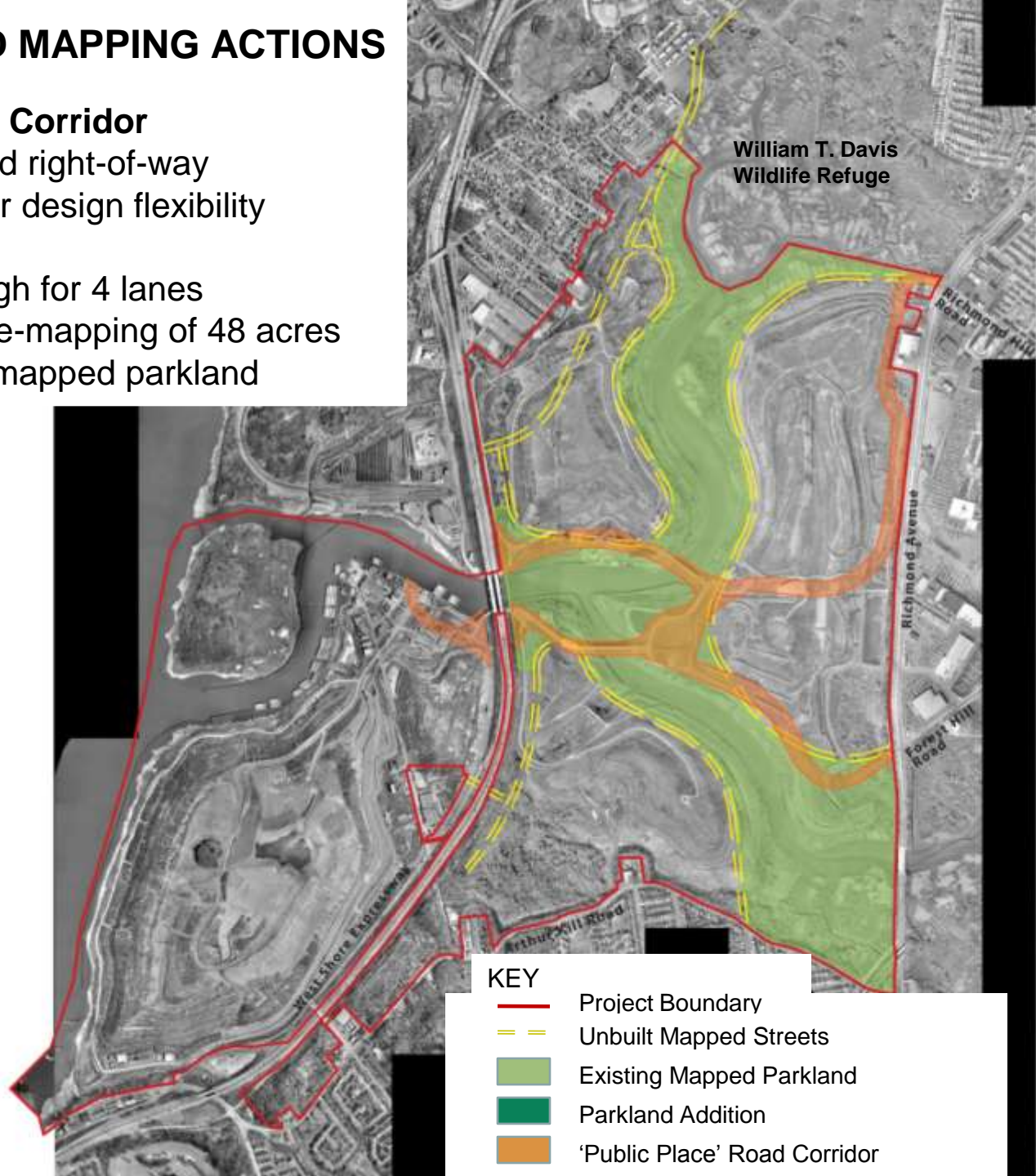
*\*pursuant to Robert Moses’ plan for Fresh Kills*



# PROPOSED MAPPING ACTIONS

## Public Place Corridor

- Acts as road right-of-way
- Provides for design flexibility
- Alienable
- Wide enough for 4 lanes
- Requires de-mapping of 48 acres of existing mapped parkland



KEY	
	Project Boundary
	Unbuilt Mapped Streets
	Existing Mapped Parkland
	Parkland Addition
	'Public Place' Road Corridor



# PROPOSED MAPPING ACTIONS

## Public Place Corridor

### Eliminating Unbuilt Paper Streets

- Over sensitive landfill infrastructure and tidal wetlands
- Do not correspond with proposed routing

### Extinguishing Unbuilt Record Streets

- Street-ends to become part of park



# PROPOSED MAPPING ACTIONS

## Public Place Corridor

- Eliminating Unbuilt Paper Streets
- Extinguishing Unbuilt Record Streets

## Parkland Addition

- Adds approximately 1,453 acres
- Total parkland: 1,915 acres
- Note on Map indicating compatibility with landfill monitoring and maintenance



William T. Davis  
Wildlife Refuge

Richmond Hill  
Road

Richmond Avenue

Forest Hill  
Road

West Shore Expressway

### KEY

- Project Boundary
- - - Unbuilt Mapped Streets
- Existing Mapped Parkland
- Parkland Addition
- 'Public Place' Road Corridor

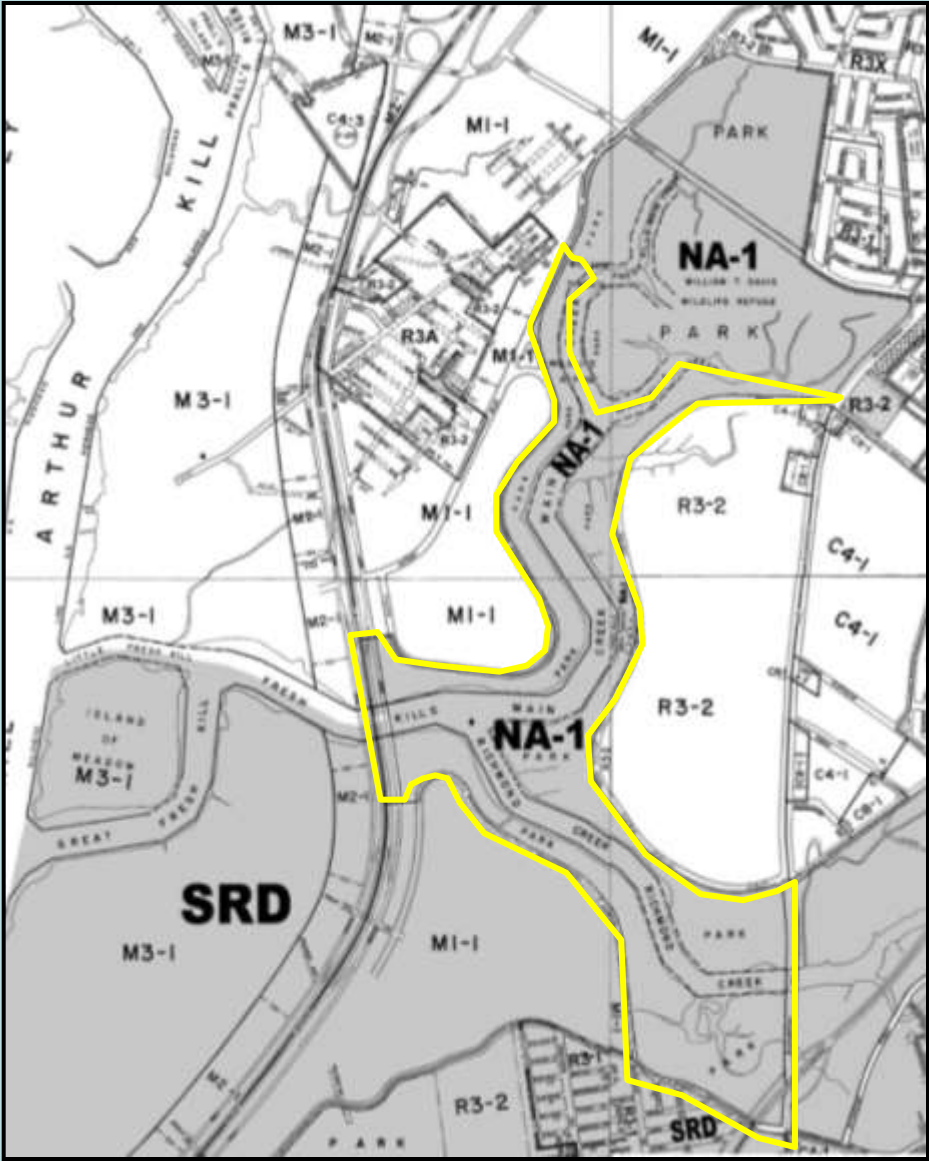


# FRESH KILLS PARK PROPOSED ZONING MAP CHANGE

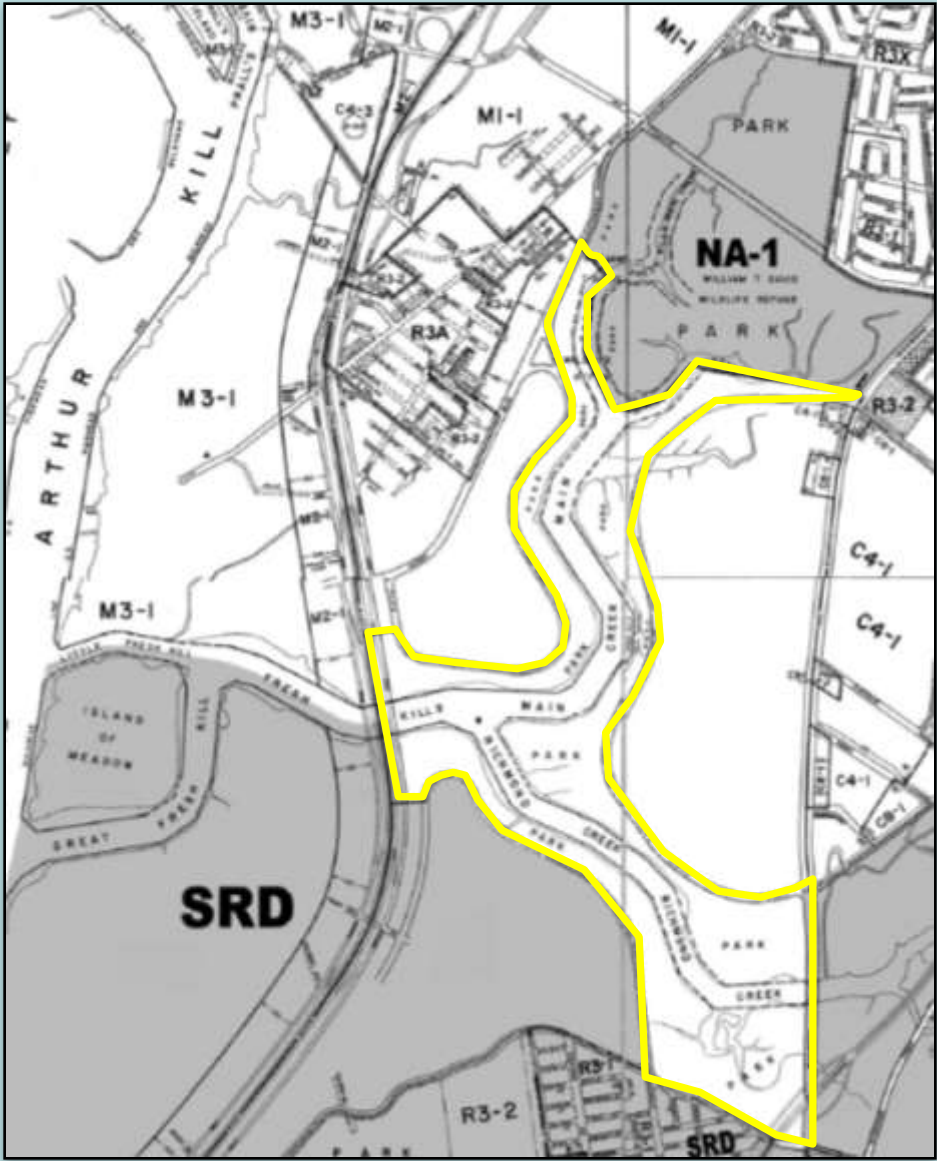
- Public parks not subject to zoning except for Special Natural Area Districts
- Alteration of Special Natural Districts requires additional CPC approval
- Removal of NA-1 to facilitate the implementation of the Fresh Kills Park Draft Master Plan, 2006
- Retention of NA-1 on adjacent William T. Davis Wildlife Refuge

# FRESH KILLS PARK

## Existing Zoning



## Proposed Zoning





# FRESH KILLS PARK PROPOSED ZONING TEXT CHANGE

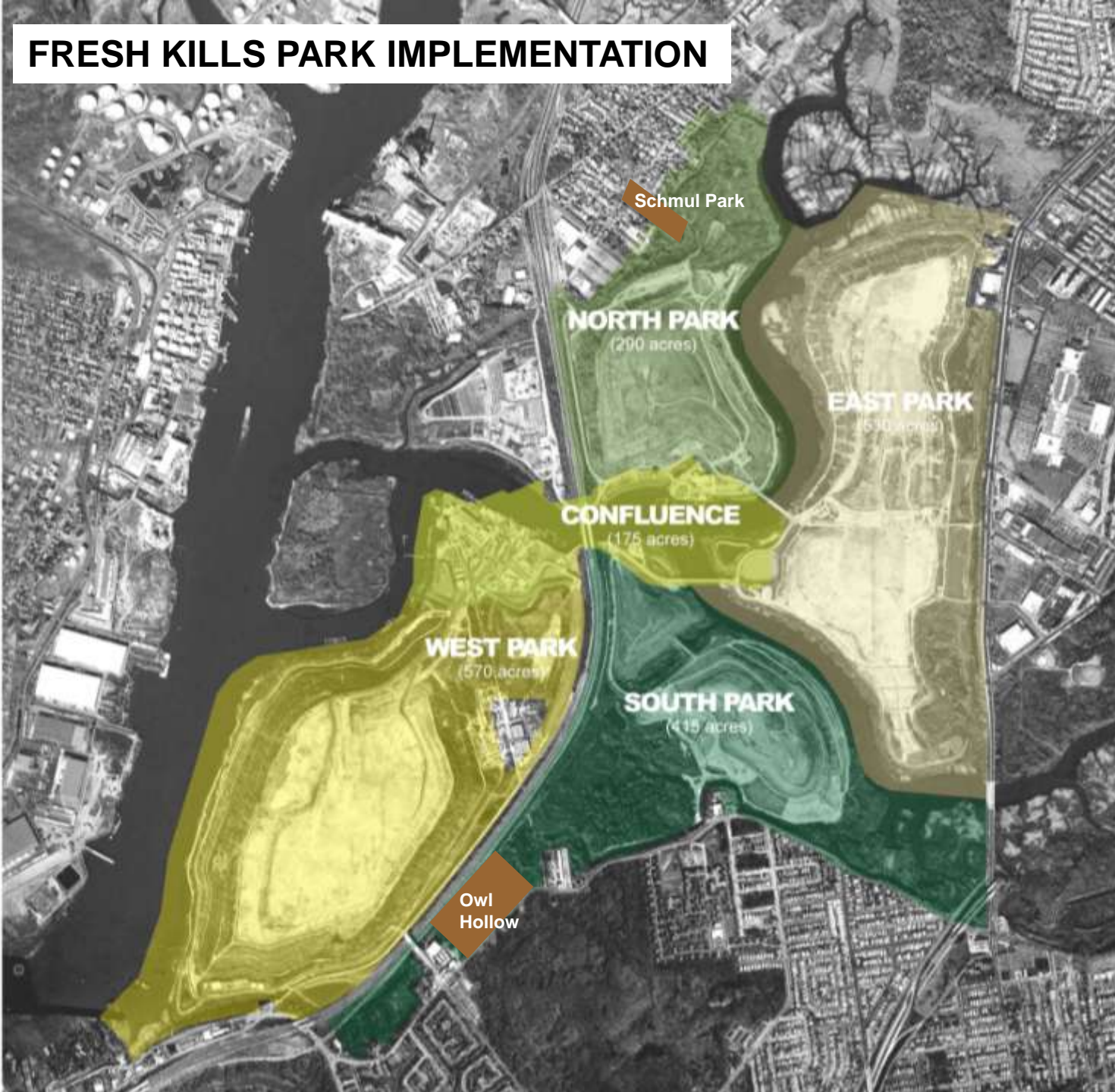
105-941

## **Special Natural Area District-1: Emerson Hill, Dongan Hills, Todt Hill, Lighthouse Hill and the Central Wetlands Area of Staten Island**

The central, serpentine, hilly spine of Staten Island is composed of Emerson Hill, Dongan Hills, Todt Hill and Lighthouse Hill. These hills are richly endowed with steep slopes, rock outcrops, erratic boulders and ponds, lakes, swamps, creeks and many trees of the glaciated Oak-Chestnut association.

To the south and west of the serpentine hills are tidal wetlands, a habitat for marine life and water fowl. The wetlands include parts of Latourette Park, ~~Fresh Kills Park~~ the William T. Davis Wildlife Refuge and New Springville Park. The high and low wetlands of Latourette Park, the William T. Davis Wildlife Refuge and New Springville Park ~~and most of the low wetlands of Fresh Kills Park~~ remain in their natural state. The purpose of this #Special Natural Area District# is to preserve and protect the aforementioned #natural features# pursuant to the provisions of this Chapter.

# FRESH KILLS PARK IMPLEMENTATION



# TWO EARLY NEIGHBORHOOD PROJECTS

Begin construction  
late-2008



# SCHMUL PARK RENOVATION

Entrance to  
North Park

# OWL HOLLOW SOCCER FIELDS & COMFORT STATION

Border of South Park





# PHASING PLAN

— Fresh Kills Park Boundary

2010 (65 acres)

2011 - 2012 (120 acres)

2013 (60 acres)

2014 - 2015 (240 acres)

2016 (110 acres)





# NORTH PARK ARC PATH





# NORTH PARK PICNIC LAWN AND SEED FARM





# NORTH PARK BIRD OBSERVATION TOWER



## CANOEING AND KAYAKING





## ECO-EDUCATION





# SOUTH PARK HILLTOP OVERLOOKS



## DESIGNATED CYCLING PATHS





## CROSS COUNTRY JOGGING AND RACES





## RIDING TRAIL





# HIKING





# FRESH KILLS PARK PROJECT

## MISSION

- Transform the site into a public park that is safe, beautiful and accessible
- Promote responsible and innovative strategies for environmental sustainability through demonstration, instruction and collaborative investigation
  - Provide amenities and attractions that both distinguish the park and draw local, regional and international visitors
  - Reconnect the site to its natural history, local ecosystems and neighboring communities

