

APPENDIX G
NOISE

Project Name	Fresh Kills	Date	10/23/07
Location	Service Road @ Muldoon Avenue	# Site	1
Equipment	B4K 2260 Observer	Observer:	Jon

Plan View

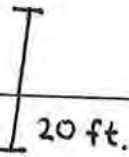
HIGHWAY (West Shore Expressway)

VEGETATION

1 LANE



SERVICE ROAD



MULDOON AVENUE

GRASS



Period	AM	76	# Automobile	7	# Medium Truck	11	# Heavy Truck
Time	9:14:39	3	# Bus	0	# Motorcycle	0	# Airplane/ Train
L1	80.5	L50	67.7	Lmin	59.1	Leq	71.2
L10	74.5	L90	63.5	Lmax	86.9	Lpeak	

Period	MD	194	# Automobile	4	# Medium Truck	19	# Heavy Truck
Time	13:57:28	3	# Bus	0	# Motorcycle	0	# Airplane/ Train
L1	79.0	L50	70.9	Lmin	63.3	Leq	72.4
L10	75.5	L90	66.2	Lmax	84.9	Lpeak	

Period	PM	230	# Automobile	2	# Medium Truck	1	# Heavy Truck
Time	16:56:43	0	# Bus	0	# Motorcycle	0	# Airplane/ Train
L1	77.6	L50	70.8	Lmin	62.0	Leq	71.9
L10	75.1	L90	65.4	Lmax	80.9	Lpeak	

Period			# Automobile		# Medium Truck		# Heavy Truck
Time			# Bus		# Motorcycle		# Airplane/ Train
L1		L50		Lmin		Leq	
L10		L90		Lmax		Lpeak	

File 0003

File 0004

File 0007

FIELD NOISE MONITORING DATA SHEET
AKRF Inc.

Project Name	Fresh kills	Date	11/3/07
Location	Service Road @ Muldoon Avenue	# Site	1
Equipment	B&K 2260 Observer	Observer:	Jon

Plan View

Site 1
SATURDAY

Period	MD	137	# Automobile	2	# Medium Truck	0	# Heavy Truck
Time	12:50 PM	1	# Bus	0	# Motorcycle	0	# Airplane/ Train
L1	77.9	L50	68.2	Lmin	59.7	Leq	71.1
L10	75.2	L90	64.3	Lmax	80.3	Lpeak	
Note:							

Period	PM	247	# Automobile	0	# Medium Truck	0	# Heavy Truck
Time	15:44:03	0	# Bus	0	# Motorcycle	0	# Airplane/ Train
L1	78.6	L50	70.7	Lmin	61.3	Leq	72.3
L10	75.8	L90	64.5	Lmax	82.4	Lpeak	
Note:							

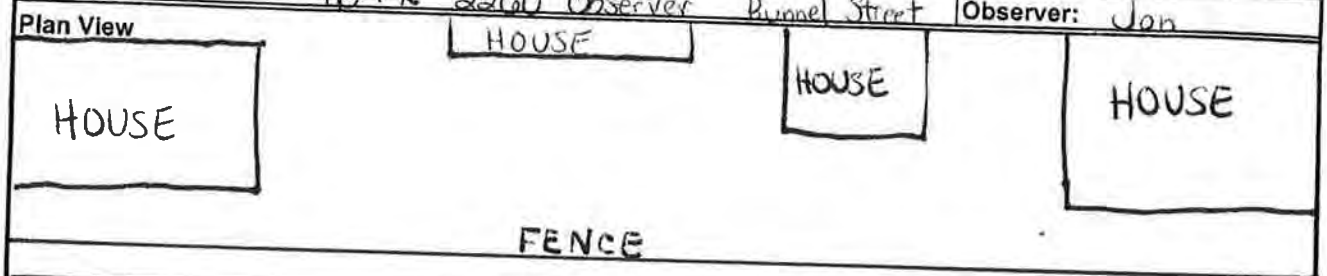
Period			# Automobile		# Medium Truck		# Heavy Truck
Time			# Bus		# Motorcycle		# Airplane/ Train
L1		L50		Lmin		Leq	
L10		L90		Lmax		Lpeak	
Note:							

Period			# Automobile		# Medium Truck		# Heavy Truck
Time			# Bus		# Motorcycle		# Airplane/ Train
L1		L50		Lmin		Leq	
L10		L90		Lmax		Lpeak	
Note:							

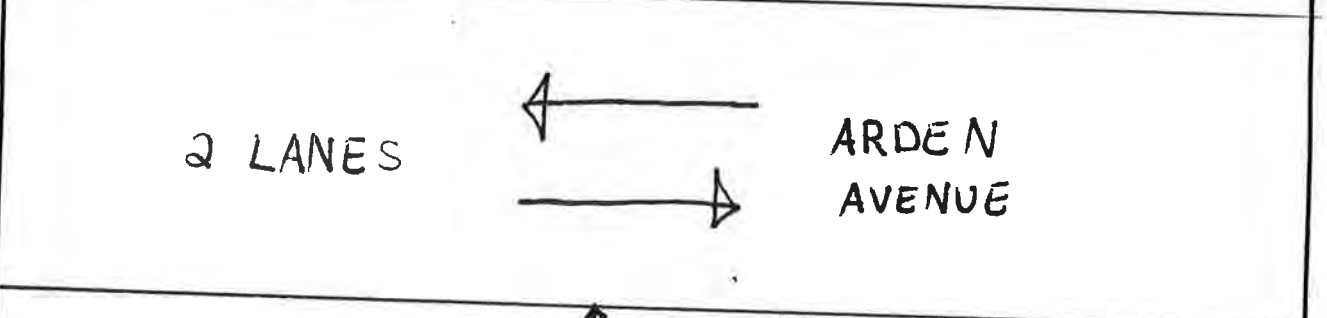
File
0001

File
0004

Project Name	Fresh Kills	Date	10/23/07
Location	Arden Avenue b/w Forest Green &	# Site	2
Equipment	B&K 2260 Observer Bunnel Street	Observer:	Jon



PARKING



⊗ ↓ 4ft.

VEGETATION (Arden Heights Woods Park)

Period	AM	328	# Automobile	7	# Medium Truck	5	# Heavy Truck
Time	8:01:13	21	# Bus	0	# Motorcycle	0	# Airplane/ Train
L1	83.1	L50	70.6	Lmin	51.7	Leq	73.6
L10	77.1	L90	59.4	Lmax	89.2	Lpeak	
Note:							

Period	MD	326	# Automobile	1	# Medium Truck	2	# Heavy Truck
Time	15:02:36	21	# Bus	0	# Motorcycle	0	# Airplane/ Train
L1	82.0	L50	70.2	Lmin	51.7	Leq	72.6
L10	75.8	L90	59.9	Lmax	86.9	Lpeak	
Note:							

Period	PM	328	# Automobile	3	# Medium Truck	2	# Heavy Truck
Time	17:59:28	4	# Bus	0	# Motorcycle	0	# Airplane/ Train
L1	79.8	L50	69.5	Lmin	48.9	Leq	72.2
L10	76.1	L90	58.7	Lmax	86.3	Lpeak	
Note:							

Period			# Automobile		# Medium Truck		# Heavy Truck
Time			# Bus		# Motorcycle		# Airplane/ Train
L1		L50		Lmin		Leq	
L10		L90		Lmax		Lpeak	
Note:							

N ↘

File 0001

File 0006

File 0009

FIELD NOISE MONITORING DATA SHEET
AKRF Inc.

Project Name	Fresh Kills	Date	11/3/07
Location	Acden Avenue b/w Forest Green +	# Site	2
Equipment	B+K 2260 Observer Buanel Street	Observer:	Jon

Plan View

Site 2
SATURDAY

Period	MD	283	# Automobile	3	# Medium Truck	0	# Heavy Truck
Time	13:18:53	1	# Bus	0	# Motorcycle	0	# Airplane/ Train
L1	80.3	L50	70.3	Lmin	52.2	Leq	70.8
L10	76.4	L90	58.0	Lmax	89.9	Lpeak	
Note:							

Period	PM	297	# Automobile	4	# Medium Truck	0	# Heavy Truck
Time	16:10:59	1	# Bus	0	# Motorcycle	0	# Airplane/ Train
L1	79.8	L50	71.3	Lmin	52.8	Leq	72.8
L10	76.5	L90	60.3	Lmax	84.8	Lpeak	
Note:							

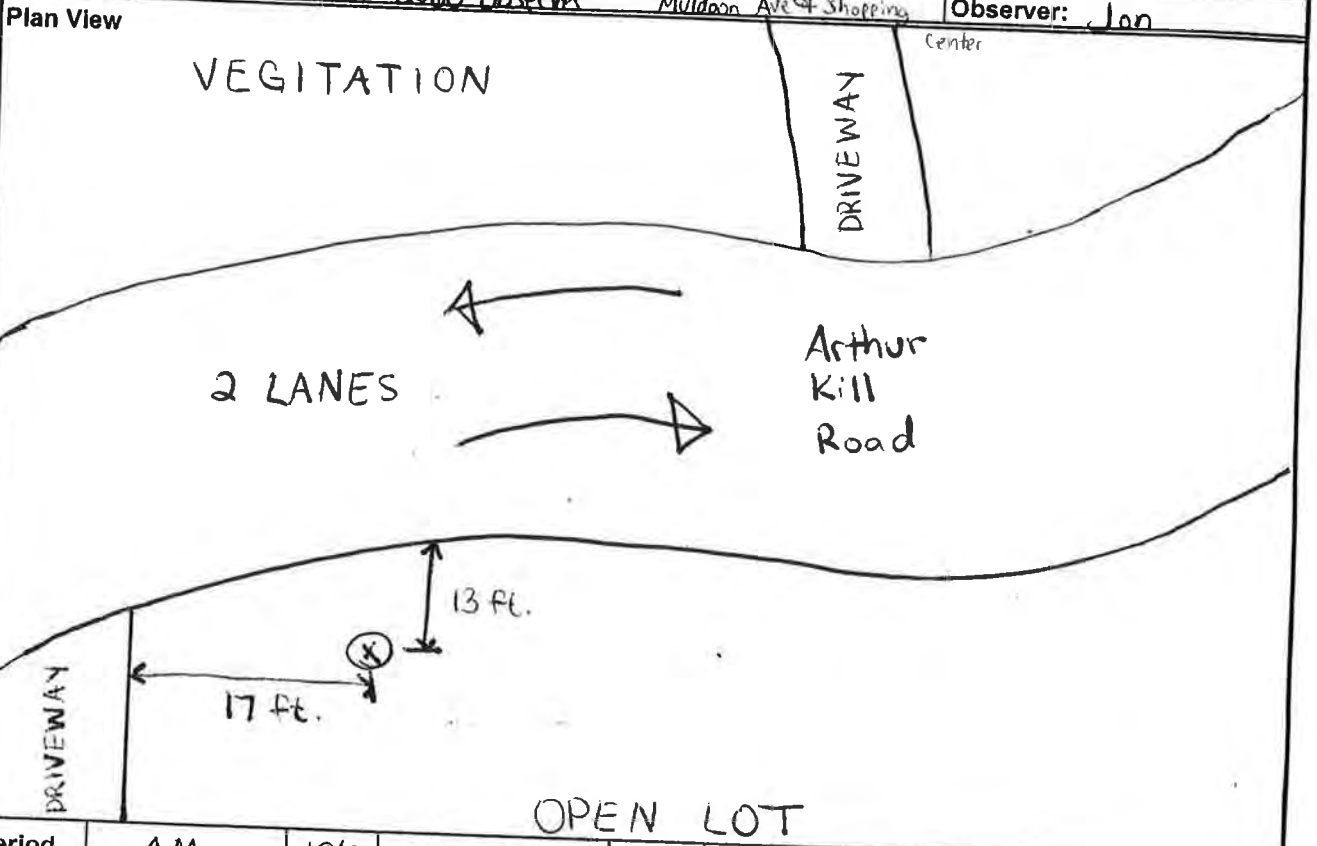
Period			# Automobile		# Medium Truck		# Heavy Truck
Time			# Bus		# Motorcycle		# Airplane/ Train
L1		L50		Lmin		Leq	
L10		L90		Lmax		Lpeak	
Note:							

Period			# Automobile		# Medium Truck		# Heavy Truck
Time			# Bus		# Motorcycle		# Airplane/ Train
L1		L50		Lmin		Leq	
L10		L90		Lmax		Lpeak	
Note:							

File
0002

File
0005

Project Name	Fresh Kills	Date	10/23/07
Location	Arthur Kill Rd. East of Muldoon Ave b/w	# Site	3
Equipment	B+k 2260 Observer	Observer:	Jon



File
0002

Period	AM	196	# Automobile	15	# Medium Truck	7	# Heavy Truck
Time	8:35:09	15	# Bus	0	# Motorcycle	0	# Airplane/ Train
L1	82.5	L50	68.3	Lmin	51.9	Leq	72.6
L10	76.0	L90	57.8	Lmax	90.5	Lpeak	
Note:							

File
0005

Period	MD	218	# Automobile	7	# Medium Truck	6	# Heavy Truck
Time	14:27:02	21	# Bus	0	# Motorcycle	0	# Airplane/ Train
L1	80.2	L50	68.5	Lmin	53.1	Leq	71.1
L10	74.7	L90	59.8	Lmax	83.9	Lpeak	
Note:							

File
0008

Period	PM	293	# Automobile	3	# Medium Truck	2	# Heavy Truck
Time	17:27:15	2	# Bus	0	# Motorcycle	0	# Airplane/ Train
L1	76.8	L50	68.9	Lmin	51.8	Leq	70.5
L10	73.8	L90	59.7	Lmax	87.5	Lpeak	
Note:							

Period			# Automobile		# Medium Truck		# Heavy Truck
Time			# Bus		# Motorcycle		# Airplane/ Train
L1		L50		Lmin		Leq	
L10		L90		Lmax		Lpeak	
Note:							

FIELD NOISE MONITORING DATA SHEET
AKRF Inc.

Project Name	Fresh Kills	Date	11/3/07
Location	Arthur Kill Rd. east of Muldoon Ave b/w Muldoon	# Site	3
Equipment	BY K 2260 Observer Ave + Shopping Center	Observer:	Jon

Plan View

Site 3
SATURDAY

File
0003

Period	MD	295	# Automobile	3	# Medium Truck	1	# Heavy Truck
Time	13:46:56	3	# Bus	0	# Motorcycle	0	# Airplane/ Train
L1	77.4	L50	68.8	Lmin	56.4	Leq	70.3
L10	73.4	L90	59.8	Lmax	85.3	Lpeak	
Note:							

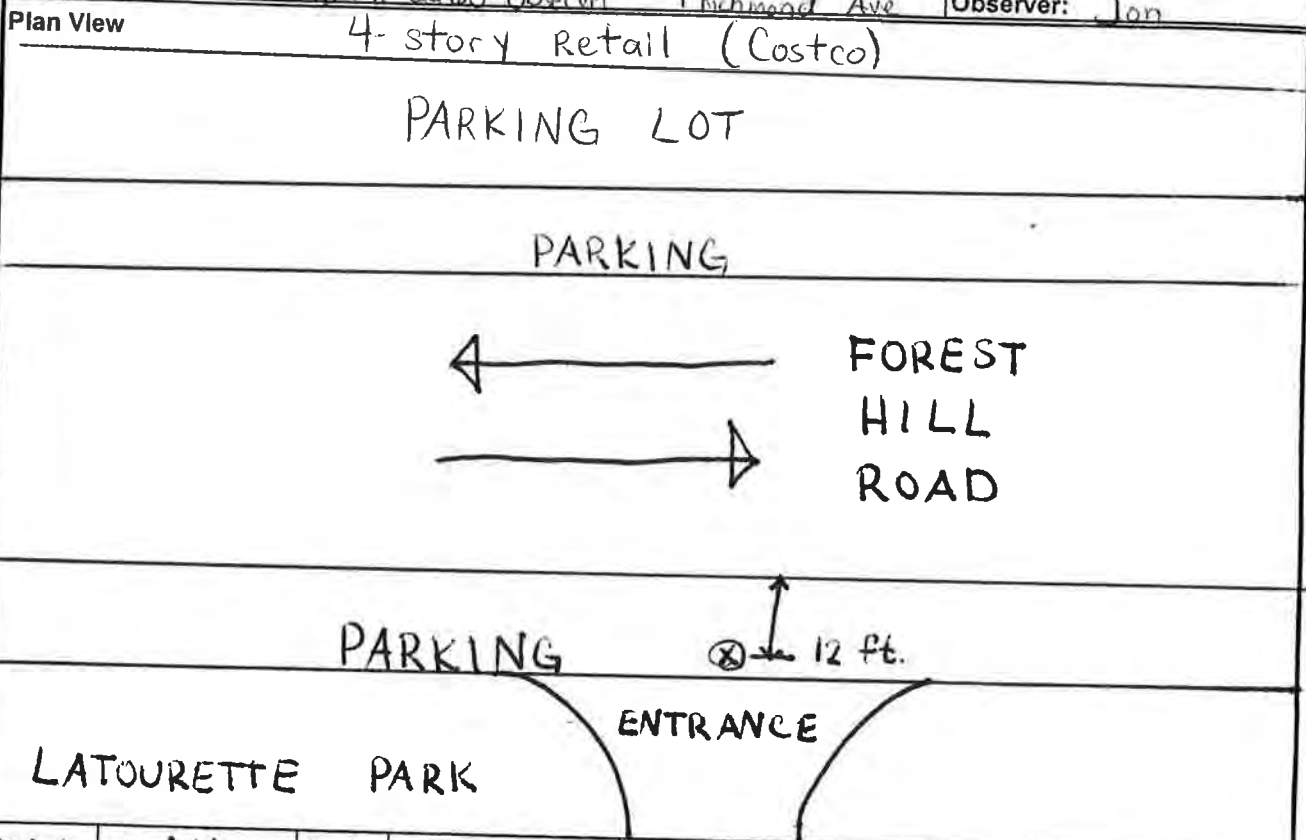
File
0006

Period	PM	310	# Automobile	2	# Medium Truck	2	# Heavy Truck
Time	16:35:47	3	# Bus	0	# Motorcycle	0	# Airplane/ Train
L1	76.9	L50	68.3	Lmin	55.3	Leq	69.7
L10	72.8	L90	58.7	Lmax	83.0	Lpeak	
Note:							

Period			# Automobile		# Medium Truck		# Heavy Truck
Time			# Bus		# Motorcycle		# Airplane/ Train
L1		L50		Lmin		Leq	
L10		L90		Lmax		Lpeak	
Note:							

Period			# Automobile		# Medium Truck		# Heavy Truck
Time			# Bus		# Motorcycle		# Airplane/ Train
L1		L50		Lmin		Leq	
L10		L90		Lmax		Lpeak	
Note:							

Project Name	Fresh Kills	Date	10/31/07
Location	Forest Hill Rd. b/w Independence Ave	# Site	4
Equipment	B+k 2260 Observer + Richmond Ave	Observer:	Jon



File
0001

Period	AM	306	# Automobile	2	# Medium Truck	0	# Heavy Truck
Time	8:18:54	17	# Bus	0	# Motorcycle	0	# Airplane/ Train
L1	79.3	L50	70.0	Lmin	54.5	Leq	71.7
L10	75.1	L90	59.5	Lmax	84.9	Lpeak	
Note:							

File
0004

Period	MD	356	# Automobile	3	# Medium Truck	1	# Heavy Truck
Time	13:58:44	18	# Bus	0	# Motorcycle	0	# Airplane/ Train
L1	79.7	L50	69.1	Lmin	52.7	Leq	71.3
L10	74.7	L90	58.1	Lmax	86.3	Lpeak	
Note:							

File
0007

Period	PM	351	# Automobile	2	# Medium Truck	2	# Heavy Truck
Time	15:59:26	17	# Bus	0	# Motorcycle	0	# Airplane/ Train
L1	80.5	L50	69.0	Lmin	50.4	Leq	71.7
L10	75.1	L90	58.2	Lmax	86.6	Lpeak	
Note:							

Period			# Automobile		# Medium Truck		# Heavy Truck
Time			# Bus		# Motorcycle		# Airplane/ Train
L1		L50		Lmin		Leq	
L10		L90		Lmax		Lpeak	
Note:							

FIELD NOISE MONITORING DATA SHEET
AKRF Inc.

Project Name	Fresh Kills	Date	11/3/07
Location	Forest Hill Rd b/w Independence Ave	# Site	4
Equipment	BYK 2260 Observer 4 Richmond Ave	Observer:	Dean

Plan View

Site 4
SATURDAY

File
0001

Period	MD	280	# Automobile	1	# Medium Truck	0	# Heavy Truck
Time	12:45 PM	7	# Bus	0	# Motorcycle	0	# Airplane/ Train
L1	77.8	L50	67.9	Lmin	53.8	Leq	70.1
L10	73.9	L90	60.3	Lmax	81.9	Lpeak	
Note:							

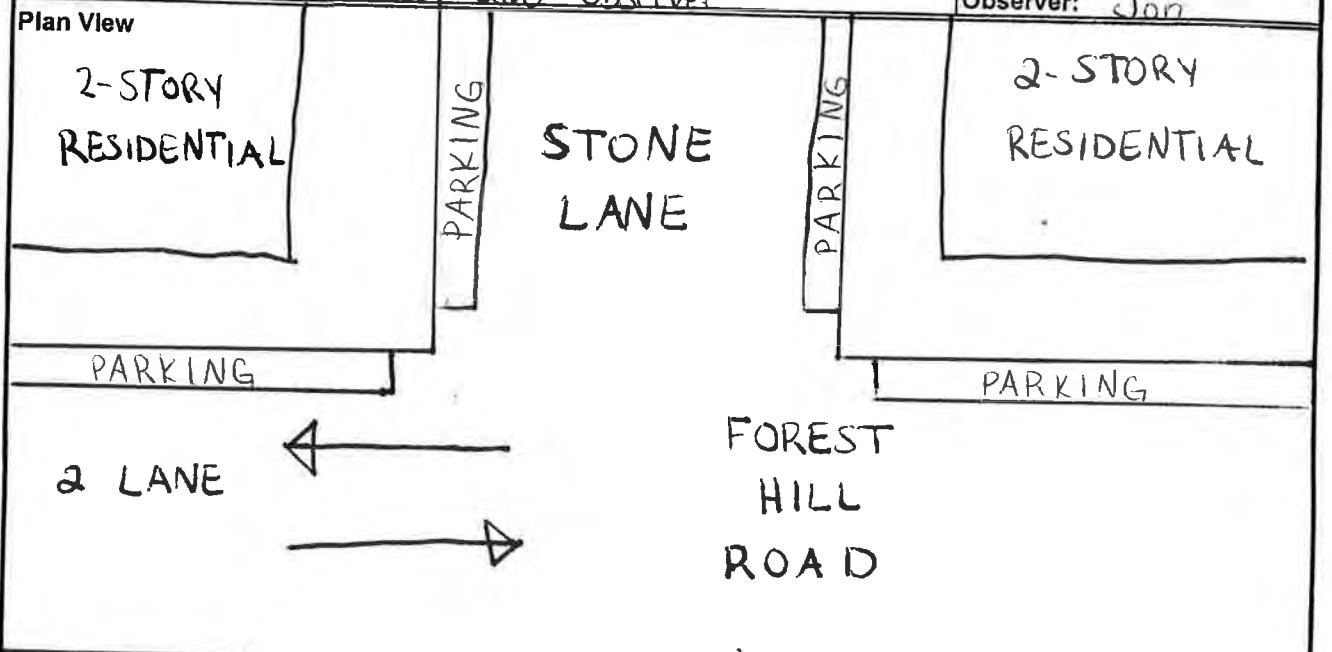
File
0004

Period	PM	327	# Automobile	1	# Medium Truck	0	# Heavy Truck
Time	3:42 PM	7	# Bus	0	# Motorcycle	0	# Airplane/ Train
L1	75.9	L50	68.0	Lmin	52.3	Leq	69.2
L10	72.3	L90	59.2	Lmax	82.4	Lpeak	
Note:							

Period			# Automobile		# Medium Truck		# Heavy Truck
Time			# Bus		# Motorcycle		# Airplane/ Train
L1		L50		Lmin		Leq	
L10		L90		Lmax		Lpeak	
Note:							

Period			# Automobile		# Medium Truck		# Heavy Truck
Time			# Bus		# Motorcycle		# Airplane/ Train
L1		L50		Lmin		Leq	
L10		L90		Lmax		Lpeak	
Note:							

Project Name	Fresh Kills	Date	10/31/07
Location	Forest Hill Road @ Stone Lane	# Site	5
Equipment	B&K 2260 Observer	Observer:	Jon



LATOURETTE Park

Period	AM	275	# Automobile	5	# Medium Truck	0	# Heavy Truck
Time	8:41:41	6	# Bus	0	# Motorcycle	0	# Airplane/ Train
L1	81.2	L50	71.8	Lmin	53.9	Leq	73.8
L10	77.7	L90	59.5	Lmax	84.1	Lpeak	

Period	MD	405	# Automobile	1	# Medium Truck	0	# Heavy Truck
Time	14:28:34	3	# Bus	0	# Motorcycle	0	# Airplane/ Train
L1	80.2	L50	70.9	Lmin	53.0	Leq	74.1
L10	77.6	L90	63.1	Lmax	89.3	Lpeak	

Period	PM	377	# Automobile	1	# Medium Truck	0	# Heavy Truck
Time	16:28:07	0	# Bus	0	# Motorcycle	0	# Airplane/ Train
L1	80.1	L50	72.4	Lmin	53.9	Leq	73.6
L10	77.1	L90	61.6	Lmax	82.9	Lpeak	

Period			# Automobile		# Medium Truck		# Heavy Truck
Time			# Bus		# Motorcycle		# Airplane/ Train
L1		L50		Lmin		Leq	
L10		L90		Lmax		Lpeak	

File
0002

File
0005

File
0008

FIELD NOISE MONITORING DATA SHEET
AKRF Inc.

Project Name	Fresh Kills	Date	11/3/07
Location	Forest Hill Road @ Stone Lane	# Site	5
Equipment	BSK 2260 Observer	Observer:	Dan

Plan View

Site 5

SATURDAY

File
0002

Period	MD	437	# Automobile	4	# Medium Truck	0	# Heavy Truck
Time	1:13 PM	0	# Bus	0	# Motorcycle	0	# Airplane/ Train
L1	79.2	L50	72.9	Lmin	55.7	Leq	73.7
L10	76.9	L90	64.2	Lmax	81.9	Lpeak	
Note:							

File
0005

Period	PM	584	# Automobile	1	# Medium Truck	0	# Heavy Truck
Time	4:09 PM	1	# Bus	0	# Motorcycle	0	# Airplane/ Train
L1	78.6	L50	71.2	Lmin	52.0	Leq	72.3
L10	75.9	L90	58.2	Lmax	82.3	Lpeak	
Note:							

Period			# Automobile		# Medium Truck		# Heavy Truck
Time			# Bus		# Motorcycle		# Airplane/ Train
L1		L50		Lmin		Leq	
L10		L90		Lmax		Lpeak	
Note:							

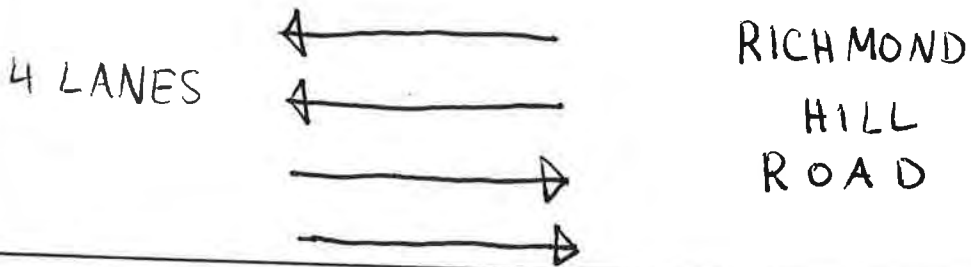
Period			# Automobile		# Medium Truck		# Heavy Truck
Time			# Bus		# Motorcycle		# Airplane/ Train
L1		L50		Lmin		Leq	
L10		L90		Lmax		Lpeak	
Note:							

Project Name	Fresh Kills	Date	10/31/07
Location	Richmond Hill Rd. b/w Mercy Mount St.	# Site	6
Equipment	B+K 2260 Observer + Rascal Court	Observer:	Jon

Plan View

3-STORY RESIDENTIAL

PARKING



PARKING

⊗ 6 ft.

4-STORY RESIDENTIAL

File
0003

Period	AM	201	# Automobile	2	# Medium Truck	5	# Heavy Truck
Time	9:12:59	11	# Bus	0	# Motorcycle	0	# Airplane/ Train
L1	80.3	L50	62.8	Lmin	50.4	Leq	69.7
L10	73.5	L90	54.0	Lmax	86.1	Lpeak	

File
0006

Period	MD	315	# Automobile	5	# Medium Truck	1	# Heavy Truck
Time	3:13 PM	11	# Bus	0	# Motorcycle	0	# Airplane/ Train
L1	79.7	L50	65.4	Lmin	50.0	Leq	69.9
L10	73.3	L90	57.6	Lmax	87.0	Lpeak	

File
0009

Period	PM	297	# Automobile	1	# Medium Truck	0	# Heavy Truck
Time	17:08:30	11	# Bus	0	# Motorcycle	0	# Airplane/ Train
L1	83.2	L50	63.5	Lmin	47.6	Leq	71.7
L10	73.7	L90	54.0	Lmax	93.4	Lpeak	

Period			# Automobile		# Medium Truck		# Heavy Truck
Time			# Bus		# Motorcycle		# Airplane/ Train
L1		L50		Lmin		Leq	
L10		L90		Lmax		Lpeak	

FIELD NOISE MONITORING DATA SHEET
AKRF Inc.

Project Name	Fresh Kills	Date	11/3/07
Location	Richmond Hill Rd blw Messy Mount St	# Site	6
Equipment	69 K 2260 Observer → Rural Court	Observer:	Dan

Plan View

Site 6
SATURDAY

Period	MD	373	# Automobile	2	# Medium Truck	0	# Heavy Truck
Time	1:48 PM	6	# Bus	0	# Motorcycle	0	# Airplane/ Train
L1	76.9	L50	64.7	Lmin	53.1	Leq	67.8
L10	71.4	L90	58.5	Lmax	81.5	Lpeak	
Note:							

Period	PM	336	# Automobile	2	# Medium Truck	0	# Heavy Truck
Time	4:40 PM	6	# Bus	0	# Motorcycle	0	# Airplane/ Train
L1	77.4	L50	62.3	Lmin	51.0	Leq	66.2
L10	68.9	L90	55.7	Lmax	82.9	Lpeak	
Note:							

Period			# Automobile		# Medium Truck		# Heavy Truck
Time			# Bus		# Motorcycle		# Airplane/ Train
L1		L50		Lmin		Leq	
L10		L90		Lmax		Lpeak	
Note:							

Period			# Automobile		# Medium Truck		# Heavy Truck
Time			# Bus		# Motorcycle		# Airplane/ Train
L1		L50		Lmin		Leq	
L10		L90		Lmax		Lpeak	
Note:							

File 0003

File 0006

Project Name		Fresh Kills Park				Date	11/27/07		
Location		Victory Blvd. btw. Melvin & Wild Ave.				# Site	7		
Equipment		BTK 2260				Observer: Mark A.			
Plan View									
Period		AM		254	# Automobile	11	# Medium Truck	9	# Heavy Truck
Time		07:29:14		9	# Bus		# Motorcycle		# Airplane/ Train
L1	75.9	L50	62.8	Lmin	54.2	Leq	66.4		
L10	70.1	L90	57.9	Lmax	80.2	Lpeak			
Note:									
Period		MD		271	# Automobile	6	# Medium Truck	10	# Heavy Truck
Time		14:27:29		6	# Bus		# Motorcycle		# Airplane/ Train
L1	73.5	L50	59.5	Lmin	51.9	Leq	63.4		
L10	65.9	L90	55.1	Lmax	82.5	Lpeak			
Note:									
Period		PM		305	# Automobile	6	# Medium Truck	3	# Heavy Truck
Time		16:54:25		5	# Bus		# Motorcycle		# Airplane/ Train
L1	76.0	L50	63.9	Lmin	53.7	Leq	66.7		
L10	69.6	L90	57.2	Lmax	80.8	Lpeak			
Note:									
Period					# Automobile		# Medium Truck		# Heavy Truck
Time					# Bus		# Motorcycle		# Airplane/ Train
L1		L50		Lmin		Leq			
L10		L90		Lmax		Lpeak			
Note:									

File
0004

File
0008

File
0010

FIELD NOISE MONITORING DATA SHEET
AKRF Inc.

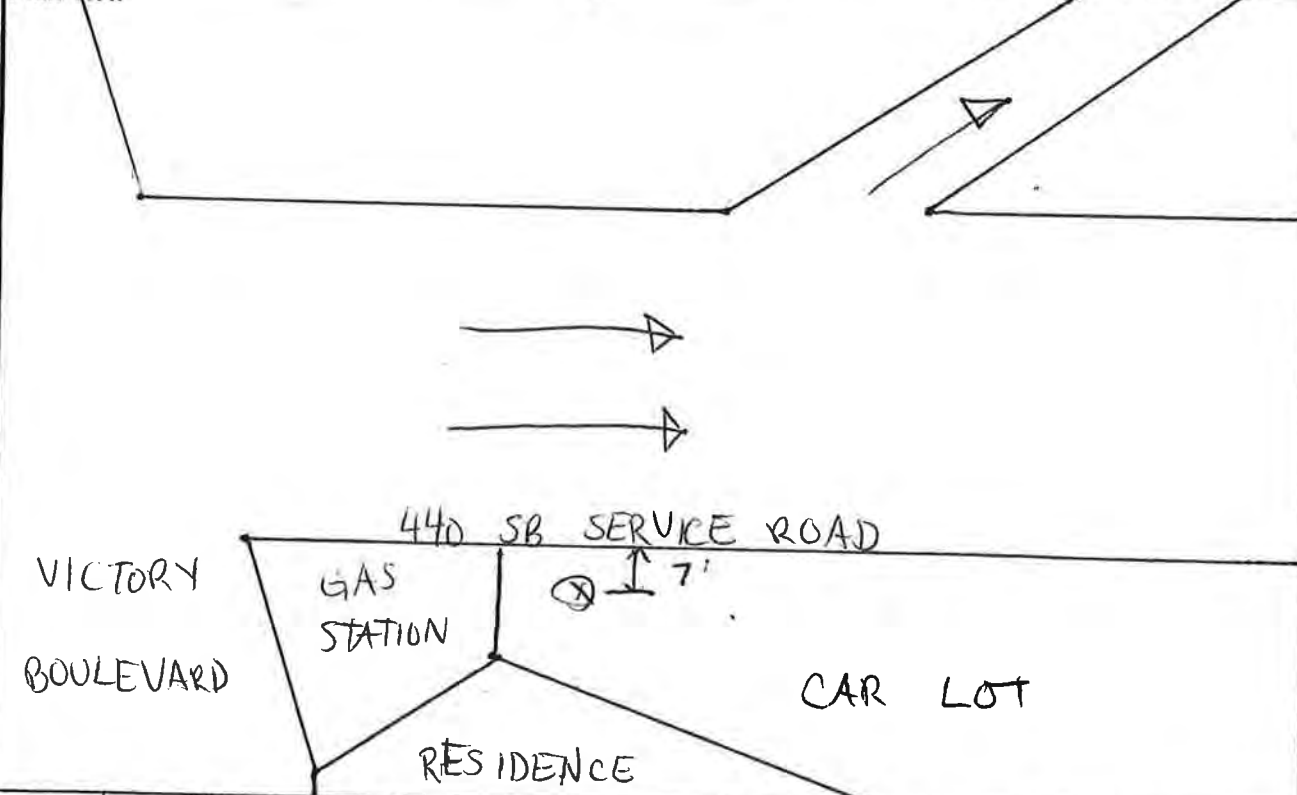
Project Name		Fresh Kills Park				Date	11/17/07	
Location		Victory Blvd. b/w Melvin & Wild Avenue				# Site	7	
Equipment		B&K 2260 Observer				Observer: Dan		
Plan View	MELVIN AVENUE	2-STORY Residential	VACANT	2-STORY Residential	WILD AVENUE			
Period	Sat MD	282	# Automobile	5	# Medium Truck	2	# Heavy Truck	
Time	1:12 PM	1	# Bus		# Motorcycle		# Airplane/ Train	
L1	80.9	L50	64.0	Lmin	50.7	Leq	70.3	
L10	73.2	L90	56.4	Lmax	91.0	Lpeak		
Note: Traffic backs up past receptor due to light								
Period	Sat PM	234	# Automobile	1	# Medium Truck		# Heavy Truck	
Time	3:56 PM	2	# Bus		# Motorcycle		# Airplane/ Train	
L1	78.3	L50	64.2	Lmin	51.8	Leq	69.0	
L10	72.1	L90	55.8	Lmax	85.5	Lpeak		
Note:								
Period			# Automobile		# Medium Truck		# Heavy Truck	
Time			# Bus		# Motorcycle		# Airplane/ Train	
L1		L50		Lmin		Leq		
L10		L90		Lmax		Lpeak		
Note:								
Period			# Automobile		# Medium Truck		# Heavy Truck	
Time			# Bus		# Motorcycle		# Airplane/ Train	
L1		L50		Lmin		Leq		
L10		L90		Lmax		Lpeak		
Note:								

File 0007

File 0016

Project Name	Fresh kills	Date	2/27/08
Location	SB Service Road	# Site	8
Equipment	AK 2260 Investigator	Observer:	Oscar

Plan View



File 0007

Period	AM	137	# Automobile	11	# Medium Truck	25	# Heavy Truck
Time	7:56 AM	2	# Bus		# Motorcycle		# Airplane/ Train
L1	85.4	L50	67.5	Lmin	60.0	Leq	73.5
L10	76.5	L90	63.5	Lmax	89.0	Lpeak	

Note:

File 0003

Period	MD	172	# Automobile	3	# Medium Truck	6	# Heavy Truck
Time	3:10 PM	7	# Bus		# Motorcycle		# Airplane/ Train
L1	79.6	L50	67.0	Lmin	61.5	Leq	70.5
L10	73.0	L90	63.1	Lmax	88.7	Lpeak	

Note:

File 0006

Period	PM	161	# Automobile	4	# Medium Truck	4	# Heavy Truck
Time	5:47 PM	5	# Bus		# Motorcycle		# Airplane/ Train
L1	76.4	L50	63.3	Lmin	56.9	Leq	67.0
L10	69.8	L90	59.8	Lmax	82.7	Lpeak	

Note:

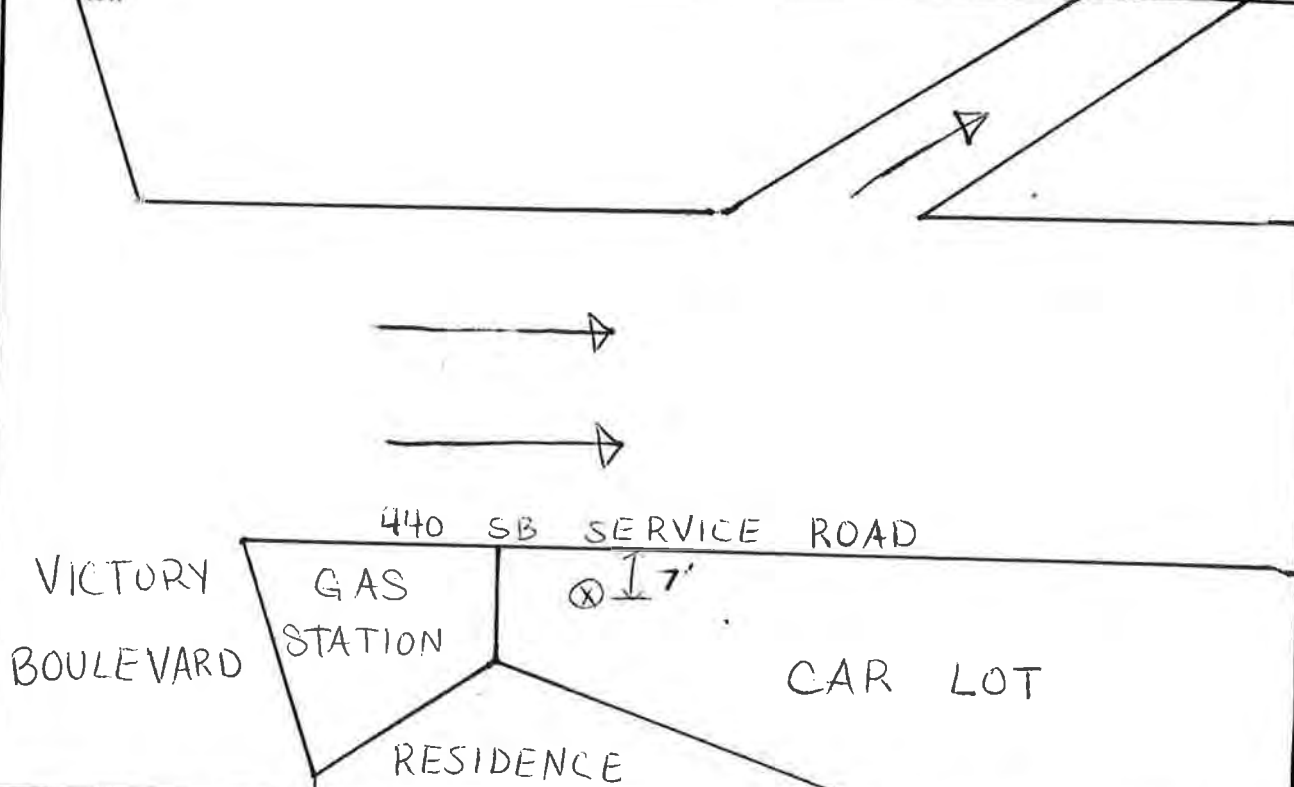
Period			# Automobile		# Medium Truck		# Heavy Truck
Time			# Bus		# Motorcycle		# Airplane/ Train
L1		L50		Lmin		Leq	
L10		L90		Lmax		Lpeak	

Note:

FIELD NOISE MONITORING DATA SHEET
AKRF Inc.

Project Name	Fresh Kills Park	Date	11/17/07
Location	440 SB Service Road @ Victory	# Site	8
Equipment	B&K 2260 Observer	Observer:	Dan

Plan View



File
0008

Period	Sat MD	143	# Automobile	2	# Medium Truck	2	# Heavy Truck
Time	1:40 PM	0	# Bus		# Motorcycle		# Airplane/ Train
L1	76.9	L50	66.7	Lmin	58.4	Leq	69.1
L10	72.0	L90	63.9	Lmax	85.3	Lpeak	
Note:							

File
0012

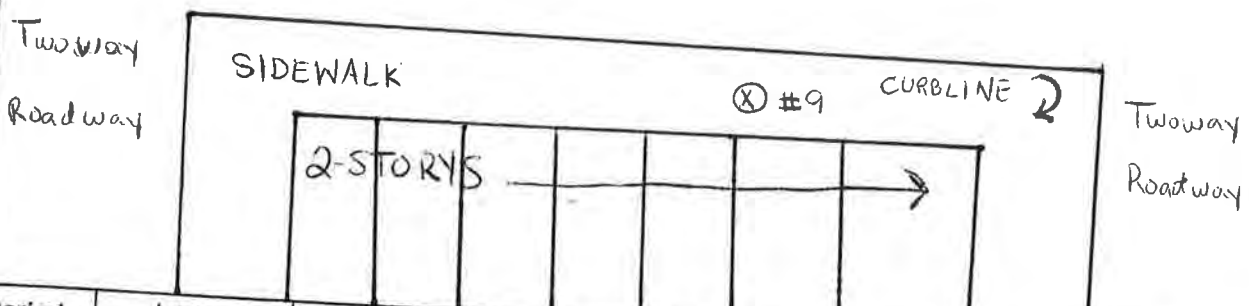
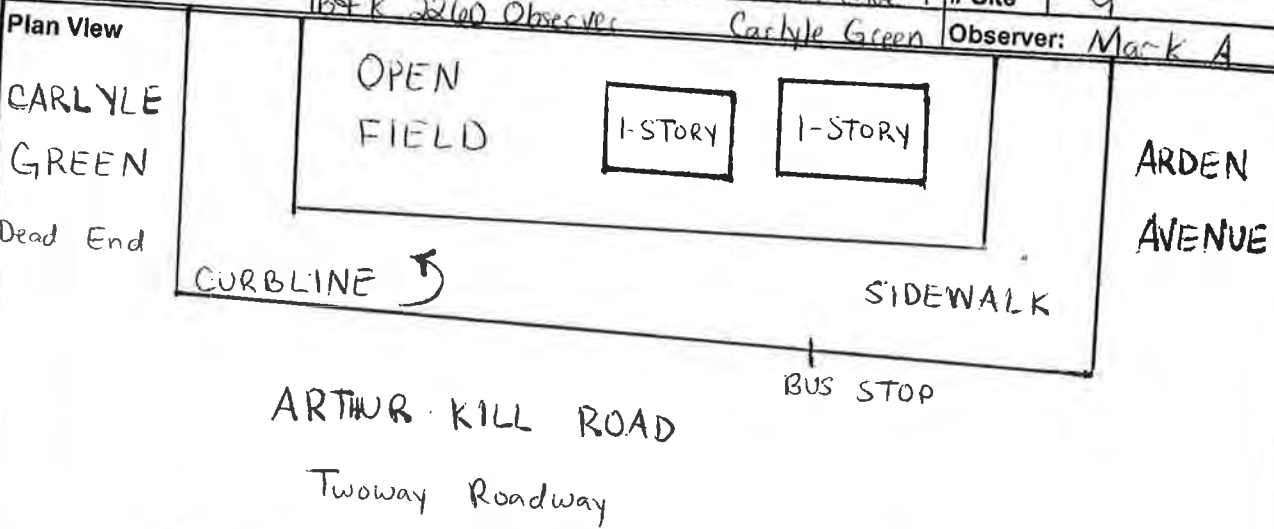
Period	Sat PM	112	# Automobile	2	# Medium Truck	3	# Heavy Truck
Time	4:57	0	# Bus		# Motorcycle		# Airplane/ Train
L1	75.6	L50	65.4	Lmin	58.9	Leq	67.5
L10	70.3	L90	62.4	Lmax	83.1	Lpeak	
Note:							

Period			# Automobile		# Medium Truck		# Heavy Truck
Time			# Bus		# Motorcycle		# Airplane/ Train
L1		L50		Lmin		Leq	
L10		L90		Lmax		Lpeak	
Note:							

Period			# Automobile		# Medium Truck		# Heavy Truck
Time			# Bus		# Motorcycle		# Airplane/ Train
L1		L50		Lmin		Leq	
L10		L90		Lmax		Lpeak	
Note:							

FIELD NOISE MONITORING DATA SHEET
AKRF Inc.

Project Name: Fresh Kills Park
 Location: Arthur Kill Rd. b/w Arden Avenue & Park 2260
 Date: 11/27/07
 Equipment: Observer: Carlyle Green
 # Site: 9
 Observer: Mark A



Period	AM	213	# Automobile	3	# Medium Truck	18	# Heavy Truck
Time	08:47:23	18	# Bus		# Motorcycle		# Airplane/ Train
L1	79.2	L50	66.3	Lmin	59.6	Leq	69.5
L10	72.4	L90	62.1	Lmax	83.0	Lpeak	
Note:							

Period	MD	229	# Automobile	7	# Medium Truck	10	# Heavy Truck
Time	11:50:32	13	# Bus		# Motorcycle		# Airplane/ Train
L1	78.7	L50	64.5	Lmin	56.2	Leq	70.1
L10	72.1	L90	59.5	Lmax	91.2	Lpeak	
Note:							

Period	PM	313	# Automobile	1	# Medium Truck	2	# Heavy Truck
Time	17:58:35	9	# Bus		# Motorcycle		# Airplane/ Train
L1	76.3	L50	65.0	Lmin	56.3	Leq	67.6
L10	70.9	L90	58.6	Lmax	83.3	Lpeak	
Note:							

Period			# Automobile		# Medium Truck		# Heavy Truck
Time			# Bus		# Motorcycle		# Airplane/ Train
L1		L50		Lmin		Leq	
L10		L90		Lmax		Lpeak	
Note:							

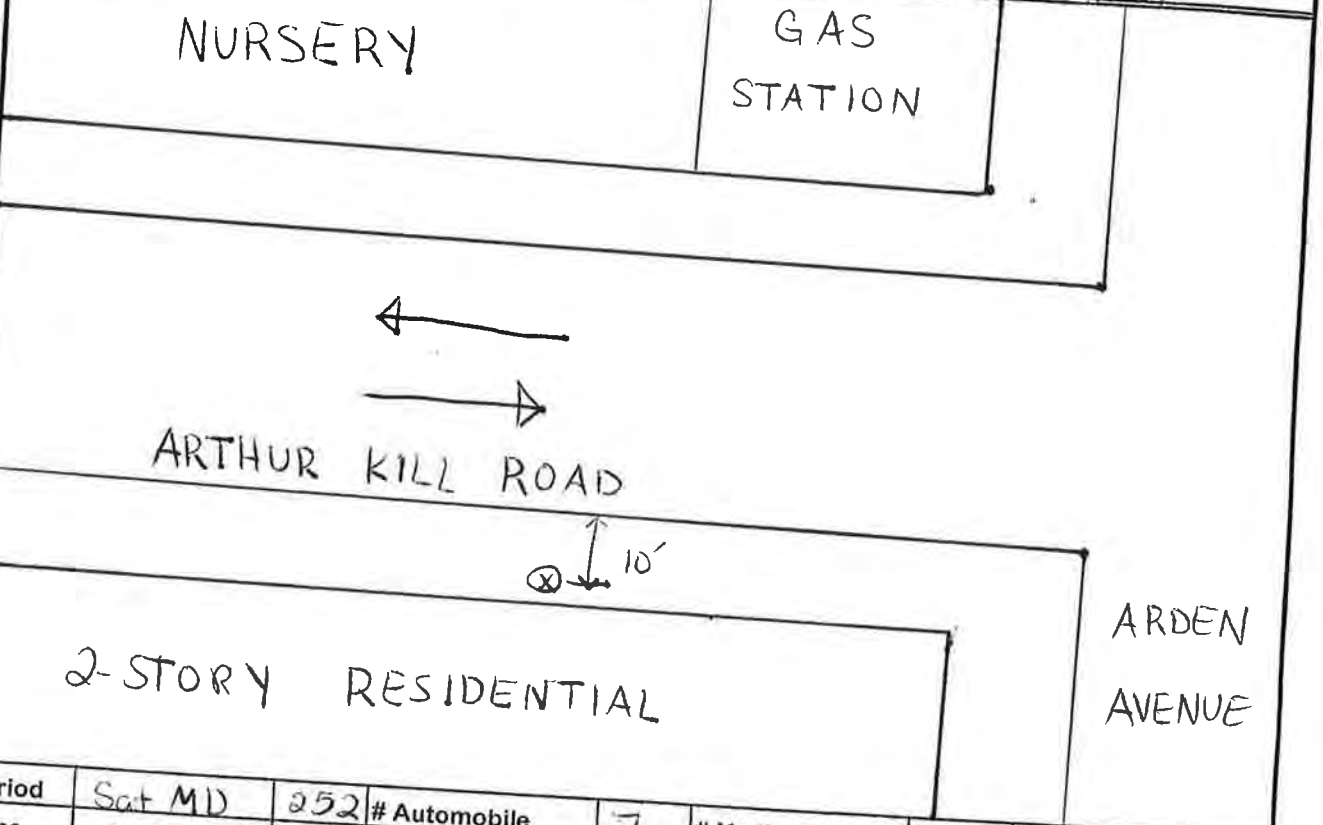
File 0006

File 0007

File 0012

FIELD NOISE MONITORING DATA SHEET
AKRF Inc.

Project Name	Fresh Kills Park		Date	11/17/07
Location	Arthur Kill Rd. b/w Arden Ave & Carlyle		# Site	9
Equipment	B&K 2260 Observer		Observer:	Dan
Plan View	Green			



File 0009

Period	Sat MD	252	# Automobile	7	# Medium Truck	2	# Heavy Truck
Time	2:14 PM	1	# Bus		# Motorcycle		# Airplane/ Train
L1	77.4	L50	65.5	Lmin	56.6	Leq	68.1
L10	70.8	L90	59.4	Lmax	84.3	Lpeak	
Note:							

File 0011

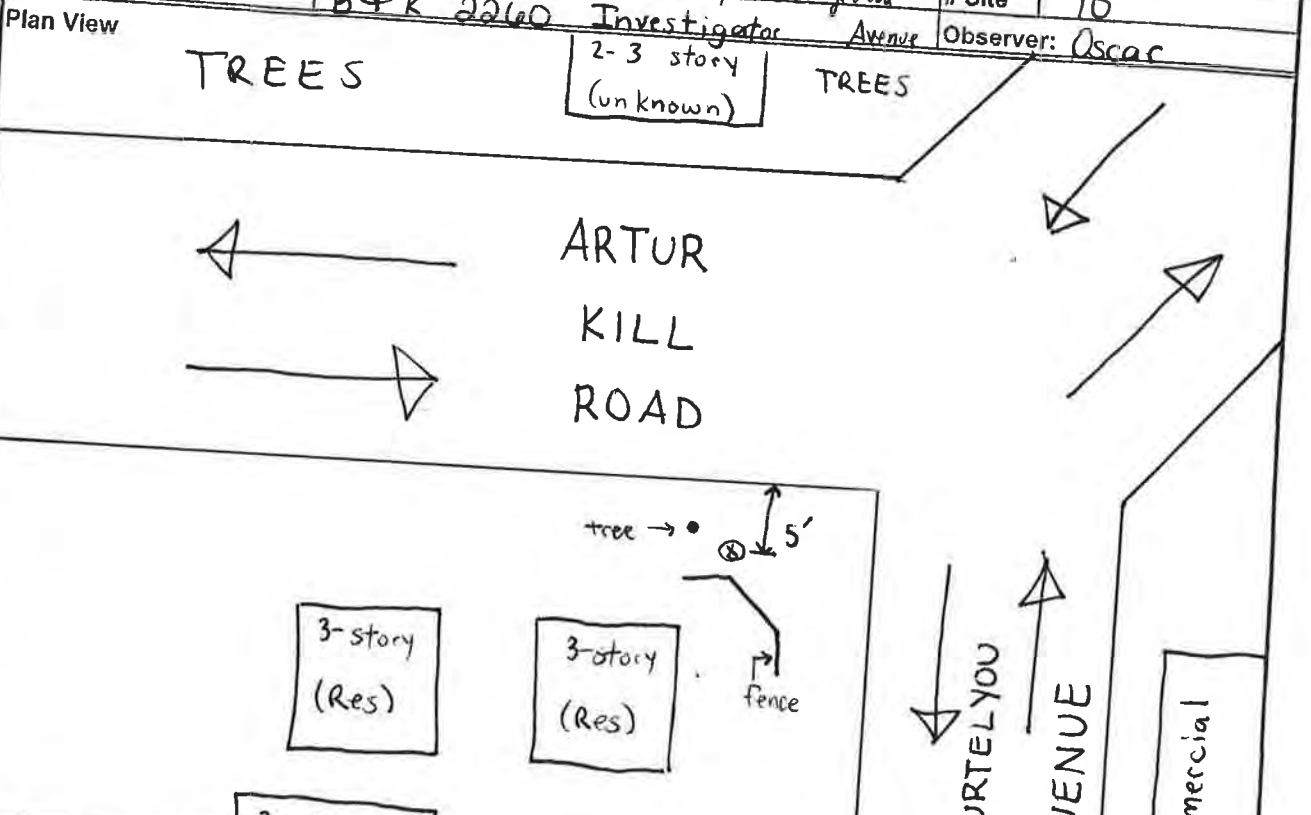
Period	Sat PM	282	# Automobile	8	# Medium Truck	2	# Heavy Truck
Time	4:25 PM	1	# Bus		# Motorcycle		# Airplane/ Train
L1	77.3	L50	66.3	Lmin	57.1	Leq	68.8
L10	72.5	L90	57.1	Lmax	81.1	Lpeak	
Note:							

Period			# Automobile		# Medium Truck		# Heavy Truck
Time			# Bus		# Motorcycle		# Airplane/ Train
L1		L50		Lmin		Leq	
L10		L90		Lmax		Lpeak	
Note:							

Period			# Automobile		# Medium Truck		# Heavy Truck
Time			# Bus		# Motorcycle		# Airplane/ Train
L1		L50		Lmin		Leq	
L10		L90		Lmax		Lpeak	
Note:							

FIELD NOISE MONITORING DATA SHEET
AKRF Inc.

Project Name: Fresh kills
 Location: Arthur Kill Rd. b/w Cortelyou & Ridgewood
 Date: 2/28/08
 Equipment: B&K 2260 Investigator Avenue
 # Site: 10
 Observer: Oscar



File 0008/0009

Period	AM	537	# Automobile	15	# Medium Truck	10	# Heavy Truck
Time	8:39 AM	9	# Bus		# Motorcycle		# Airplane/ Train
L1	82.4	L50	71.8	Lmin	55.6	Leq	73.5
L10	75.9	L90	66.1	Lmax	85.9	Lpeak	
Note:							

File 0010

Period	MD	532	# Automobile	18	# Medium Truck	8	# Heavy Truck
Time	1:53 PM	12	# Bus		# Motorcycle		# Airplane/ Train
L1	81.3	L50	70.8	Lmin	53.0	Leq	72.4
L10	75.1	L90	62.7	Lmax	83.8	Lpeak	
Note:							

File 0013

Period	PM	541	# Automobile	11	# Medium Truck	2	# Heavy Truck
Time	5:44 PM	10	# Bus		# Motorcycle		# Airplane/ Train
L1	70.8	L50	62.9	Lmin	54.4	Leq	63.8
L10	66.1	L90	59.2	Lmax	73.6	Lpeak	
Note:							

Period			# Automobile		# Medium Truck		# Heavy Truck
Time			# Bus		# Motorcycle		# Airplane/ Train
L1		L50		Lmin		Leq	
L10		L90		Lmax		Lpeak	
Note:							

FIELD NOISE MONITORING DATA SHEET
AKRF Inc.

Project Name	Fresh Kills		Date	3/15/08
Location	Arthur Kill Road b/w Courtlyou &		# Site	10
Equipment	BY K 2260		Observer:	Mark A.
Plan View	Ridgewood			

Site 10
(Saturday)

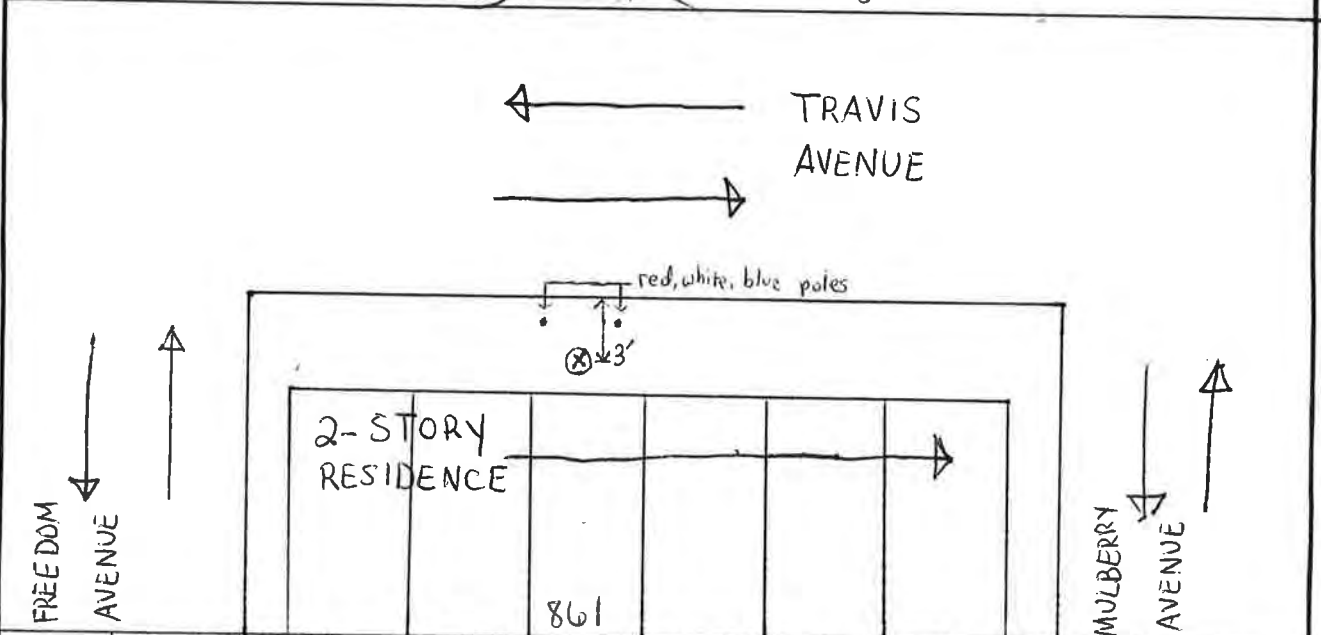
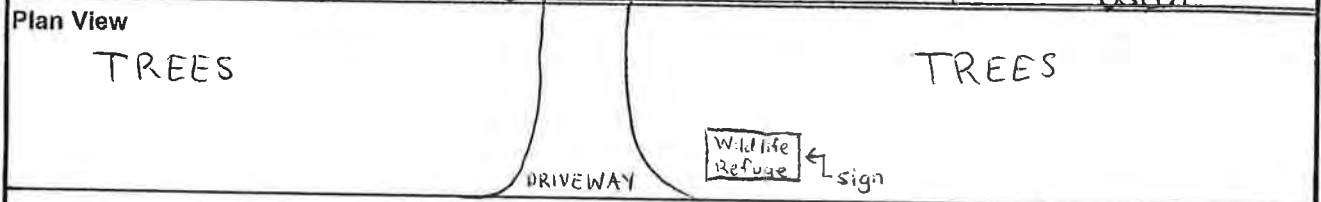
Period	Sat MD	807	# Automobile	3	# Medium Truck	6	# Heavy Truck
Time	2:20 PM	6	# Bus		# Motorcycle		# Airplane/ Train
L1	76.4	L50	68.0	Lmin	54.9	Leq	68.8
L10	70.6	L90	61.2	Lmax	84.9	Lpeak	
Note:							

Period	Sat PM	747	# Automobile	4	# Medium Truck		# Heavy Truck
Time	5:12 PM	3	# Bus		# Motorcycle		# Airplane/ Train
L1	75.6	L50	67.4	Lmin	53.3	Leq	68.2
L10	70.4	L90	60.4	Lmax	79.0	Lpeak	
Note:							

Period			# Automobile		# Medium Truck		# Heavy Truck
Time			# Bus		# Motorcycle		# Airplane/ Train
L1		L50		Lmin		Leq	
L10		L90		Lmax		Lpeak	
Note:							

Period			# Automobile		# Medium Truck		# Heavy Truck
Time			# Bus		# Motorcycle		# Airplane/ Train
L1		L50		Lmin		Leq	
L10		L90		Lmax		Lpeak	
Note:							

Project Name	Fresh kills	Date	2/27/08
Location	Travis Ave. b/w Freedom & Mulberry Ave	# Site	11
Equipment	B&K 2260	Observer:	Oscar



3/4/08
File
0014

Period	AM	302	# Automobile	12	# Medium Truck	8	# Heavy Truck
Time	7:56 AM	8	# Bus		# Motorcycle		# Airplane/ Train
L1		L50		Lmin		Leq	74.6
L10		L90		Lmax		Lpeak	

Note: Road is a little wet

File
0001

Period	MD	289	# Automobile	13	# Medium Truck	1	# Heavy Truck
Time	1:51 PM	6	# Bus		# Motorcycle		# Airplane/ Train
L1	81.4	L50	70.4	Lmin	46.0	Leq	72.8
L10	76.2	L90	54.8	Lmax	89.5	Lpeak	

Note: same as "AM"

File
0004

Period	PM	343	# Automobile	3	# Medium Truck	1	# Heavy Truck
Time	4:47 PM	6	# Bus		# Motorcycle		# Airplane/ Train
L1	78.3	L50	70.1	Lmin	49.0	Leq	71.7
L10	75.1	L90	55.7	Lmax	87.6	Lpeak	

Note: Same as "AM"

Period			# Automobile		# Medium Truck		# Heavy Truck
Time			# Bus		# Motorcycle		# Airplane/ Train
L1		L50		Lmin		Leq	
L10		L90		Lmax		Lpeak	

Note:

FIELD NOISE MONITORING DATA SHEET
AKRF Inc.

Project Name	Fresh kills	Date	3/1/08
Location	Travis Ave b/w Freedom & Mulberry Ave	# Site	11
Equipment	B&K 2210	Observer:	Mark

Plan View

Site 11
Saturday

File
0011

Period	Sat MD	433	# Automobile	5	# Medium Truck		# Heavy Truck
Time	1:35 PM	1	# Bus		# Motorcycle		# Airplane/ Train
L1	76.0	L50	69.5	Lmin	46.3	Leq	70.4
L10	73.9	L90	56.9	Lmax	78.7	Lpeak	

Note:

File
0012

Period	Sat PM	392	# Automobile	3	# Medium Truck		# Heavy Truck
Time	4:00 PM		# Bus		# Motorcycle		# Airplane/ Train
L1	77.2	L50	69.3	Lmin	48.8	Leq	70.7
L10	74.3	L90	57.0	Lmax	84.1	Lpeak	

Note:

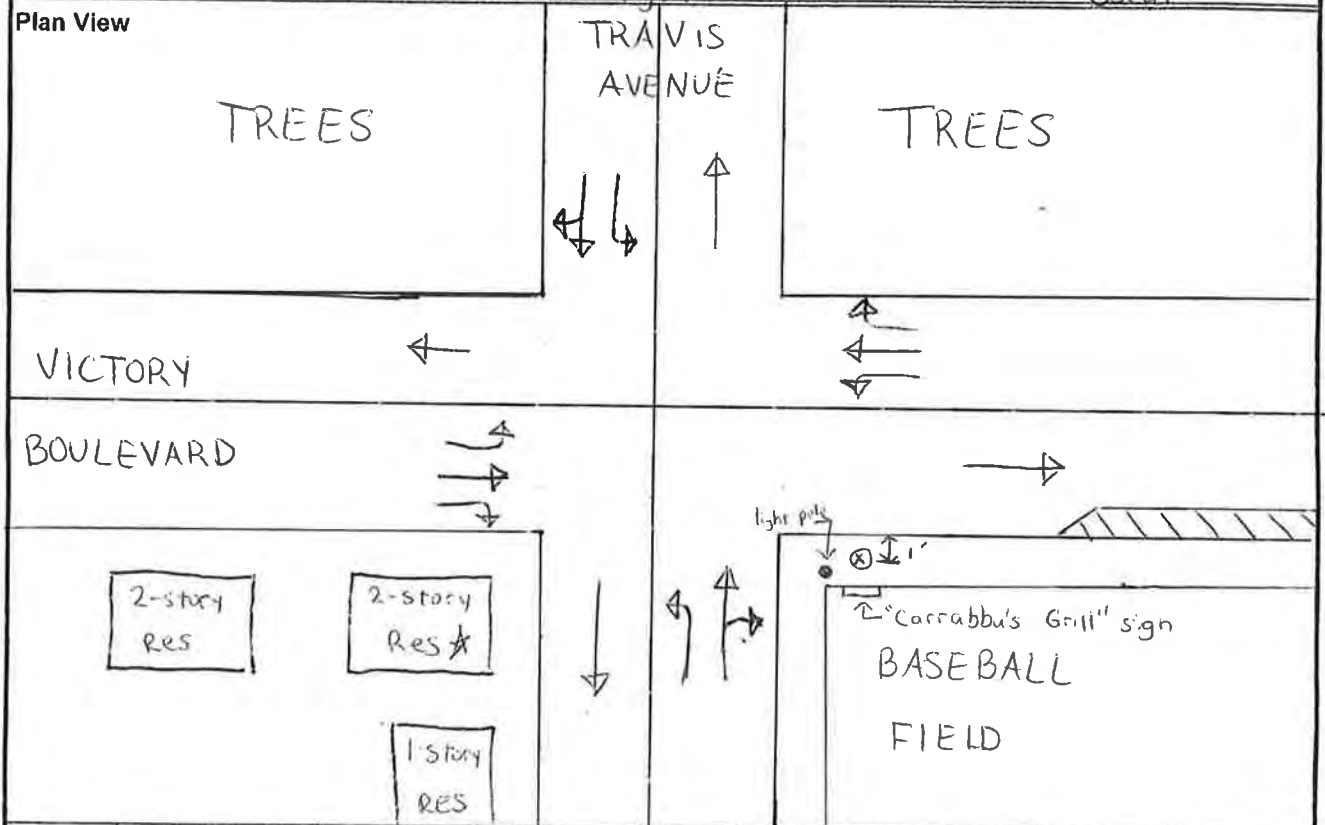
Period			# Automobile		# Medium Truck		# Heavy Truck
Time			# Bus		# Motorcycle		# Airplane/ Train
L1		L50		Lmin		Leq	
L10		L90		Lmax		Lpeak	

Note:

Period			# Automobile		# Medium Truck		# Heavy Truck
Time			# Bus		# Motorcycle		# Airplane/ Train
L1		L50		Lmin		Leq	
L10		L90		Lmax		Lpeak	

Note:

Project Name	Fresh kills	Date	2/27/08
Location	Victory Avenue @ Travis Avenue	# Site	12
Equipment	B&K 2260 Investigator	Observer:	Oscar



Period	AM	247	# Automobile	7	# Medium Truck	3	# Heavy Truck
Time	8:25 AM	11	# Bus		# Motorcycle		# Airplane/ Train
L1	81.1	L50	67.8	Lmin	57.2	Leq	70.7
L10	73.3	L90	62.1	Lmax	86.2	Lpeak	

Note:

Period	MD	334	# Automobile	11	# Medium Truck	1	# Heavy Truck
Time	2:30 PM	6	# Bus		# Motorcycle		# Airplane/ Train
L1	81.9	L50	66.9	Lmin	55.8	Leq	70.9
L10	72.8	L90	60.8	Lmax	88.7	Lpeak	

Note: House with "star" had roosters outside (a little noise in beginning)

Period	PM	381	# Automobile	3	# Medium Truck	1	# Heavy Truck
Time	5:19 PM	5	# Bus		# Motorcycle		# Airplane/ Train
L1	82.5	L50	67.2	Lmin	58.3	Leq	71.4
L10	72.3	L90	61.9	Lmax	91.9	Lpeak	

Note:

Period			# Automobile		# Medium Truck		# Heavy Truck
Time			# Bus		# Motorcycle		# Airplane/ Train
L1		L50		Lmin		Leq	
L10		L90		Lmax		Lpeak	

Note:

3/4/08
File
0015

File
0002

File
0005

FIELD NOISE MONITORING DATA SHEET
AKRF Inc.

Project Name	Fresh Kills Park	Date	2/2/08
Location	Travis Avenue + Victory	# Site	12
Equipment	2260 Investigator	Observer:	L. Miner

Plan View

Site 12
Saturday

Period	Sat MD	320	# Automobile	3	# Medium Truck	0	# Heavy Truck
Time	12:29 PM	2	# Bus	0	# Motorcycle	0	# Airplane/ Train
L1	69.8	L50	63.2	Lmin	54.5	Leq	64.2
L10	67.1	L90	58.7	Lmax	72.7	Lpeak	
Note:							

Period	Sat PM	369	# Automobile	3	# Medium Truck	1	# Heavy Truck
Time	15:33 PM	0	# Bus	0	# Motorcycle	0	# Airplane/ Train
L1	71.3	L50	64.1	Lmin	54.3	Leq	65.0
L10	67.7	L90	58.4	Lmax	75.7	Lpeak	
Note:							

Period			# Automobile		# Medium Truck		# Heavy Truck
Time			# Bus		# Motorcycle		# Airplane/ Train
L1		L50		Lmin		Leq	
L10		L90		Lmax		Lpeak	
Note:							

Period			# Automobile		# Medium Truck		# Heavy Truck
Time			# Bus		# Motorcycle		# Airplane/ Train
L1		L50		Lmin		Leq	
L10		L90		Lmax		Lpeak	
Note:							

File
0001

File
0005

Project Name		Fresh Kills			Date	2/28/08	
Location		Melvin Avenue (Dead End)			# Site	A	
Equipment		B&K 2260 Investigator			Observer:	Oscar	
Plan View				TRES AND OPEN AREA			
PLAYGROUND ← Basketball Court				OPEN FIELD			
<p>grass → 1 pole 3'</p>				<p>OR pole</p>			
2-story Res	2-story Res	2-story Res (House has 2 front doors and flag outside)	1-story RES	2-story Res	2-story Res		
Period	AM		# Automobile		# Medium Truck		# Heavy Truck
Time	8:52 AM		# Bus		# Motorcycle		# Airplane/ Train
L1		L50		Lmin		Leq	54.7
L10		L90		Lmax		Lpeak	
Note: Some air traffic noise							
Period	MD	4	# Automobile		# Medium Truck		# Heavy Truck
Time	2:37 PM		# Bus		# Motorcycle		# Airplane/ Train
L1	56.5	L50	50.9	Lmin	47.8	Leq	51.7
L10	53.3	L90	49.4	Lmax	66.5	Lpeak	
Note:							
Period	PM	1	# Automobile		# Medium Truck		# Heavy Truck
Time	5:07 PM		# Bus		# Motorcycle		# Airplane/ Train
L1	60.1	L50	50.7	Lmin	48.0	Leq	52.7
L10	52.9	L90	49.4	Lmax	75.8	Lpeak	
Note:							
Period			# Automobile		# Medium Truck		# Heavy Truck
Time			# Bus		# Motorcycle		# Airplane/ Train
L1		L50		Lmin		Leq	
L10		L90		Lmax		Lpeak	
Note:							

3/4/08
File
0016

File
0011

File
0012

Project Name	Fresh Kills	Date	3/1/08
Location	Melvin Avenue	# Site	A
Equipment	B&K 2260 Investigator	Observer:	Mark

Plan View

Site 13
SATURDAY

File
0010

Period	Sat MD		# Automobile		# Medium Truck		# Heavy Truck
Time	12:59 PM		# Bus		# Motorcycle		# Airplane/ Train
L1	58.0	L50	52.5	Lmin	49.7	Leq	53.1
L10	54.9	L90	51.2	Lmax	61.6	Lpeak	

Note:

File
0013

Period	Sat PM		# Automobile		# Medium Truck		# Heavy Truck
Time	4:36 PM		# Bus		# Motorcycle		# Airplane/ Train
L1	61.3	L50	52.8	Lmin	48.8	Leq	54.1
L10	56.0	L90	50.6	Lmax	66.1	Lpeak	

Note:

Period			# Automobile		# Medium Truck		# Heavy Truck
Time			# Bus		# Motorcycle		# Airplane/ Train
L1		L50		Lmin		Leq	
L10		L90		Lmax		Lpeak	

Note:

Period			# Automobile		# Medium Truck		# Heavy Truck
Time			# Bus		# Motorcycle		# Airplane/ Train
L1		L50		Lmin		Leq	
L10		L90		Lmax		Lpeak	

Note:

Receptor	Amphitheater		Distance factor = $20\log(D/300)$								Shielding	dBA at receptor
	Lp dBA	Shielding	Source Location			Receptor Location			Distance	Attenuation		
	300 feet		X	Y	Z	X	Y	Z	(feet)	dBA		
Site 1	86	Yes	930616	148321	20.0	930,324	145,799	10	2539	19	10	57
Site 2	86	Yes	930616	148321	20.0	930,367	141,642	20	6684	27	10	49
Site 3	86	Yes	930616	148321	20.0	931,296	144,426	20	3954	22	10	53
Site 4	86	Yes	930616	148321	20.0	937,637	147,658	25	7052	27	10	48
Site 5	86	Yes	930616	148321	20.0	940,563	149,808	61	10057	31	10	45
Site 6	86	Yes	930616	148321	20.0	938,850	152,967	20	9455	30	10	46
Site 7	86	Yes	930616	148321	20.0	931,374	154,932	20	6654	27	10	49
Site 8	86	Yes	930616	148321	20.0	930,370	153,760	20	5444	25	10	51
Site 9	86	Yes	930616	148321	20.0	929,064	142,592	15	5936	26	10	50
Site 10	86	Yes	930616	148321	20.0	938,318	143,359	20	9162	30	10	46
Site 11	86	Yes	930616	148321	20.0	938,008	155,684	20	10434	31	10	45
Site 12	86	Yes	930616	148321	20.0	934,644	157,807	20	10305	31	10	45
Site A	86	Yes	930616	148321	20.0	932,166	154,061	20	5946	26	10	50
Site 13	86	Yes	930616	148321	20.0	931,805	154,223	20	6021	26	10	50

Softball Field Noise Calculations

Site	Time	Playground Leq(1)	Distance Attenuation								Playground Leq(1)
			Playground boundary coordinate			Receptor coordinate			Distance (feet)	Distance Attenuation (15Log(D/10))	
			X	Y	Z	X	Y	Z			
1	AM	68.2	933128	154501	20	930,324	145,799	10	9143	44	23.8
2	AM	68.2	933128	154501	20	930,367	141,642	20	13153	47	21.4
3	AM	68.2	933128	154501	20	931,296	144,426	20	10240	45	23.0
4	AM	68.2	933128	154501	20	937,637	147,658	25	8195	44	24.5
5	AM	68.2	933128	154501	20	940,563	149,808	61	8792	44	24.0
6	AM	68.2	933128	154501	20	938,850	152,967	20	5924	42	26.6
7	AM	68.2	933128	154501	20	931,374	154,932	20	1806	34	34.3
8	AM	68.2	933128	154501	20	930,370	153,760	20	2855	37	31.4
9	AM	68.2	933128	154501	20	929,064	142,592	15	12584	46	21.7
10	AM	68.2	933128	154501	20	938,318	143,359	20	12291	46	21.9
11	AM	68.2	933128	154501	20	938,008	155,684	20	5021	41	27.7
12	AM	68.2	933128	154501	20	934,644	157,807	20	3637	38	29.8
A	AM	68.2	933128	154501	20	932,166	154,061	20	1058	30	37.8
13	AM	68.2	933128	154501	20	931,805	154,223	20	1352	32	36.2

Playground Noise	
drop-off based on SCA study	
4.8	20 feet
6.8	30 feet
9.1	40 feet
4.5 dBA drop-off per doubling distance at 40-300 feet	
6 dBA drop-off per doubling distance after 300 feet	

Maximum Hourly Playground Boundary Leq(1) Noise Levels			
Time Period	Elementary Schools	Intermediate School	High School
AM	69.3	64.9	68.2
PM	62.9	64.3	64.3

Applicable

Fresh Kills Parks -- Predicted Parking Lot Noise Levels

Computation of Noise Exposure at 50 feet for Parking Lot General Assessment - Peak Hour

SEL ref (Parking Lot)

$$\begin{aligned}
 \text{Peak Hour } L_{eq} \text{ at 50 feet} \quad L_{eq} \text{ (peak)} &= \text{SEL ref} + 10\log(N_A/2000+N_B/24) - 35.6 \\
 &= 101.00 + -16.99 - 35.60 \\
 &= 48.41 \\
 \\
 \text{Total } L_{eq} \text{ at 50 feet} \quad L_{eq} \text{ (increment)} &= 10\log [(10^{(L_{eq}(\text{parking})/10)} + 10^{(L_{eq}(\text{rail})/10)})] \\
 &= 48.41 \\
 \\
 \text{Noise level at the closest Residence} &= 42.4
 \end{aligned}$$

where: SELref (12 buses, 1000 cars in peak activity hour) = 101.00

N_A = Number of automobiles per peak hour = 40.00

N_B = Number of buses per peak hour = 0.00 N/A

Distance of the closest Residence from the parking lot = 100 feet

