

# CONNECT THE DOTS

*ecologically-based  
design solutions for  
networking urban  
open space*

*Timon McPhearson  
Taylor Drake  
Chris Hepner  
Josh Snow*

URBAN  
ECOLOGICAL  
SPACES ARE

DIS  
NEC  
CON  
TED

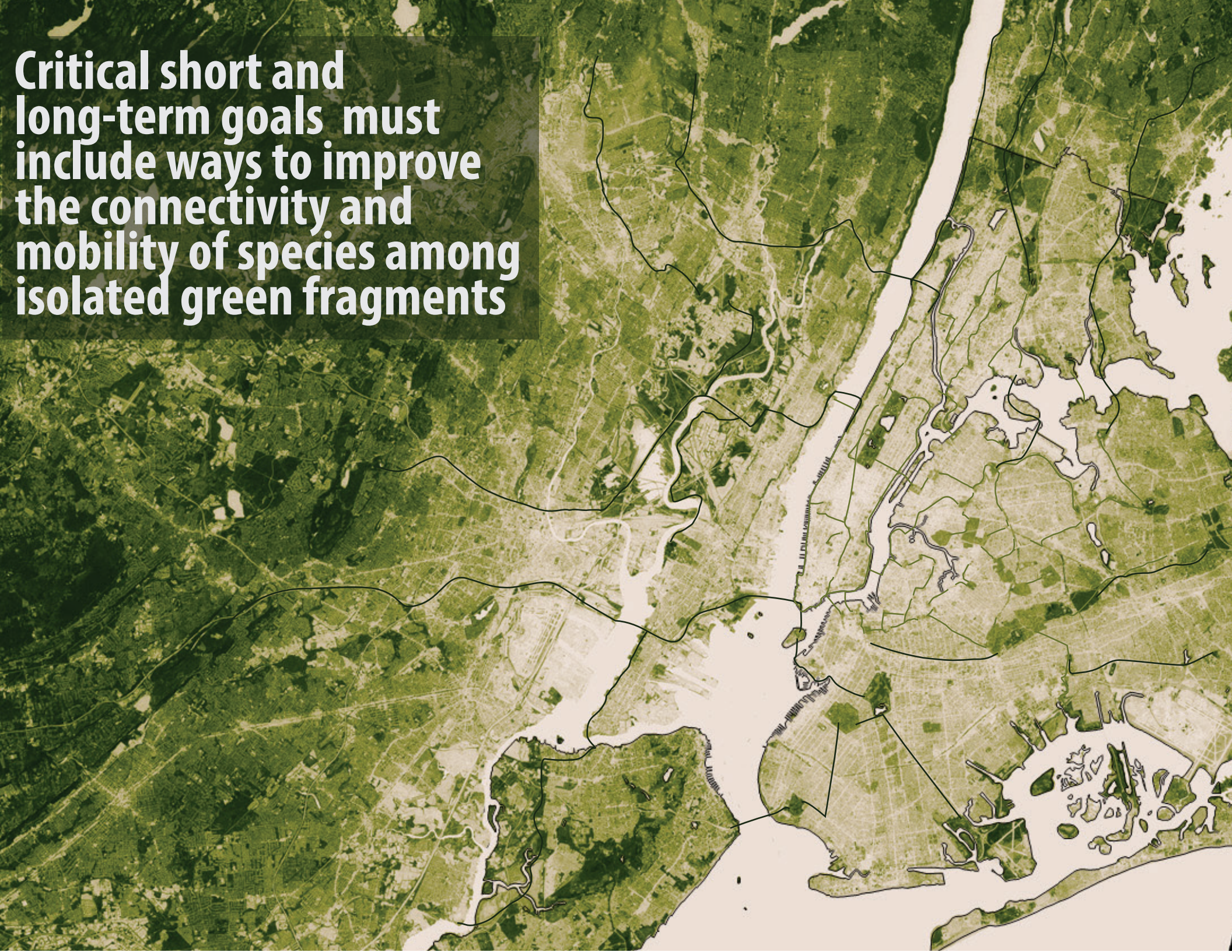
An aerial photograph of New York City and its surrounding areas, including parts of New Jersey and Connecticut. A network of green lines is overlaid on the map, representing a proposed urban ecology network. The lines are thicker in some areas, particularly along the Hudson River and in the city center, and thinner in others. The map shows various urban, suburban, and rural areas, with the Hudson River and its tributaries clearly visible. The green lines generally follow the paths of waterways and connect various green spaces across the region.

**a networked  
urban ecology**

**to reimagine a  
more connected  
and greener  
New York City**



**Critical short and long-term goals must include ways to improve the connectivity and mobility of species among isolated green fragments**







VIRGINIA THREESEED MERCURY  
 RED MAPLE  
 STARVED PANICGRASS  
 PRAIRIE FLEABANE  
 VIRGINIA CREEPER  
 BLACK CHERRY  
 ROUNDLEAF GREENBRIER  
 BLACKHAW  
 WHITEWOOD ASTOR



MEADOW VOLE  
 WHITE FOOTED MOUSE  
 DEER MOUSE



SEMI PALMATED PLOVER

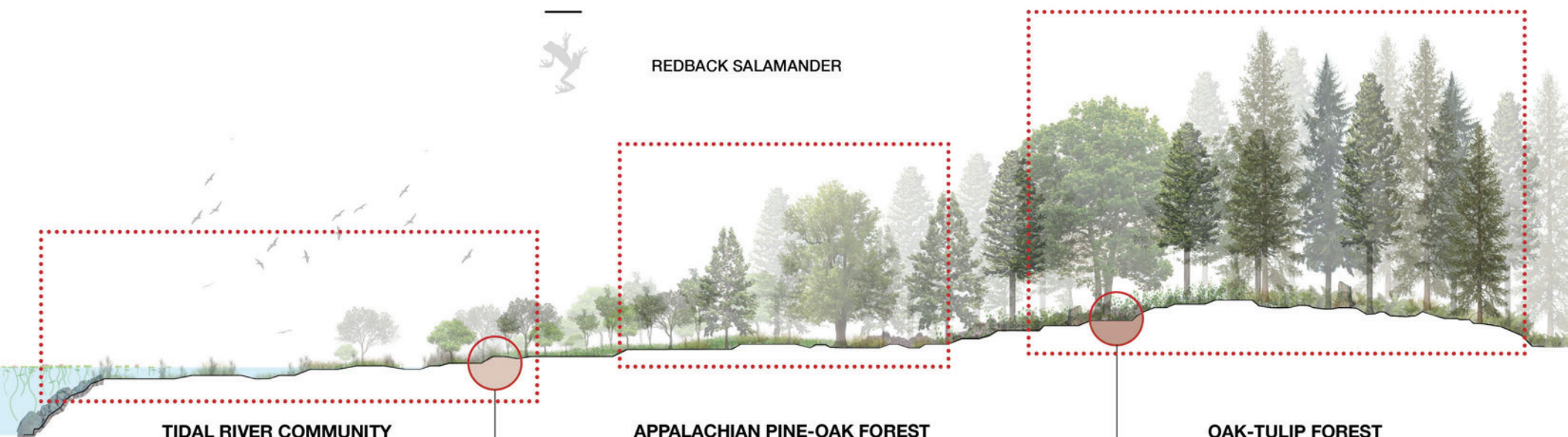


BROWN SNAKE  
 EASTERN MILK SNAKE  
 EASTERN PAINTED TURTLE  
 SNAPPING TURTLE



REDBACK SALAMANDER

All urban species, whether  
 insects, microbes,  
 mammals, birds, or plants,  
 require **mobility**



TIDAL RIVER COMMUNITY



ROCKY MARINE  
 BOTTOM SOIL

APPALACHIAN PINE-OAK FOREST



CHARLTON  
 SUTTON SOIL

OAK-TULIP FOREST







**queensboro  
bridge**

**bayside**

**alphabet  
city**

**case studies in different  
neighborhoods illustrate what a  
more ambitious view of a  
networked ecology could look  
like, and how it is possible**



bayside

# Potential Connections



Little Neck Bay

Alley Pond Park

Cunningham Park

Kissena Park



bayside

# Proposed Patches



Corridor

Patch D

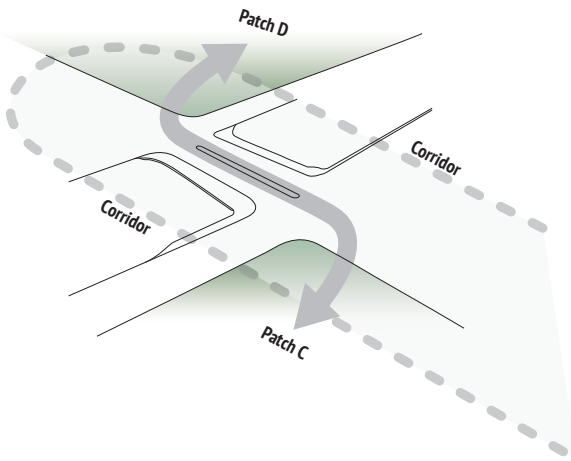
Patch A

Patch B

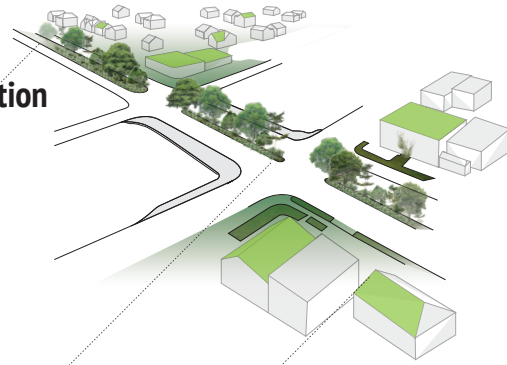
Patch C



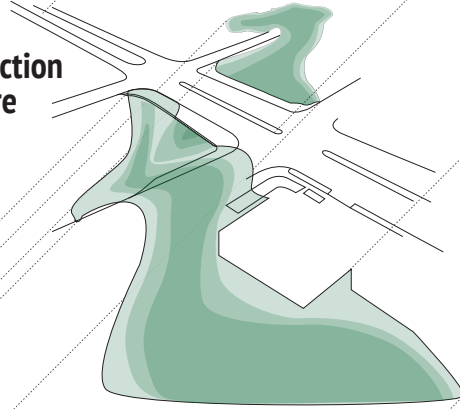
### Critical Point for Connection



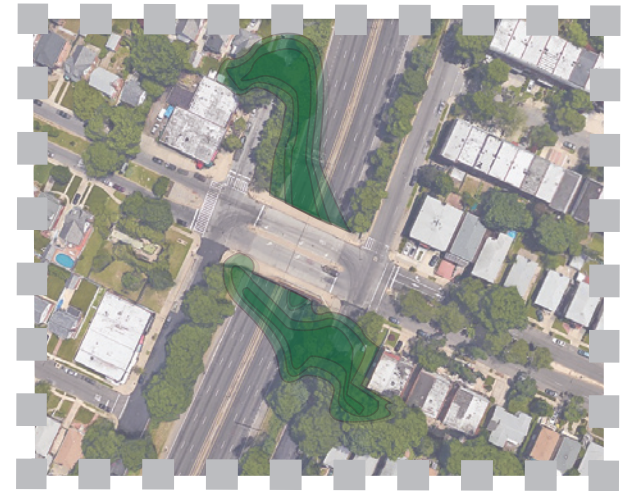
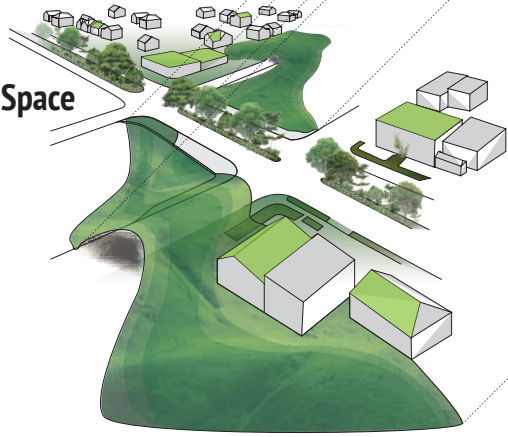
### Proposed Patch Connection Enhancement



### Potential Patch Connection Infrastructure



### Proposed Canopy & Green Space





alphabet  
city

Vertical

Roof

Canopy

Floor



alphabet  
city

**LATERAL**

Roof - Roof

Floor - Floor

Canopy - Canopy

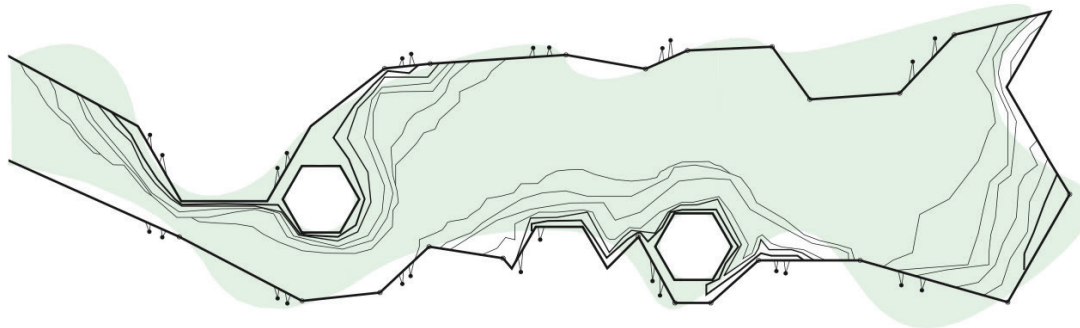
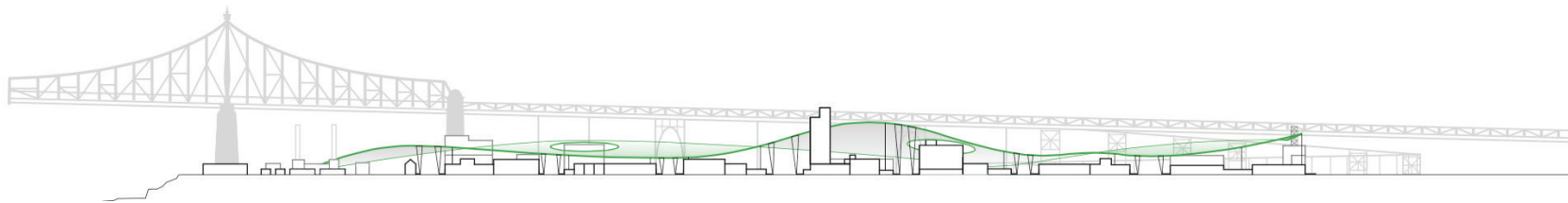
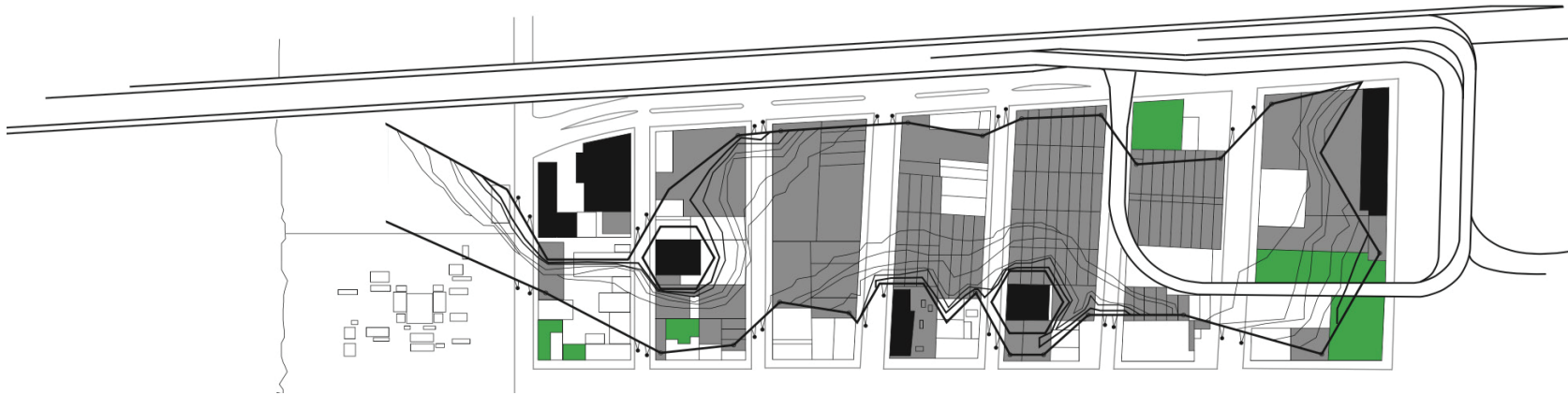




reexamine how built infrastructure can take advantage of micro-urban spaces, green walls and roofs, green streets and other corridor connections that can deliver increased **mobility**

queensboro  
bridge





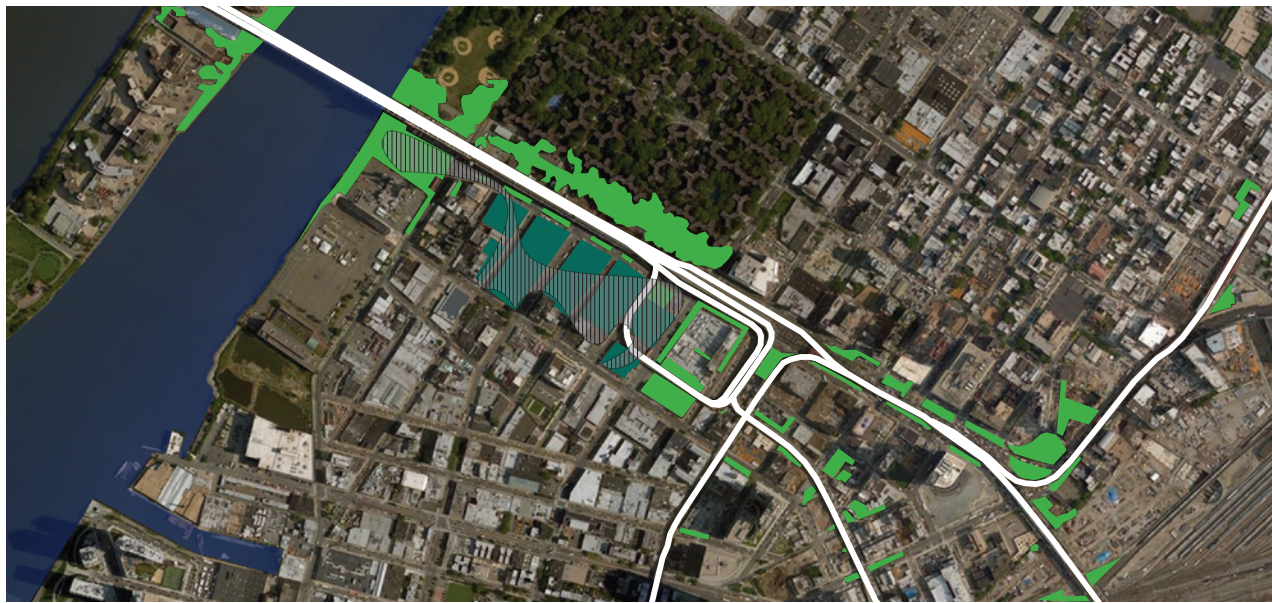
queensboro  
bridge





queensboro  
bridge





queensboro  
bridge





queensboro  
bridge



# URBAN ECOLOGY LAB

