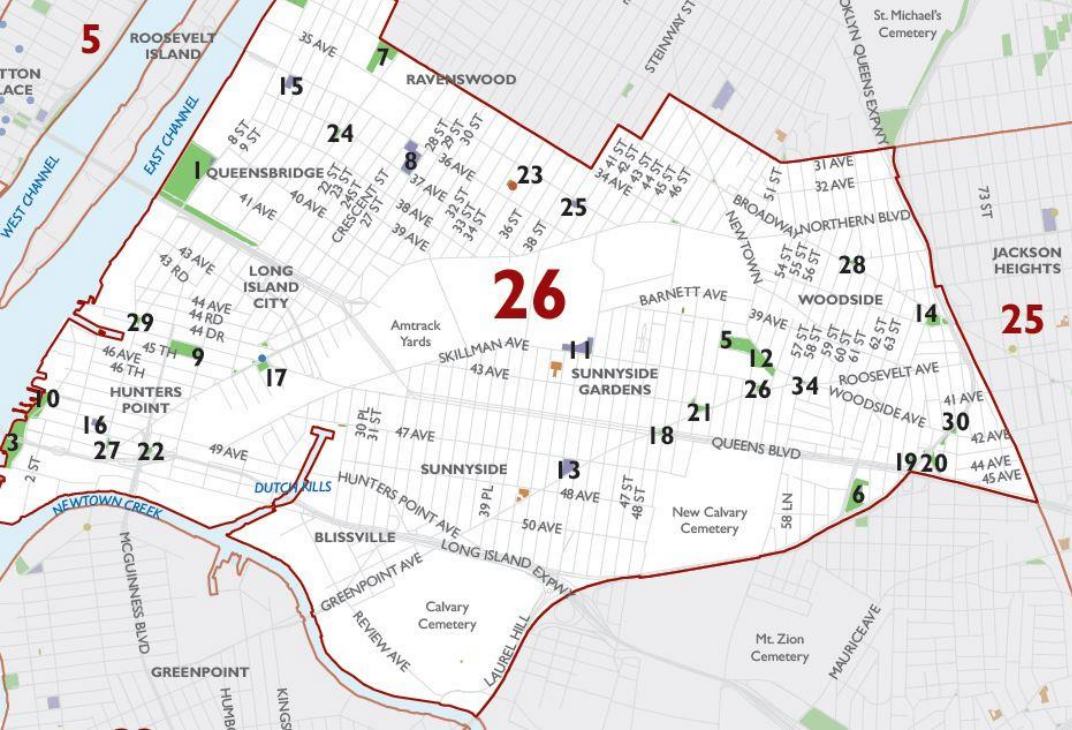


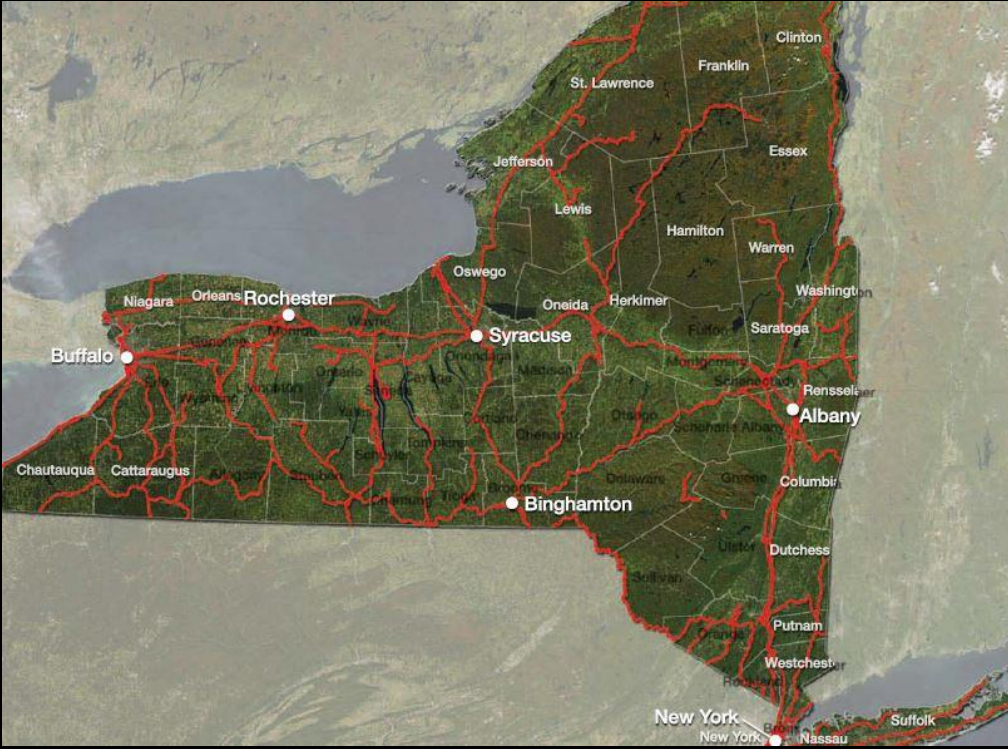
Parks Without Borders Summit

May 24, 2016

Signe Nielsen, FASLA

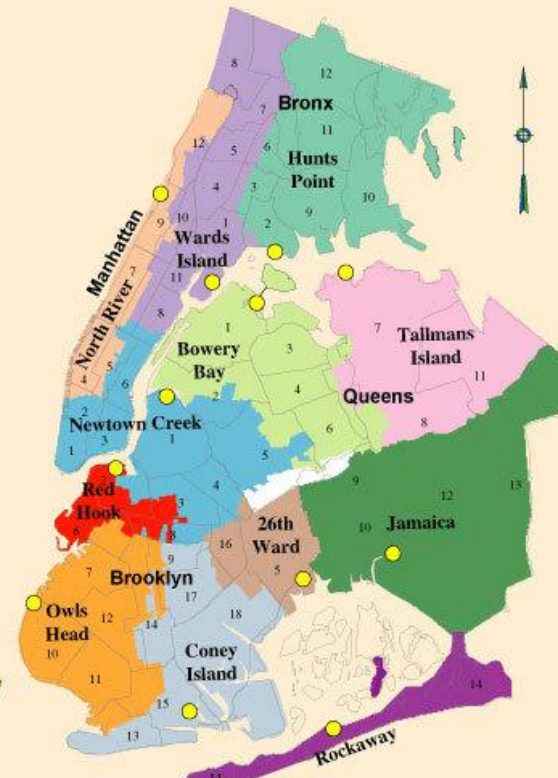
Principal, Mathews Nielsen Landscape Architects





Plant Location	Capacity (MGD)
North River	170
Wards Island	275
Hunts Point	200
Newtown Creek	310
Red Hook	60
26th Ward	85
Owls Head	120
Coney Island	110
Bowery Bay	150
Tallmans Island	80
Jamaica	100
Rockaway	45
Port Richmond	60
Oakwood Beach	40

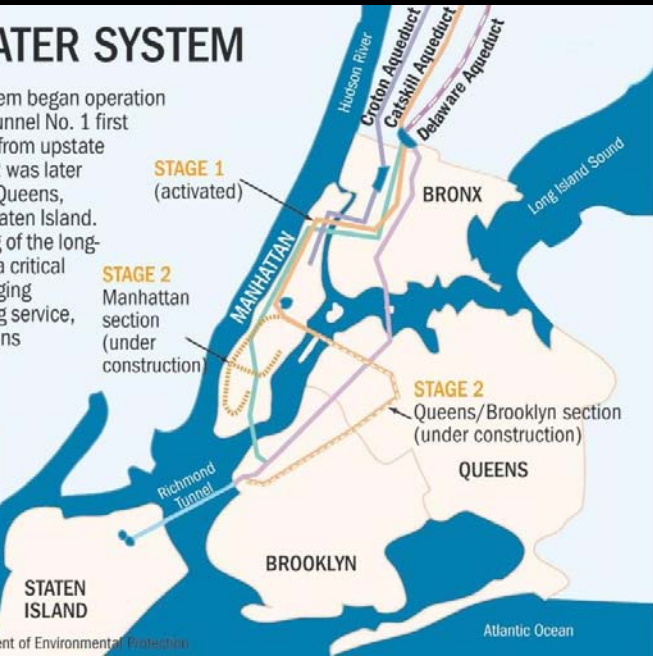
● Indicates Plant Location in Drainage Area
 #1-18 Numbered map regions represent Community Boards



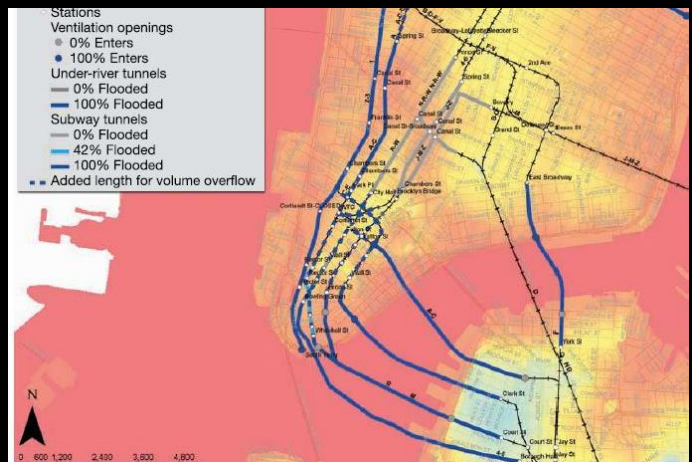
NYC WATER SYSTEM

The current system began operation in 1917, when Tunnel No. 1 first delivered water from upstate reservoirs. No. 2 was later added to serve Queens, Brooklyn and Staten Island. Now another leg of the long-planned No. 3, a critical backup to the aging No. 1, is entering service, a section that runs from West 79th Street to lower Manhattan.

- Tunnel No. 1
- Tunnel No. 2
- Tunnel No. 3



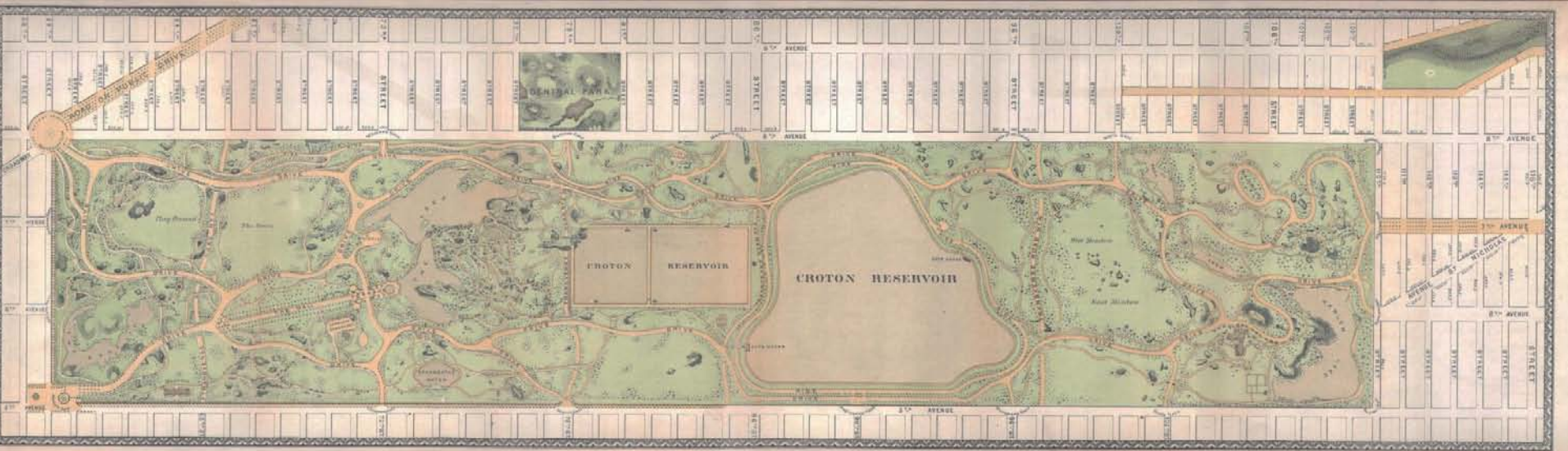
Source: NYC Department of Environmental Protection





0 3.75 7.5 15 Kilometers

- Community Gardens
- Green Streets
- Parks









**MANHATTAN AVE
STREET END
PARK**

**BOX STREET
PARK**

**GREENPOINT
PLAYGROUND**

**NEWTOWN BARGE
TERMINAL
PLAYGROUND**

**TRANSMITTER
PARK & EXPANSION**

**WATERFRONT
GARDENS**





The City of Austin
Urban Forestry Board

Austin's Urban Forest Plan

A Master Plan for Public Property









2014 POLAR PLUNGE
WINTER FESTIVAL

RUN · PLUNGE · PLAY · REPEAT

SPECIAL OLYMPICS POLAR PLUNGE

Where: Tim's River Shore
510 Cherry Hill Rd, Dumfries, VA
When: Saturday Feb. 22, 2014



Special Olympics
Virginia
Northern Virginia Area 26

Please Join the Area 26 TEAM!!!
Register to Plunge and Donate at:
www.firstgiving.com/team/248370

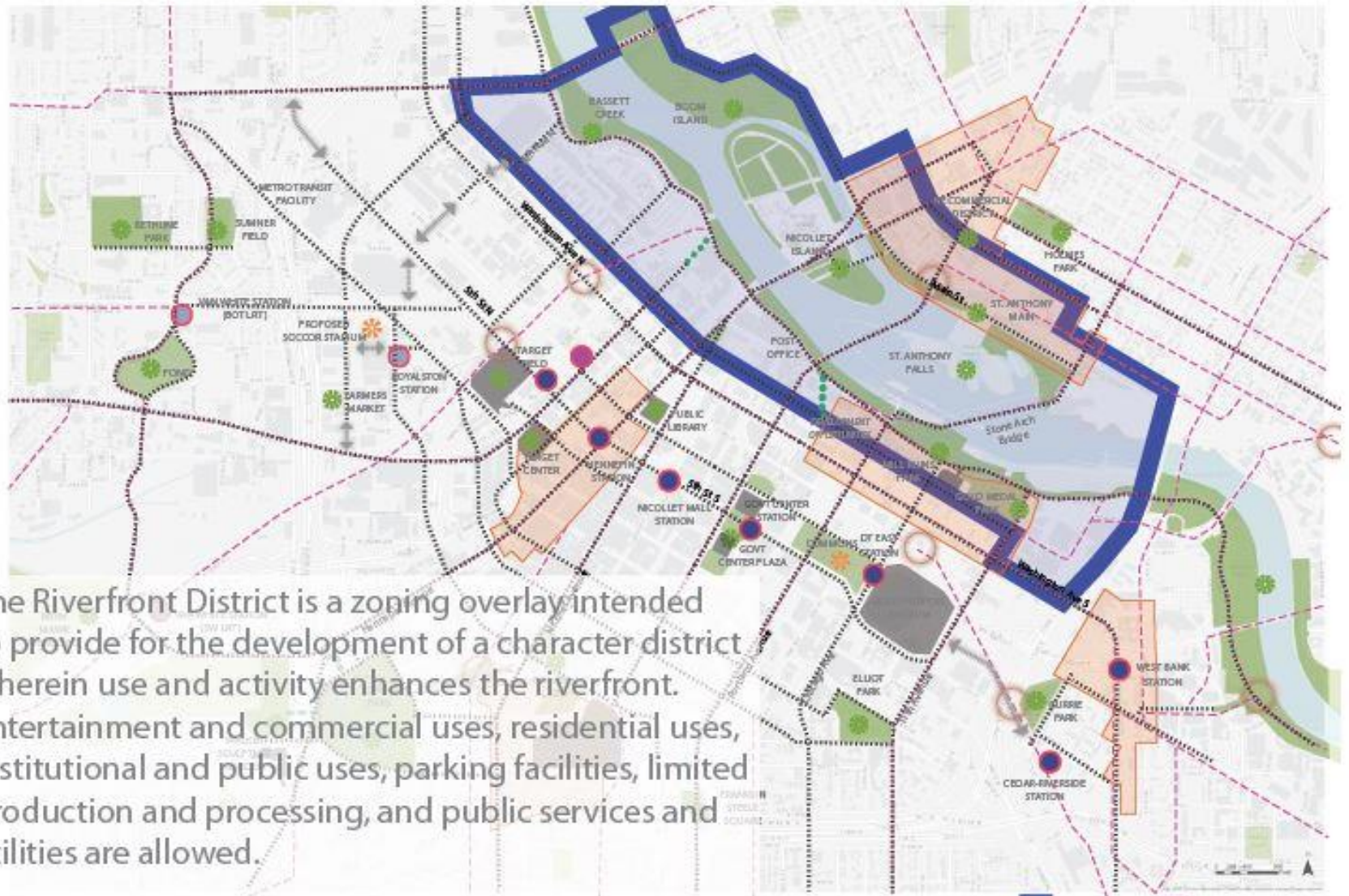
 **First Giving** Be where the giving happens.

Contact:
Jed Dearborn
jdearborn@schiffhardin.com

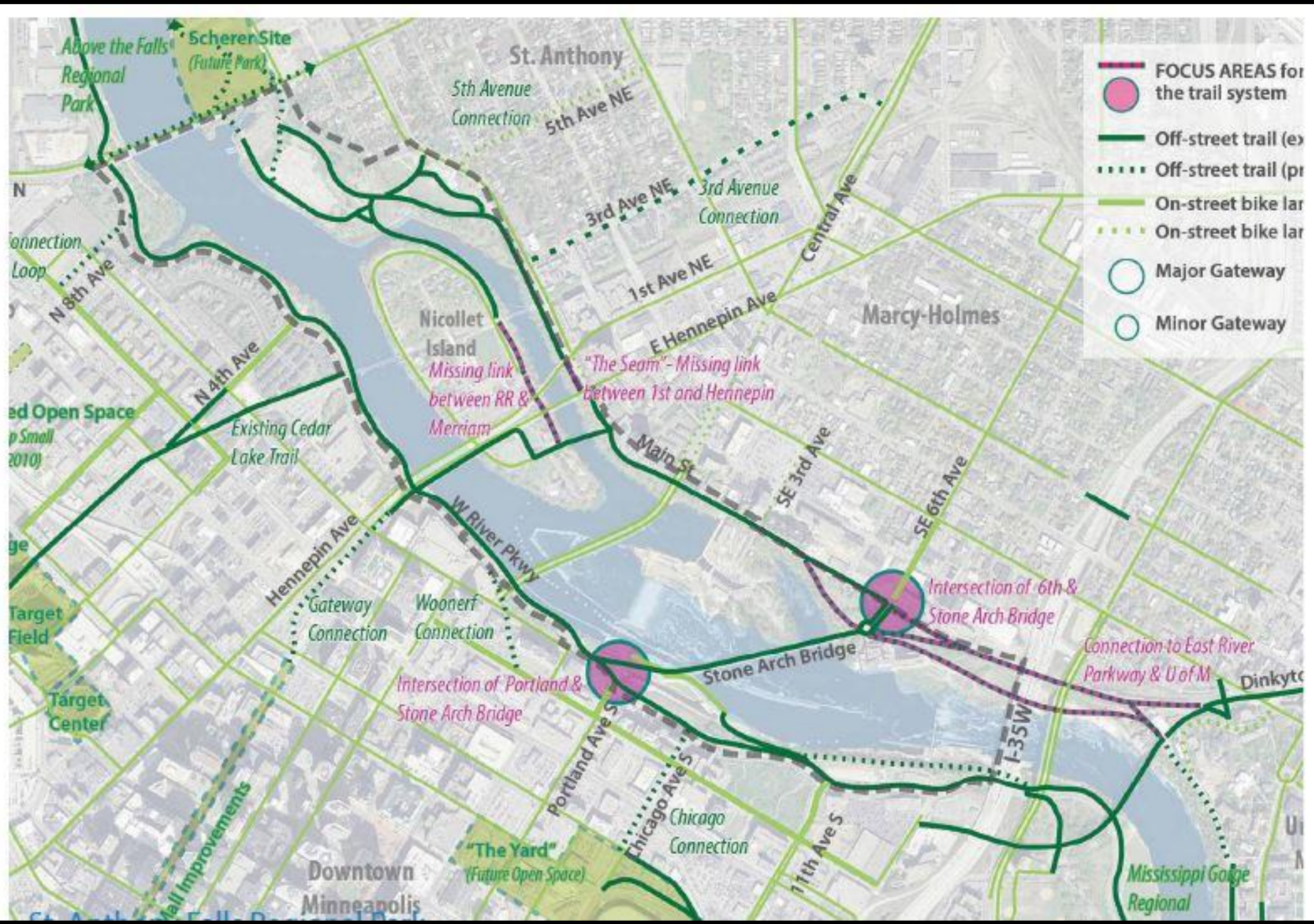


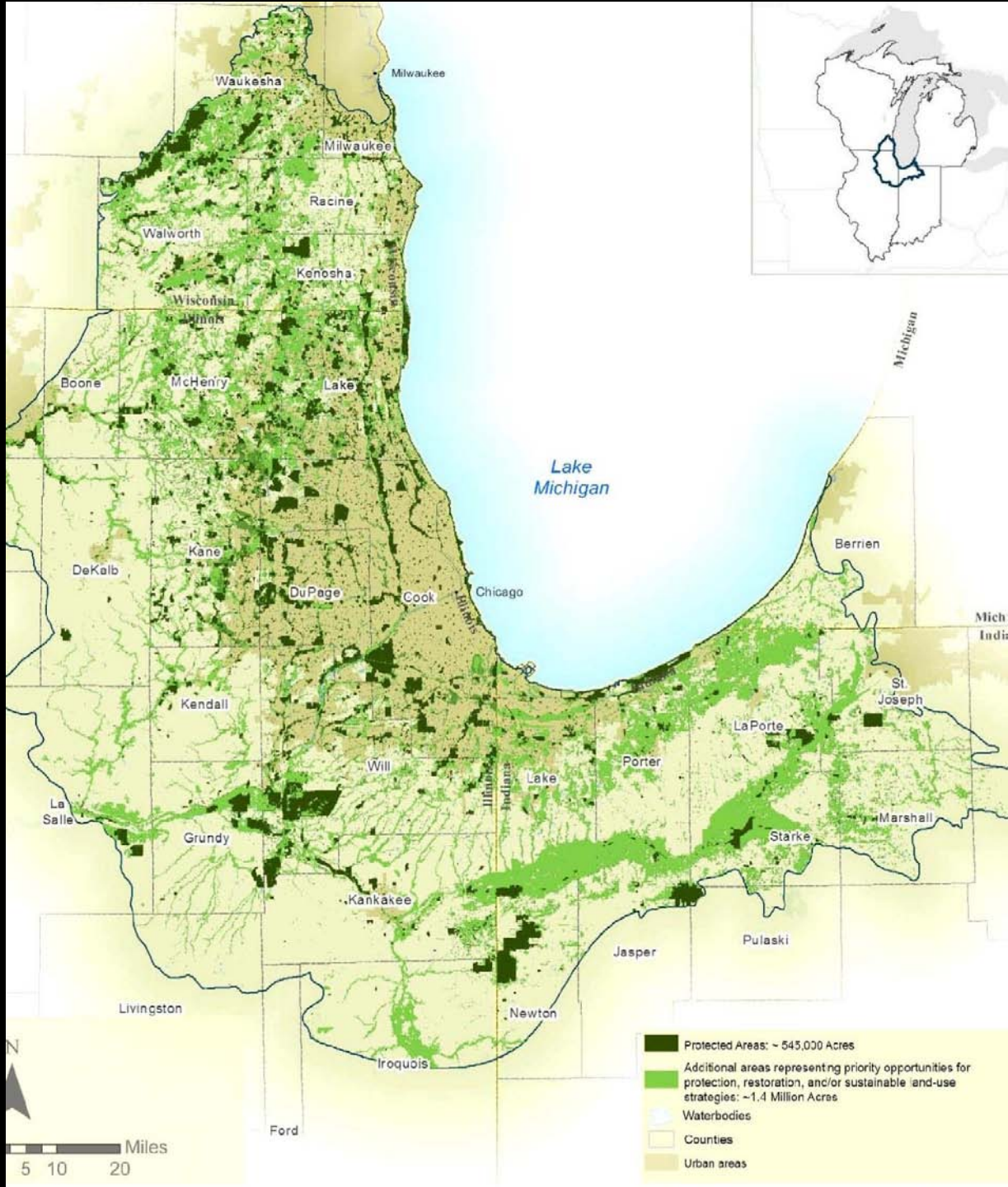
ENSYN

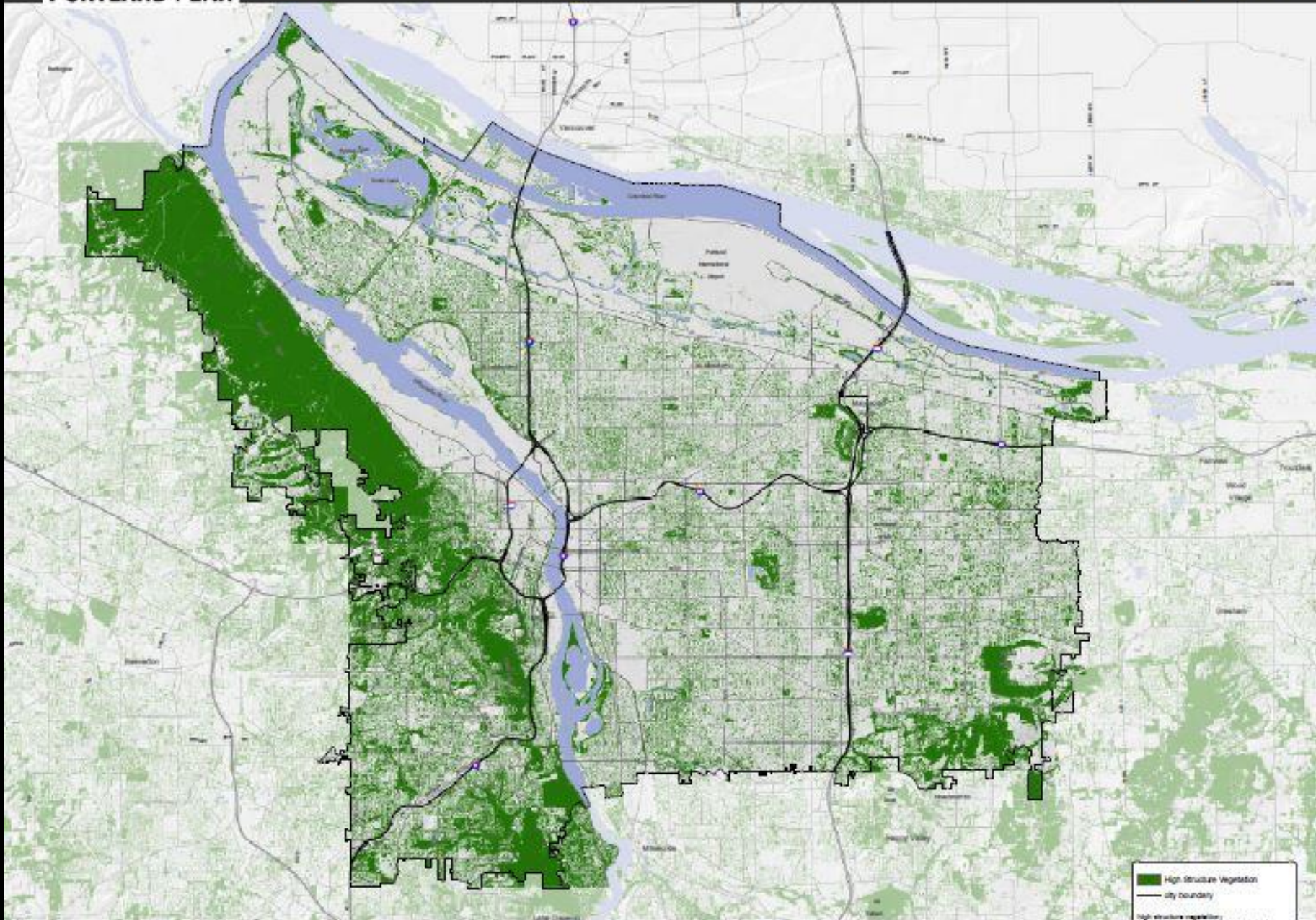
FRAMEWORK PLAN - RIVERFRONT DISTRICT



The Riverfront District is a zoning overlay intended to provide for the development of a character district wherein use and activity enhances the riverfront. Entertainment and commercial uses, residential uses, institutional and public uses, parking facilities, limited production and processing, and public services and utilities are allowed.







■ High Structure Vegetation
— city boundary

High structure vegetation:
developed by Mero from 2007 air-born
color infra-red orthophoto. The classification
was performed using radiometric, textural, and
primary local classification methods.

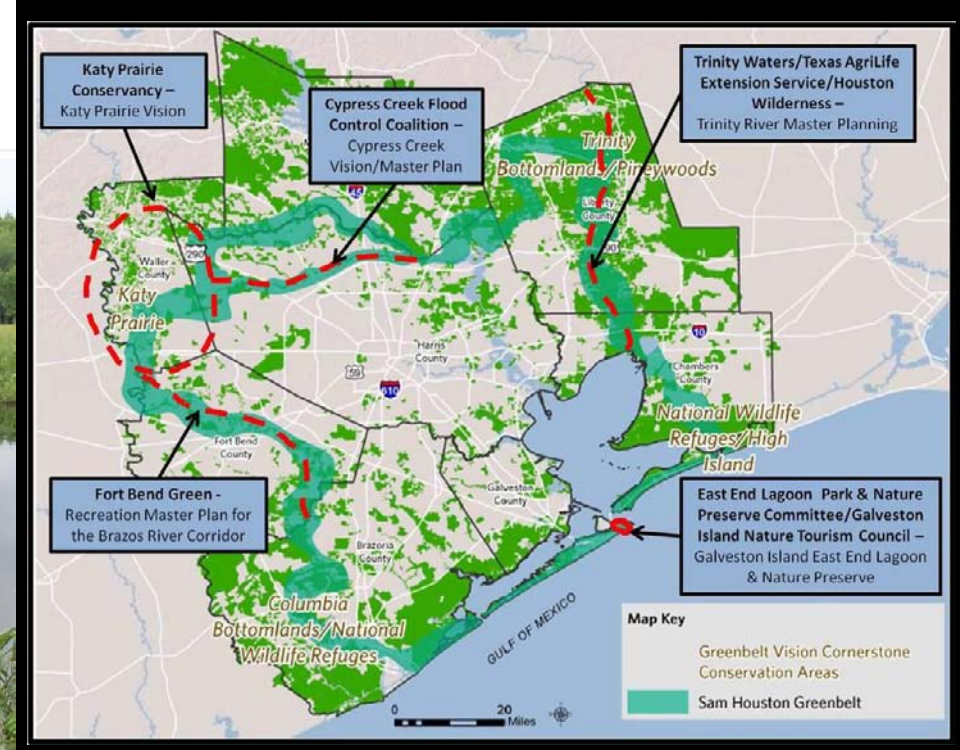
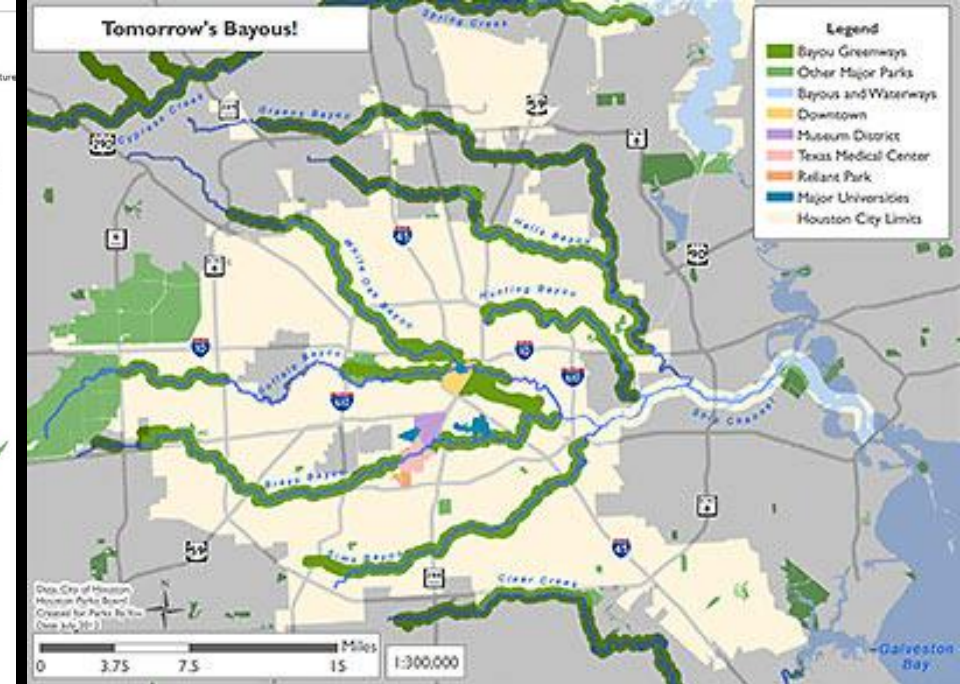
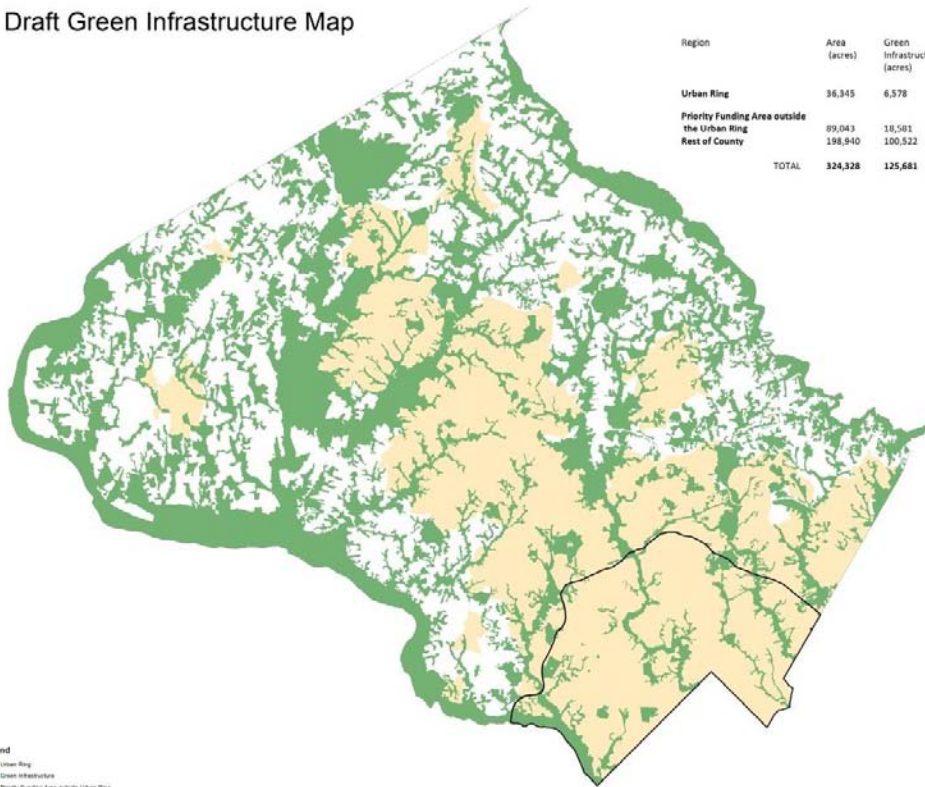


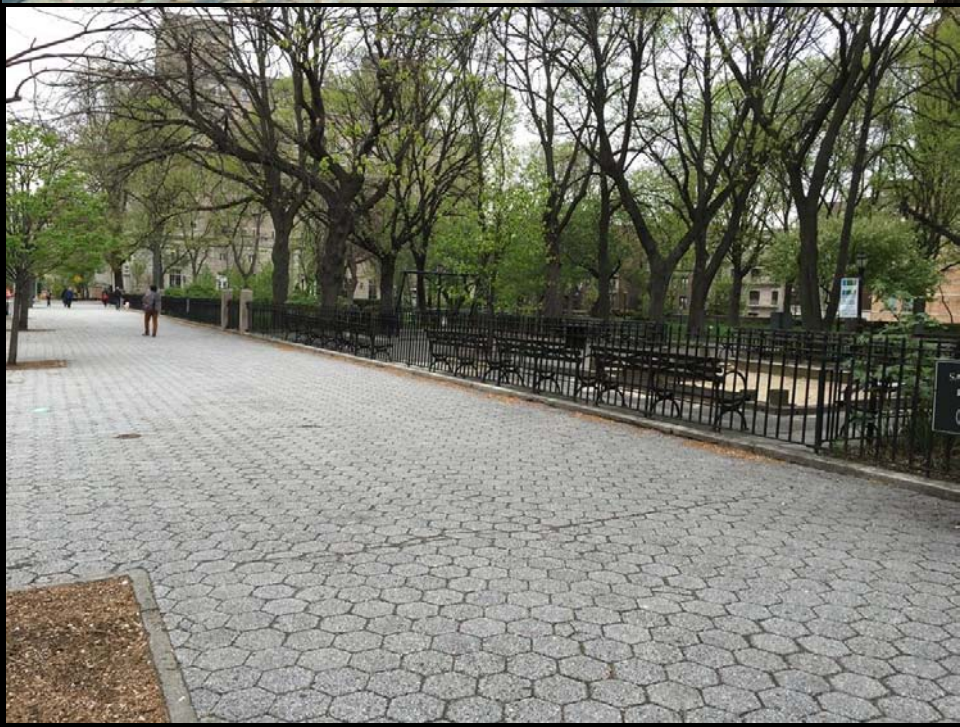
September 26, 2008 City of Portland | Bureau of Planning and Sustainability | Geographic Information System
This map was prepared using data from the City of Portland's Geographic Information System (GIS) and other sources. The City of Portland is not responsible for any errors or omissions in this map. The City of Portland is not responsible for any errors or omissions in this map. The City of Portland is not responsible for any errors or omissions in this map.





Draft Green Infrastructure Map





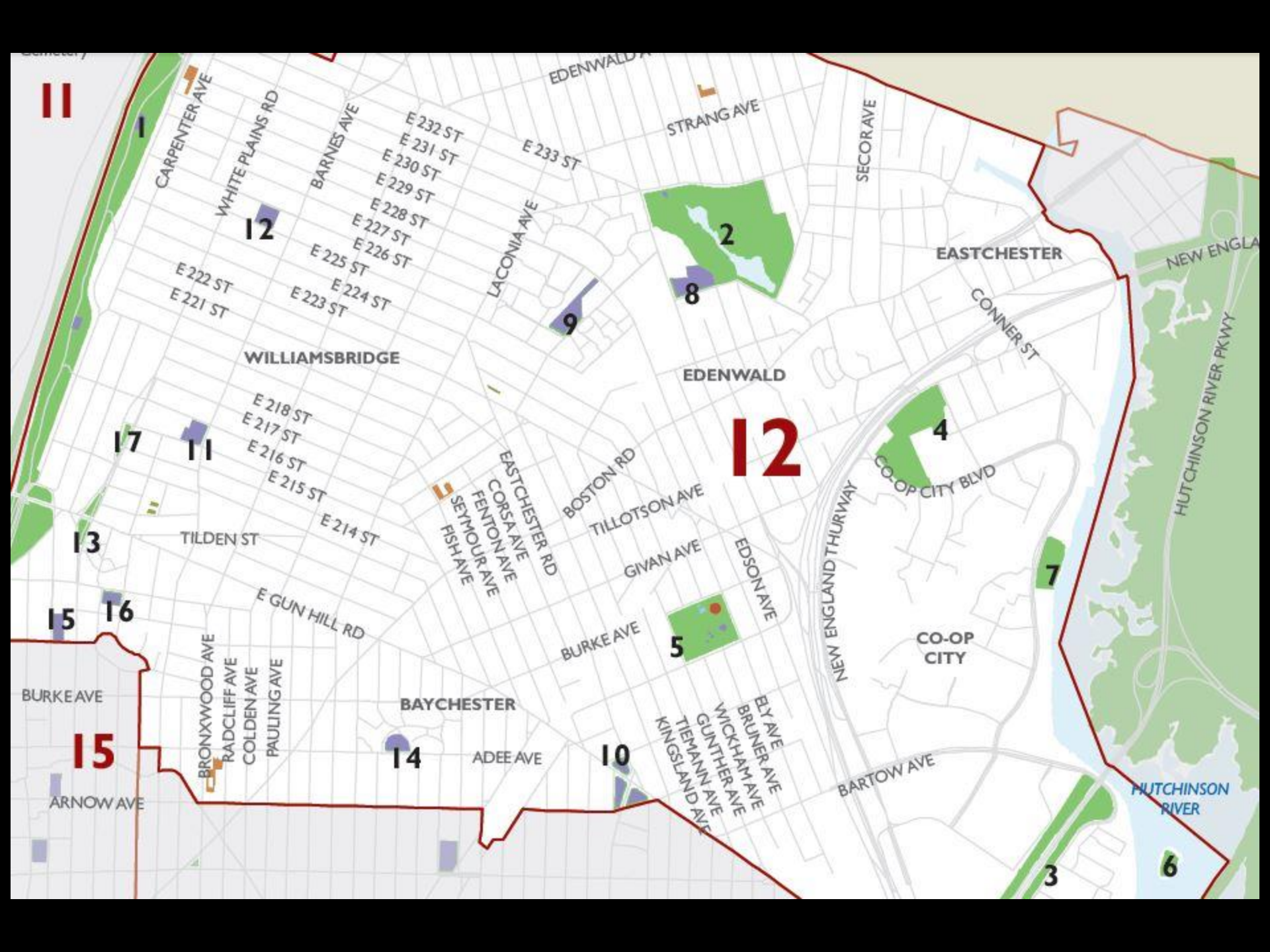












11

1

12

2

8

9

EASTCHESTER

EDENWALD

12

CO-OP CITY

17

11

4

13

TILDEN ST

7

15

16

5

BURKEAVE

BAYCHESTER

15

14

10

ARNOW AVE

BRONXWOOD AVE
RADCLIFF AVE
COLDEN AVE
PAULING AVE

ADEE AVE

ELY AVE
BRUNER AVE
WICKHAM AVE
GUNTHER AVE
TIEMANN AVE
KINGSLAND AVE

BARTOW AVE

3

6

HUTCHINSON RIVER

NEW ENGLA

HUTCHINSON RIVER PKWY

CONNER ST

NEW ENGLAND THURWAY

CO-OP CITY BLVD

CARPENTER AVE

WHITE PLAINS RD

BARNES AVE

E 232 ST
E 231 ST
E 230 ST
E 229 ST
E 228 ST
E 227 ST
E 226 ST
E 225 ST
E 224 ST
E 223 ST

E 233 ST

STRANG AVE

SECOR AVE

LACONIA AVE

E 222 ST
E 221 ST

WILLIAMSBRIDGE

E 218 ST
E 217 ST
E 216 ST
E 215 ST
E 214 ST

EASTCHESTER RD
CORSA AVE
FENTON AVE
SEYMOUR AVE
FISH AVE

BOSTON RD

TILLOTSON AVE

GIVAN AVE

EDSON AVE

BURKE AVE

E GUN HILL RD

BRONXWOOD AVE
RADCLIFF AVE
COLDEN AVE
PAULING AVE

BRONXWOOD AVE
RADCLIFF AVE
COLDEN AVE
PAULING AVE

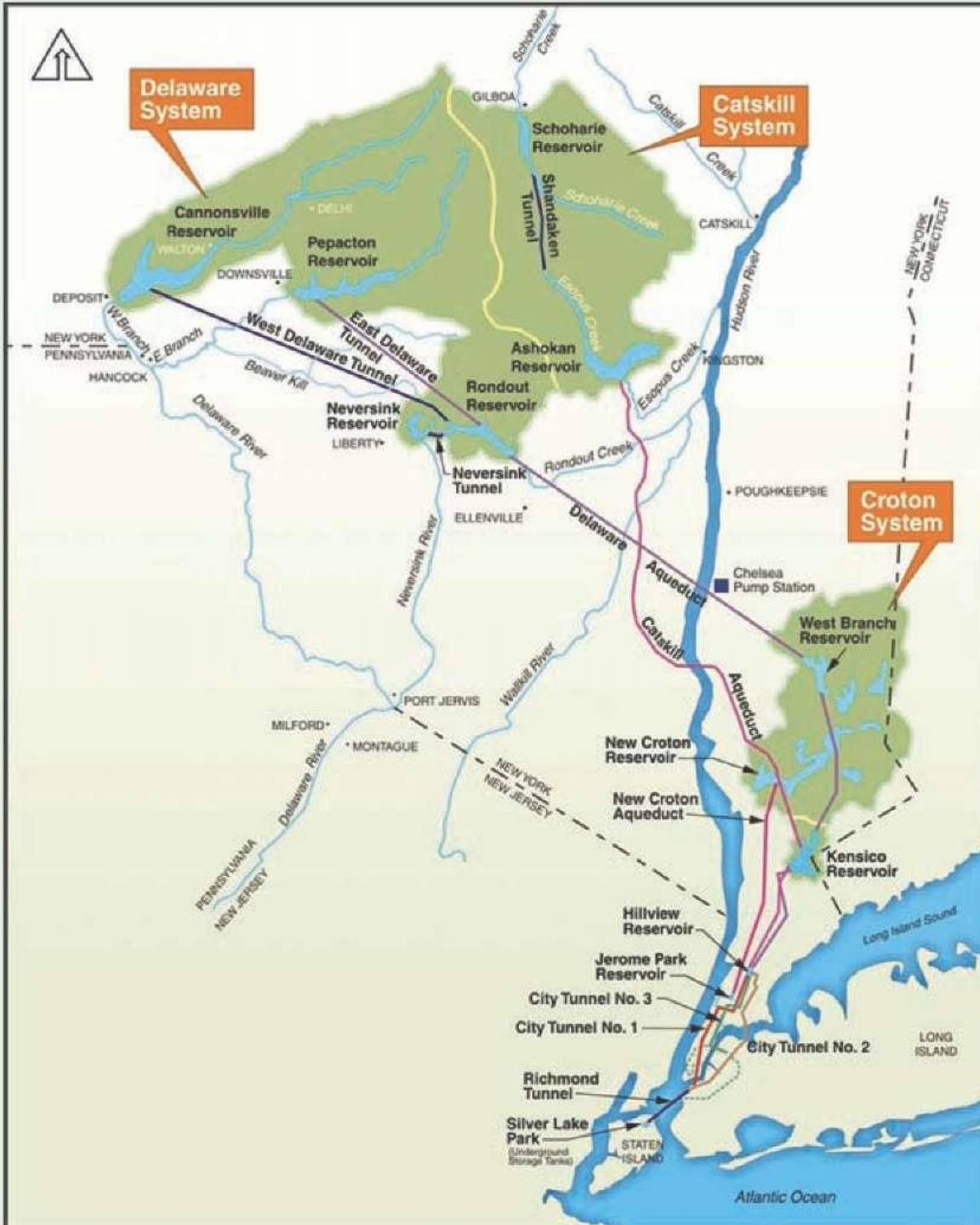




Delaware System

Catskill System

Croton System







Existing Condition



Expanded Esplanade and Ecological Edge

