

Parks Without Borders
Ideas for the Next Generation of Urban Parks and Public Space

ACCESS IS THE NUB OF THE SOLUTION

Charles A. Birnbaum, FASLA, FAAR
President + CEO, The Cultural Landscape Foundation
www.tclf.org



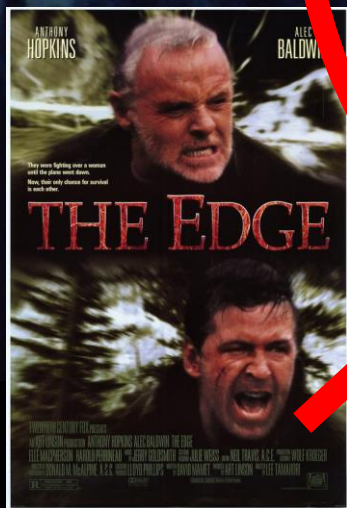


EDGE



MATTERS





The Edge (1997, Thriller) with Anthony Hopkins and Alec Baldwin (screenplay by David Mamet)

COME OVER WHERE I CAN WHISPER—'CAUSE

I Like "SMOOTH" MEN

WHO KEEP PRESENTING LONGER WITH Mennen BRUSHLESS SHAVE CREAM

HERE'S PROOF YOU GET A BETTER SHAVE!

More Dermatologists* Use Mennen Brushless Than Any Other Brushless Shave Cream!

The way she looks at you tonight depends on the way you look to her. So, enjoy that "just-shaved" smoothness all day... be "nice to be with" tonight. Use Mennen Brushless—the shave cream that keeps you presentable longer.

Nationwide surveys show: More dermatologists use Mennen Brushless than any other brand! And who knows more about what's best for your skin than doctors who specialize in skin care? Like you, these doctors want smooth, clean shaves that last.

So, for faster, cooler, more comfortable shaves, change to the choice of experts—Mennen Brushless. See how much smoother, creamier it is and how much easier it is to apply. Get Mennen Brushless Shave Cream today!



IT'S THE MAN AROMA "GROOMER": THE LADIES! Mennen Skin Shave is America's favorite after-shave lotion. You'll like its refreshing, "wake-up" tingle. Try it!

NEWS: OTHER SHAVERS! Creamy, smooth, or Plain or Marshmallow-look? They're all better with whiskers. You're along on wags! See how well it makes your face look and feel.



WHAT ARE YOU GETTING READY FOR?

Whether it's the excitement of leaning in for a kiss, or the anticipation of a big game, Edge shave gel gets you ready for whatever your day has in store. **GET YOUR EDGE.**

LEARN MORE



性感剃须 SHAVE SEXY

NEED A GIFT FOR A HAIRY GUY FRIEND, WET RAZOR OR DRY SHAVERS?

REFRAMING WET SHAVING FROM INCONVENIENT TO SEXY

THE PROBLEM
Due to the inconvenience of wet shaving, 18.3 million Chinese men were switching to dry shavers every year.

THE INSIGHT
Chinese women find wet shaving extremely sexy to watch.

THE SOLUTION
Rather than using athletes, we enlisted on-Japanese AV idol Sora Aoi to post 'unbranded' content on her social media platforms, mobilizing her 13 million adoring fans.

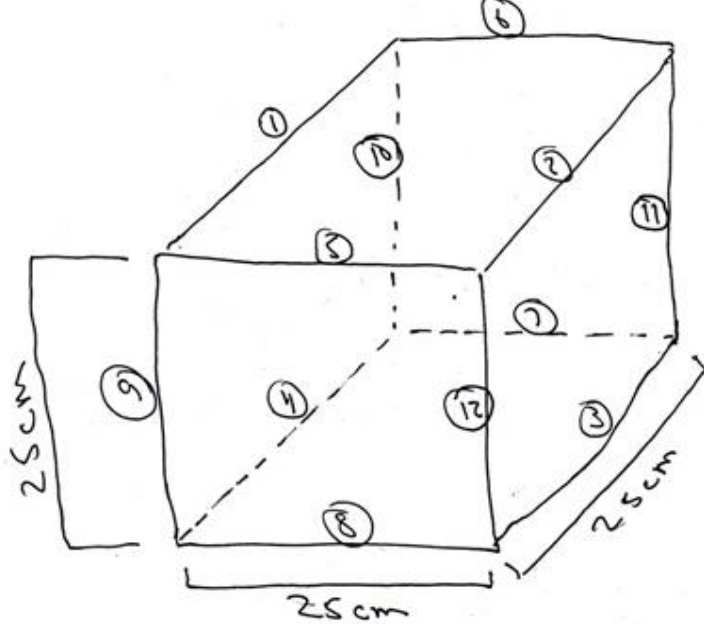
The campaign garnered widespread media attention when she posted a live experiment we conducted, driving men all over the country to get involved.

- RESULTS**
- Campaign reached 187 million
 - 250,000 interaction in Weibo (China's Twitter) alone
 - Stopped sales of 200,000 dry shavers
 - Highest monthly sales in Gillette's history



SORA AOI
SEXY JAPANESE IDOL
13 MILLION FANS ON WEIBO

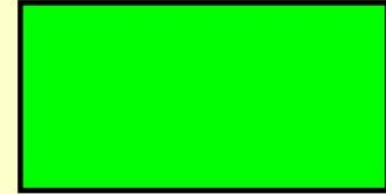
Gillette



What is an **edge**?

An **edge** is the side of the shape.

How many **edges** does a rectangle have?



3



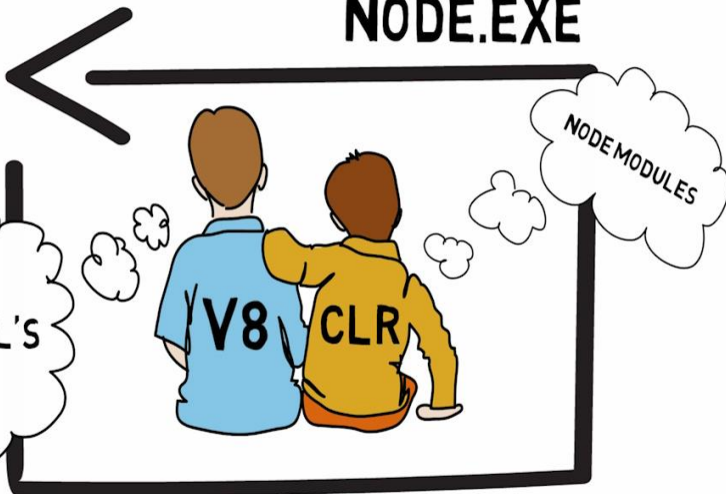
4



2



NODE.EXE



Edge Detection

What is an Edge?

- Edge is a change but every change is not an edge
- Edge is a noticeable or abrupt change
 - E.g.

5	7
---	---

 2 is not a noticeable change in the range of (0 to 255)
- We have to define a threshold if the change is more than a specified threshold then we will define it as an edge point.
- Here gradual change exists you cannot pinpoint where the edge exists so the change must be abrupt

50	55	60	65	70
----	----	----	----	----

- For each pixel we have to look in horizontal, vertical and diagonal direction
 - dx/ds -> for horizontal direction
 - dy/ds -> for vertical direction

50	150	75
10	200	20
25	195	30



It wasn't that long ago . . .

Prospect Park, Brooklyn (1984)

SPECIAL EDITION

ALDO RAY and
LINNEA QUIGLEY
In

DON'T GO NEAR THE PARK

IT'S THE
LAST PLACE
YOU'LL EVER PLAY!

DARK HONEY
FILMS

DVD

ark corner of the city,
ey found light.



AL PACINO KITTY WINN

THE PANIC IN NEEDLE PARK

Release dates 1982 and 1971)



Sorry WE'RE
CLOSED



In his Greensward plan for Central Park, Olmsted indicated that **there should be twenty points of access** (for the 2 ½ mile long park by a 1/2 mile wide) noting, *“it was early deemed appropriate that these entrances be named in some way more appealing to popular imagination than a numerical destination taken from the neighboring streets.”* This nomenclature does not appear until 1865, and it would be another half century until they were “brought to public attention by the Central Park Association’ in its campaign for the restoration of the park.”



THE CENTRAL PARK

The CENTRAL PARK ASSOCIATION



NEW YORK
THOMAS SELTZER
1926

THE
CENTRAL
PARK



THE HISTORIC GATES

THE first annual dinner of The Central Park Association, in the Grand Ball Room of the Hotel Astor on Thursday evening, May 13, 1926, is an Inauguration Dinner of the Chairmen and Vice-chairmen of the eighteen Historic Gates of Central Park. The names of these distinguished citizens of New York, who have joined in the concerted effort to revitalize and rehabilitate Central Park and make it what it should be, the "greatest single work of art in America," are listed in the following pages under their particular and appropriate gate, at which symbolically they stand in command of their sector of defenders, as "Friends of the Park," who are mobilizing in increasing numbers to help advance the cause for which the Association was established.

The quotations under each of the eighteen

[87]

The Central Park Association was organized to "*stimulate and aid the City of New York to restore Central Park to life an vigor.*" (The Olmsted Bros. were consultants to the Assoc.)

SCHOLARS' GATE



WOMEN'S GATE



Chaired by Mrs. Guggenheim, committee included
Edna Ferber and Mabel Parsons

HUNTERS' GATE



HUNTERS' GATE

EIGHTH AVENUE AND SEVENTY-NINTH STREET

Chairmen


Theodore Roosevelt
Kermit Roosevelt

“The vocations which are followed by men who find in untamed and uncultivated nature a suitable field of action, are so various, that they require to be grouped under several distinct heads.

“Thus we have the ‘Hunter’ and the ‘Fisherman,’ both individual pursuits that contribute largely to the wants of the community.”



"A Secret Section of Central Park Reopens," **The New York Times**, 10 May 2016 by James Barron. (Above: A new rustic gate at the entrance to the Hallett Nature Sanctuary). Not since the 1930s has this section of the park been open regularly.



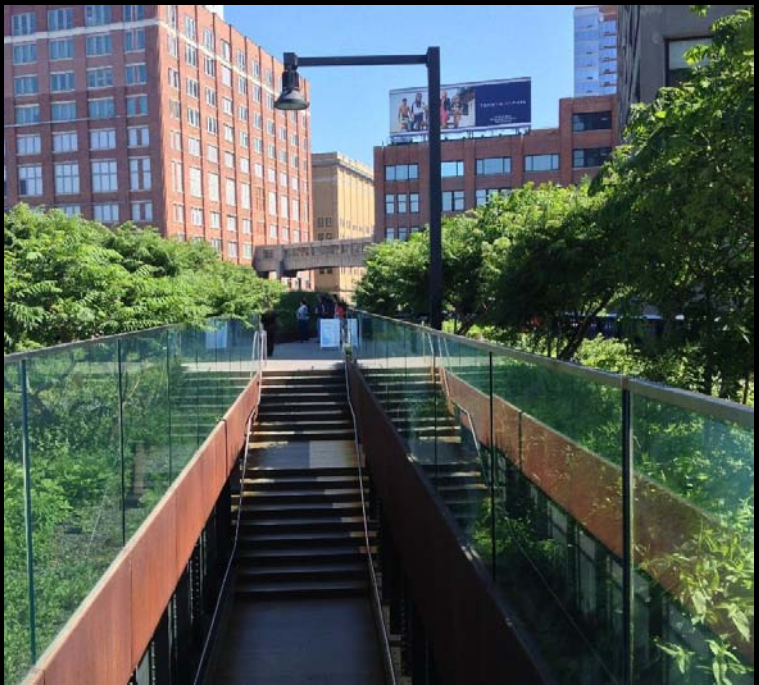
**ACCESS IS
THE NUB
THE SOLUTION**

WHY NOW?





- Park Entrances:**
 Gansevoort Street and Washington Street (elevator access)
- 14th Street (elevator access)
 - 16th Street (elevator access)
 - 18th Street
 - 20th Street
 - 23rd Street (elevator access)
 - 26th Street
 - 28th Street
 - 29th Street (elevator access)
 - 30th Street
 - 34th Street (ramp access) - open 7 a.m. to sunset





PROXIMITY

The Modern Classic. onprospectpark.com

Redefine your perceptions of a modern classic. At the gateway to Prospect Park and Brooklyn Botanic Garden, architect Richard Meier introduces his first residential project to the heart of Brooklyn. These iconic residences will set a new precedent in living.

From \$790,000 to \$6,000,000. Please register online or call us at the sales gallery 718 230 7905.

Developer: SDS Proclida Development Group & Gordon Group Holdings
Design Architect: Richard Meier & Partners Architects LLP
Exclusive Marketing and Sales Agent: Corcoran Group Marketing

The Modern Classic. onprospectpark.com

MATTERS

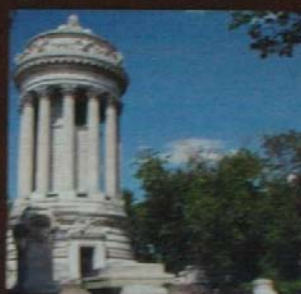
Richard Meier
On Prospect Park

The New York Times, September 10, 2006

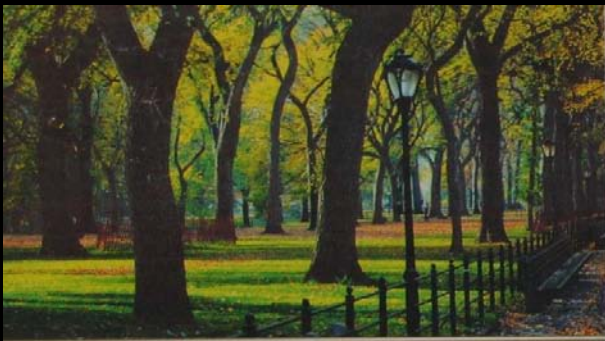
The complete offering terms are in an offering plan available from Sponsor, File No. 03-25-0147. Sponsor: Severnham Development LLC. We are pleased to the letter and the spirit of U.S. policy for the achievement of equal housing opportunity throughout the United States.



LIVE NEXT TO A PARK!



How to live in Manhattan.



The Setting.

View our newly completed, stunningly remastered three-bedroom condominium residences in a pre-war landmark building with boutique hotel services, steps to Central Park.

and needs that give texture to then he died" — are most ac out that X can't exist, despit lar; whereas Y, so imperious i office. It is as if we have com only when it is written up as feet, ceiling heights and the

It is as if we h understand sp value only whe up as an archi

George Sand once said whether they aspired to live time, more uncertain in so system was still rigidly into domains as no more than a nation. These days, witho increasingly buffeted sense o home — whether cottage o to count for too much and ment to our having passed t property and the unbounde currently informs so much understood as a grandiose insignificance than as a genu no more landlords of our f have increased our sense of b

A Park to Call Your Own.

8 | UNION SQUARE SOUTH



You Demand

LESS THAN 3 BLOCKS FROM CENTRAL PARK



QUALITY
LOCATION
VIEWS
SOPHISTICATED
VALUE

Are you demanding? Critical? Fussy? Good. That's how you got to where you are. Your next uncompromising step? We suggest the luxury of The Hudson Condominiums.

This modern, glass structure stands at the center of the Upper West Side's best shopping, restaurants and cultural venues. Best of all...it's only two blocks from the Hudson River esplanade and less than three blocks from Central Park. So don't ask. Demand. The Hudson Condominium—location is luxury.

- 1 BRs from \$725K
- 2 BRs with walls of glass from \$1.15M
- 3 BRs & Penthouses with private roof deck, fireplace, greenhouse & views from \$2.5M

IMMEDIATE
OCCUPANCY



Exclusive Sales and Marketing Agents:
THE DEVELOPERS GROUP

HALSTEAD PROPERTY
DEVELOPMENT MARKETING

888.480.9833
theHudsonCondo.com

OPEN HOUSE SUN 1-4PM & TUES 5-7PM (BY APPT)
On-Site Sales Office & Furnished Model Residence:
225 West 60th Street, New York, NY

This is not an offering. The complete offering terms are in an offering plan available from the sponsor. File #C005-0007.

GRACIOUS LIVING ON CENTRAL PARK SOUTH

An enchanted life beckons you home on Manhattan's dream boulevard at 110 CPS. A lavish Concierge menu by Abigail Michaels serves up life's delicacies upon a moment's notice. Central Park breezes whisper through an exquisitely landscaped private garden that leads into an elegant Dining lounge where celebrity chef David Burke provides distinctive private catering. And in a perfect complement to this sublime lifestyle, Exhale Spa's Wellbeing services await residents as well as a state-of-the-art Fitness Center.

PRE-WAR LAYOUTS WITH STYLISH INTERIORS

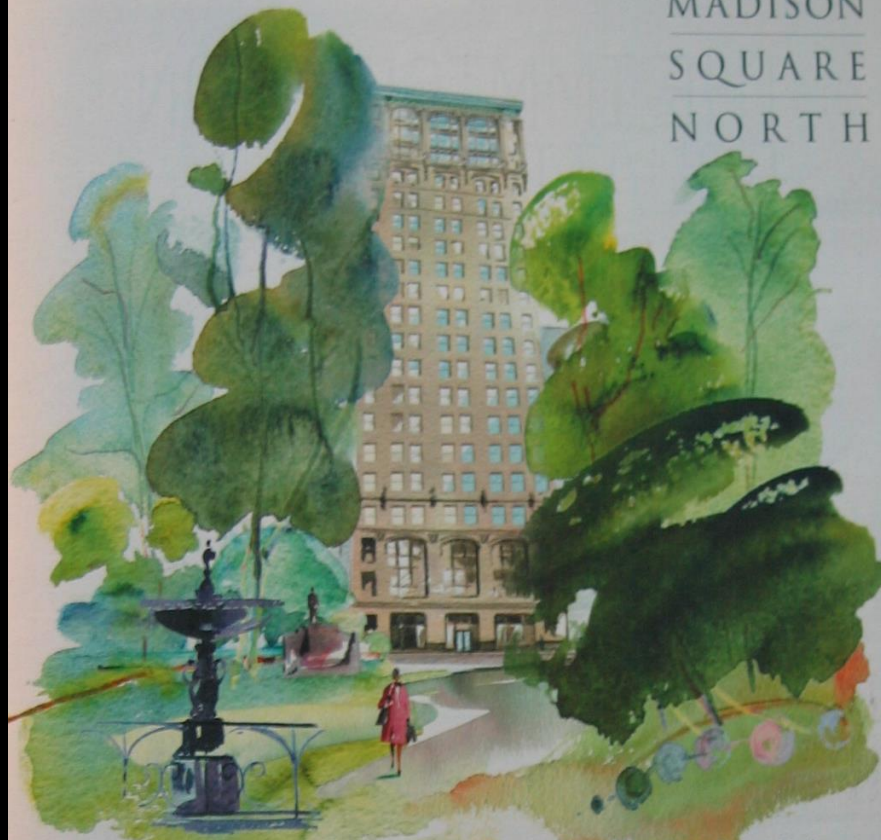
110
CPS



212.974.0110 WWW.110CPS.COM

Immediate occupancy. 1 to 4 bedroom residences priced from \$1,440,000.
Another exceptional development by Anbau Enterprises, Inc.
Exclusive Marketing and Sales Agent: The Sunshine Group, Ltd.
Sales and Design Center: 110 Central Park South, New York, NY 10019

FIFTEEN
MADISON
SQUARE
NORTH



Grand 2, 3, and 4 Bedroom Loft Condominiums at the Top of Madison Square Park.

Custom-Designed Homes by Nathan Egan Interiors.
Finishes by Arclinea, Waterworks, and The Nanz Company.

Priced from \$2.625M to over \$5.7M. Maid's Rooms Available.

A PREMIER ADDRESS. A CLASSIC PARK. THE PERFECT POINT OF VIEW.

PANORAMIC PARK & CITY VIEWS • FITNESS CENTER BY CLAY • ABIGAIL MICHAELS CONCIERGE • CHILDREN'S PLAY
OUTFITTED BY KIDDING AROUND • INDIVIDUAL WINE STORAGE BY MORRELL & CO. • SOARING CEILINGS • ROOF

212.696.1526

www.15madisonsquare.com

EXCLUSIVE MARKETING & SALES AGENT: CORCORAN GROUP MARKET
DANIEL GOLDNER ARCHITECTS

The complete offering terms are in
an offering plan available from the
Sponsor. File No. CD# 05-0409



A WALTER & SAMUELS DEVELOPMENT WITH



A Member of the Deutsche Bank Group

45 Park Avenue



IF YOUR DREAMS HAD AN ADDRESS...
45 Park Avenue

Sales Office: 90 Park Avenue, 2
212.616.4500 www.45parkave.com

Live the Dream

THREE BEDROOM CONDOMINIUMS







*East River Esplanade 81st Street Bridge
"Prison Bridge" Design Under Fire
[A Walk in the Park Blog_12/14/2014](#)*

*View from Carol Shurtz Park to East River Esplanade
(After, left; before, below, left and right)*



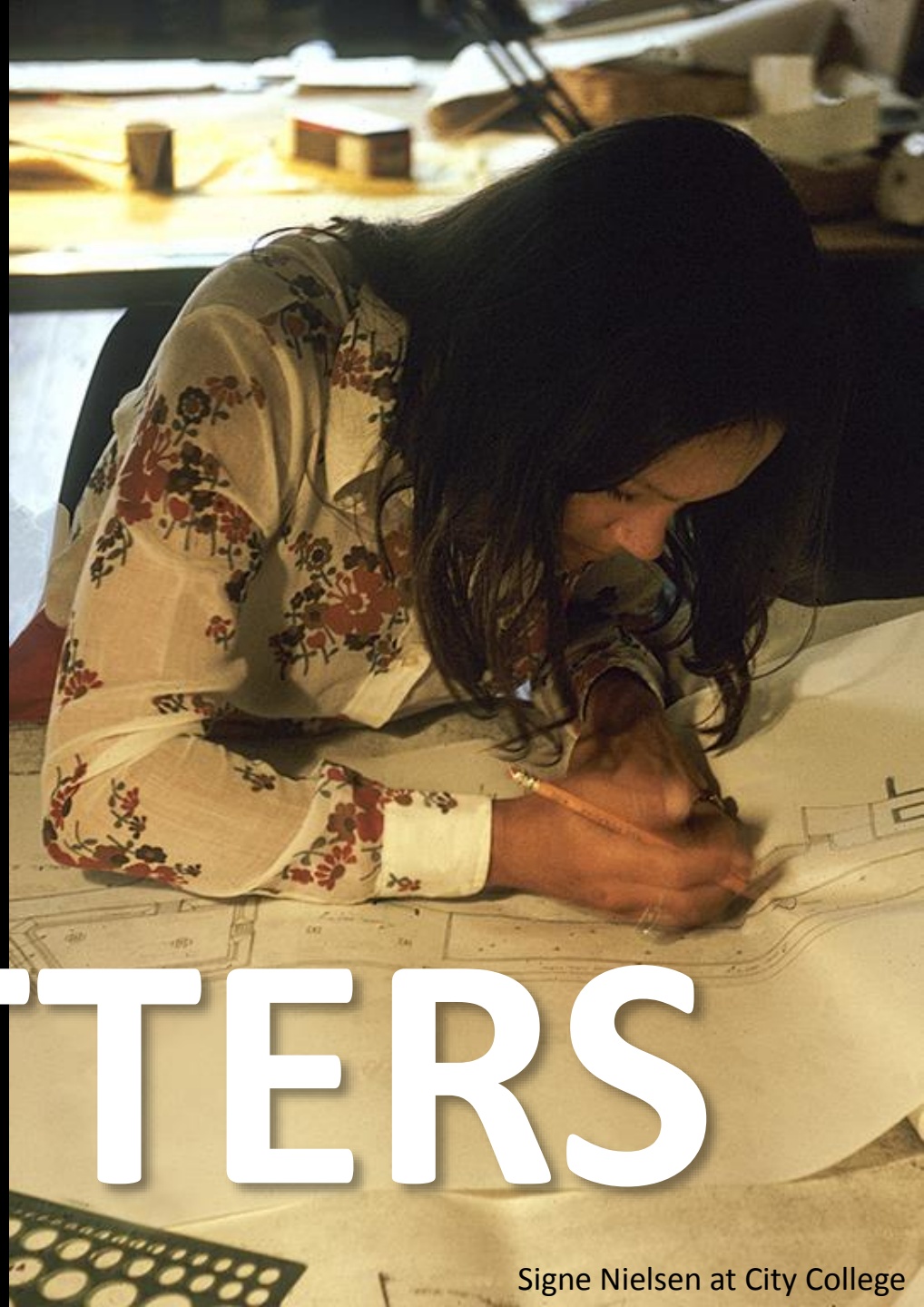
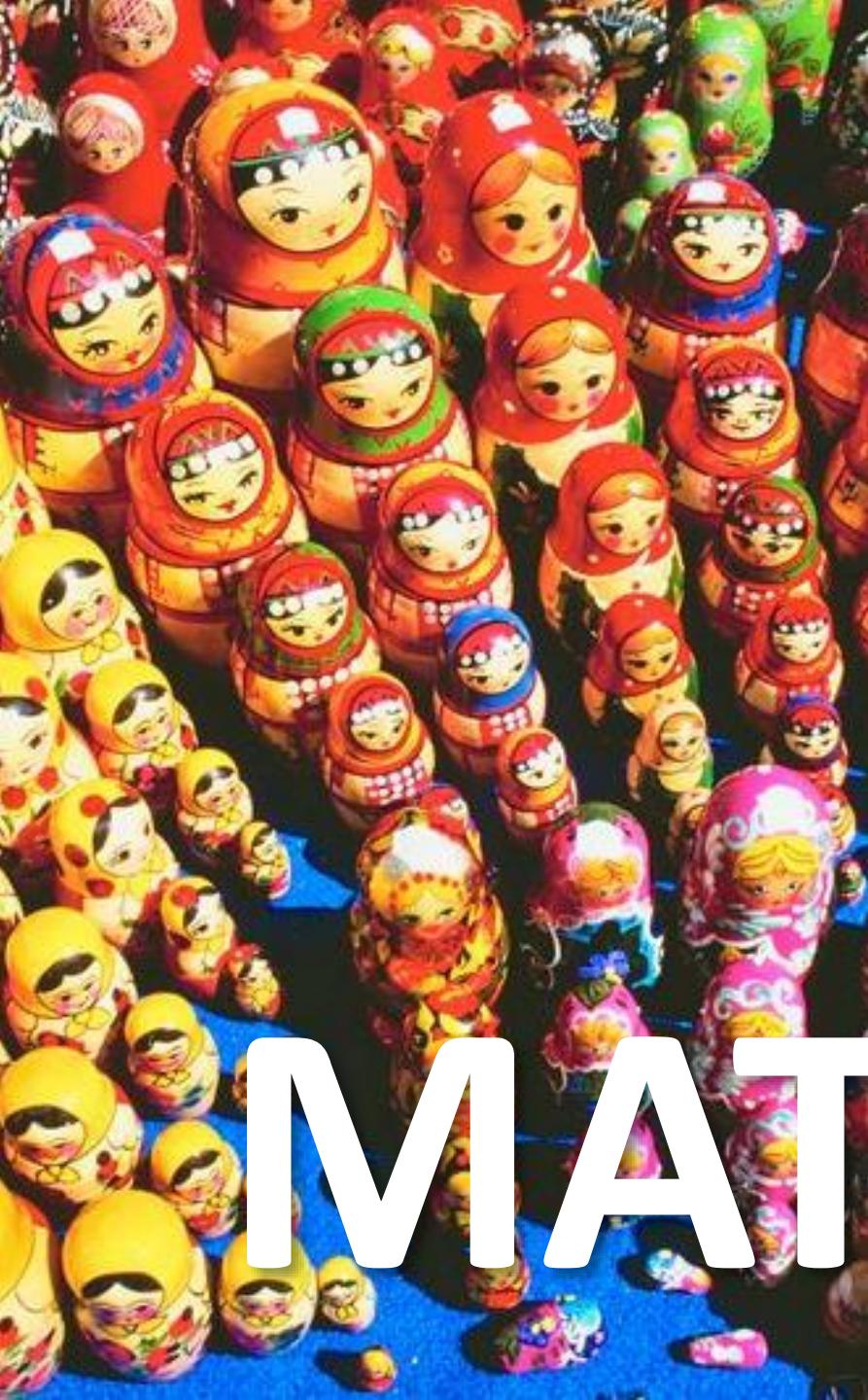
An aerial photograph of Central Park in New York City, showing the dense greenery of the park surrounded by the city's skyscrapers and buildings. The Hudson River is visible on the left side of the image.

If access is the nub
of the solution...

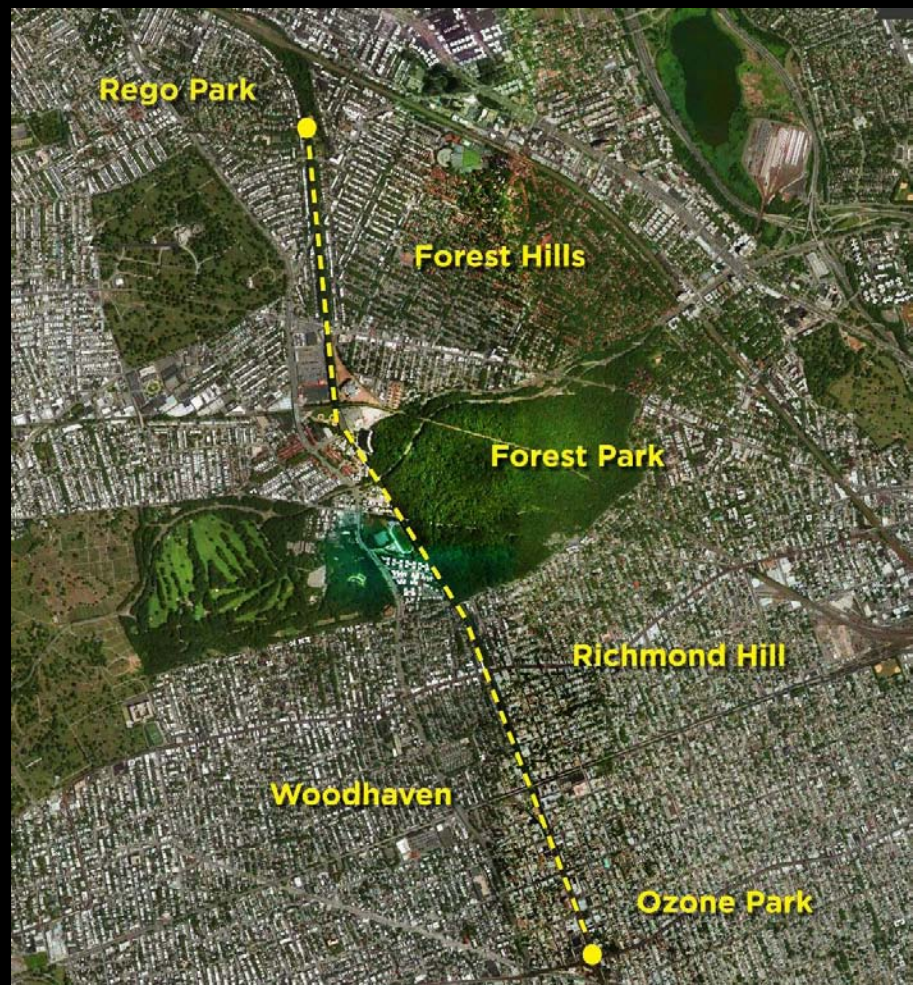
*How do we
leverage edge?*

CONTEXT





MATTERS



CONTEXT + AUTHENTICITY MATTERS: The Lowline, underground, lower east side (top left) Randall's Island Connector (NY Restoration Pjct) several routes to access Randall's Island (just unveiled bottom) and the Queensway – 3.5 miles of abandoned rail led by The Trust for Public Land (right).

A walkway on Seattle's waterfront will have translucent blocks over a natural shallow habitat for juvenile salmon, to let light through for the fish. Photo: James Corner Field Operations



Find what is authentic, build on it: “Every place has a history, a culture, connections to the city around it,” Mr. Corner says. Don’t demolish it. Find what is authentic and celebrate it.

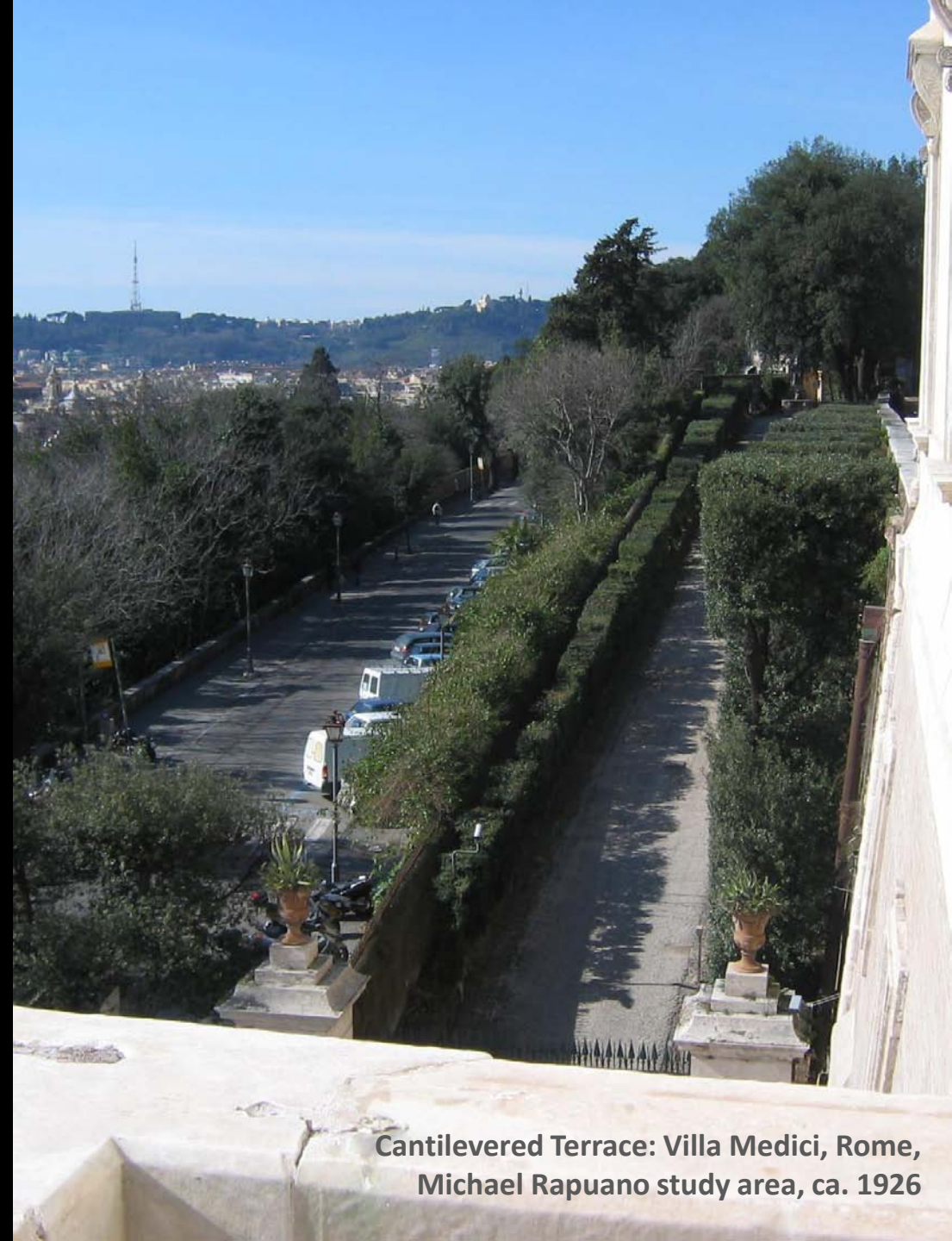
James Corner, quoted in, *“How Cities Can Revitalize Their Public Spaces: The High Line’s lead designer, landscape architect James Corner, gives his secrets for creating great places to live and visit”* Wall Street Journal **24 April 2016**



**Cantilevered Terrace: Brooklyn Promenade
designed by Clarke & Rapuano**



**Historic District
designated (1965)
Emphasis on architecture/
engineering thru 1899**



**Cantilevered Terrace: Villa Medici, Rome,
Michael Rapuano study area, ca. 1926**

CRITICAL EYE

NEW YORK CITY

The Brooklyn Bridge Deserves a Scenic View District of Its Own

Wednesday, July 8, 2015, by Alexandra Lange



The New York Times

1. 2. 3. 4. 5. 6.

ART & DESIGN

MoMA's Proposal for Sculpture Garden Pleases and Riles

By NINA GOLDSTEIN FEB. 4, 2014

Peace and quiet can be hard to come by in the middle of Manhattan. Maybe, if the ice ever melts, you might balance a lunch basket on your lap in the sunken plaza outside the McGraw-Hill Building. Or park yourself in a hotel lobby and pretend to be a guest.

But for many people the oasis of choice has long been the sculpture garden at the Museum of Modern Art, a soothing half-acre of stone fountains and sprawling fountains that provides a brief respite from the madness of Midtown.

For a price.

Access to the garden required a \$25 admission to the museum.

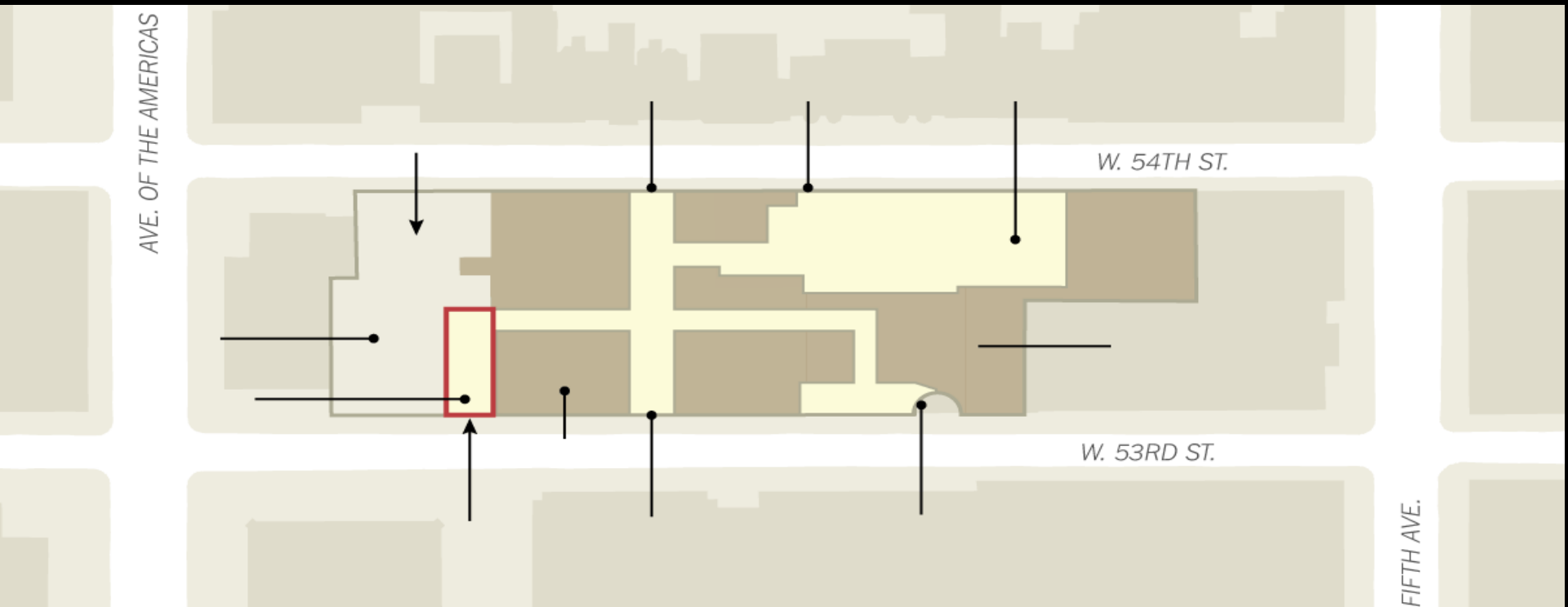
Now, though, as part of an expansion plan, the museum is talking about opening the gates to the sanctuary for no charge, a prospect that some find positively horrifying.

"The idea that you lay your giant parcel and walk in off the street is, I'm sorry, just not the same," said Hugh Landwehr, a scenic designer who was enjoying the garden the other day.

"It's a ludicrous idea," said the landscape architect Michael R. Van Valkenburgh. "They fail to understand what's brilliant about the garden and what makes it great — their cloistered isolation."

MoMA announced the plan last month, partly to help mitigate its widely unpopular decision to demolish a neighbor, the former American Folk Art Museum, as part of its expansion.

But the garden proposal has generated its own controversy. Some applaud opening up what is officially known as the Abby Aldrich Rockefeller Sculpture Garden as a step in a more populist direction for an institution often accused of being cold and imperious. Others envision spring break invading the space of Mattress, Giacomini and Man.





Philip Johnson, in an interview in the 1994 book, *Philip Johnson: The Architect in His Own Words*. On the MoMa garden notes:

Question: "Is [the garden] at its best when there are very few people in the garden or when there are a lot?"

Answer: Johnson replied: "It's better to have a few, of course, because then you get the feeling of the space . . . "You need a place to relax after looking at the artwork. You're so relieved that there is no painting to focus on."

Freeway Park, Seattle, WA



Freeway Park,
Seattle, WA















Edge Matters

1. Make More Porous

Break the Edge

2. Connect and Extend

Think System or Network

3. Put a Cap on it

Create the Connective Tissue



MAKE POROUS



BROOKLYN
HISTORICAL
SOCIETY

A quest for a **CIVIC SOLUTION** that is a dignified, clear and accessible arrival experience.



Edge Matters:

1. Make More Porous, Break the Edge

Bryant Park, NYC, NY
Hanna/Olin (completed in 1992)



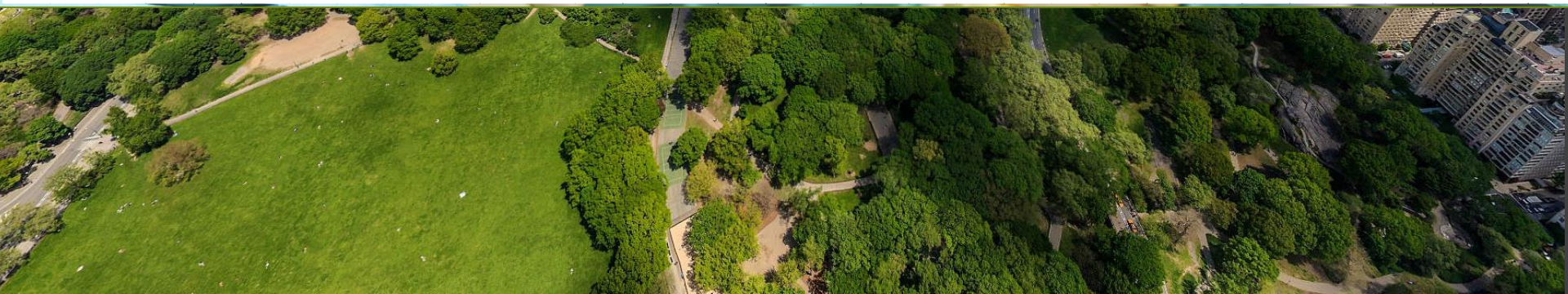
Lincoln Center, NYC, NY
Diller Scofidio + Renfro (2002-2013)

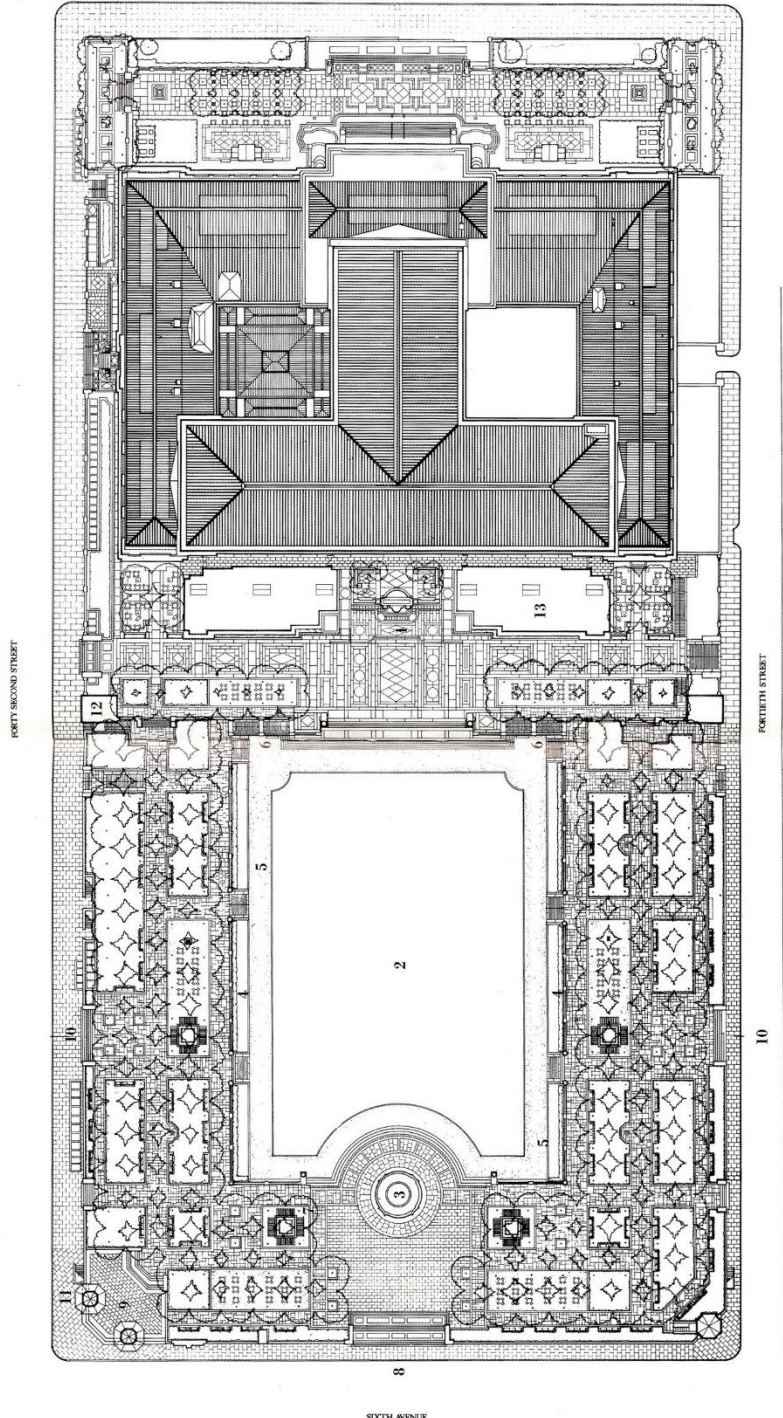


Grand Park, Los Angeles, CA
Rios Clement Hale (first two blocks in 2012,
new playground 2014)



Discovery Green, Houston, TX
Hargreaves Associates (opened in 2008,
revisions to edge underway)





Bryant Park, NYC, NY Hanna/Olin (completed in 1992)



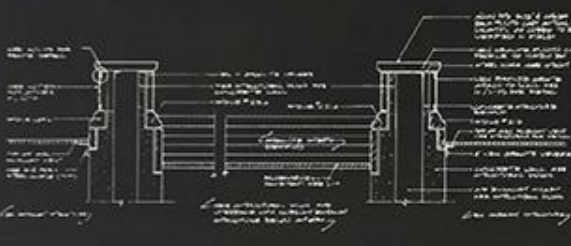
Laurie Olin suggested **simple yet effective** changes to the site, such as removing iron fences and understory plant materials to make the space more *physically* and *visually* accessible.

"Access is the nub of the solution," wrote Holly Whyte. Using Whyte's report as a guide, Hanna/Olin was engaged thirty years ago to create a design that would transform the park into a safe and vibrant urban nexus.

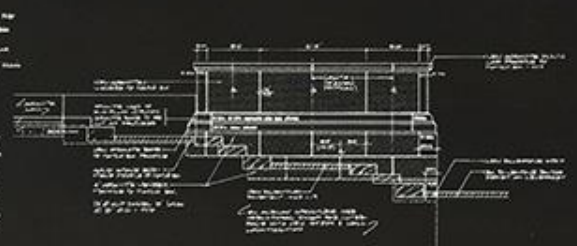
Olin modified and introduced entrances, ramps, stairs, and pavements while cutting through walks and railing to configure free circulation.



42nd Street Entrance
North Elevation
Scale: 1/4" = 1'-0"



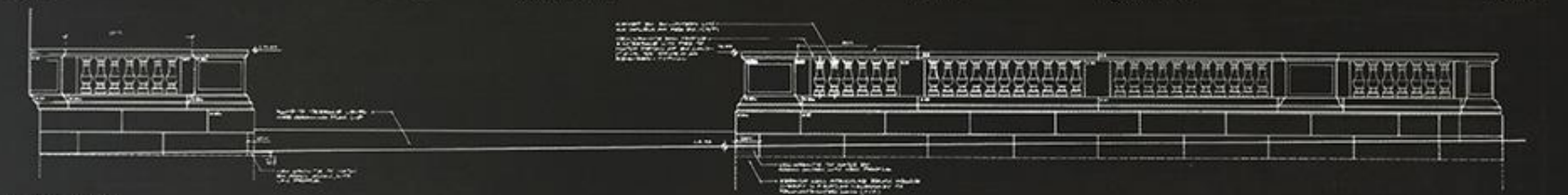
42nd Street Plinths
Section
Scale: 1/4" = 1'-0"



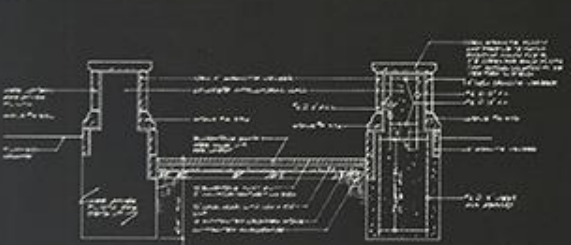
42nd Street Stairway and Plinth
Section/Elevation
Scale: 1/4" = 1'-0"



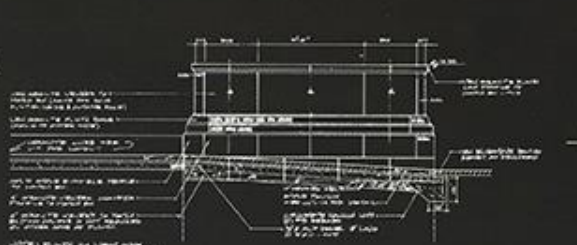
42nd Street Plinth
Section/Elevation
Scale: 1/4" = 1'-0"



46th Street Entrance
South Elevation
Scale: 1/4" = 1'-0"



46th Street Plinths
Section
Scale: 1/4" = 1'-0"

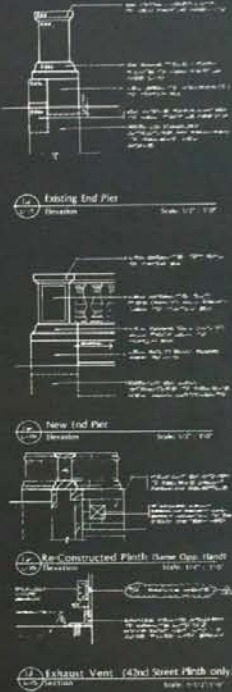
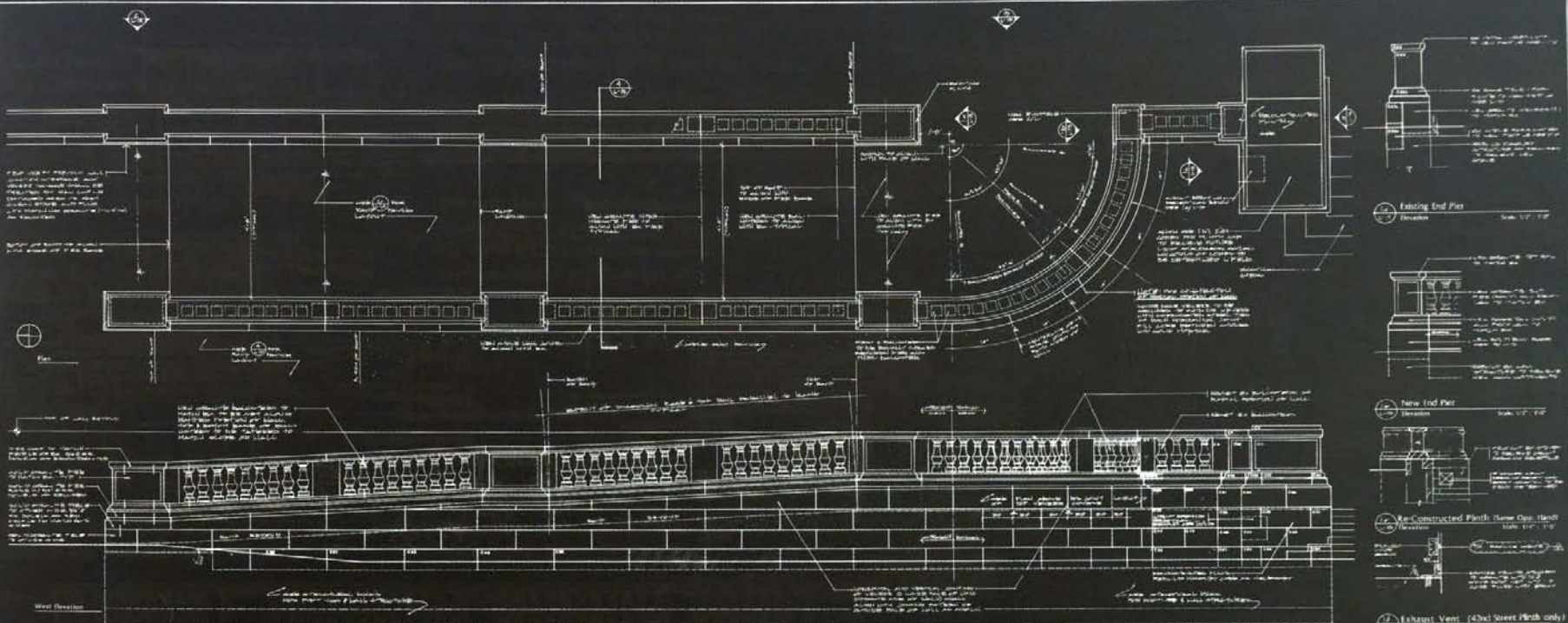


46th Street Trade Entrance
Section
Scale: 1/4" = 1'-0"

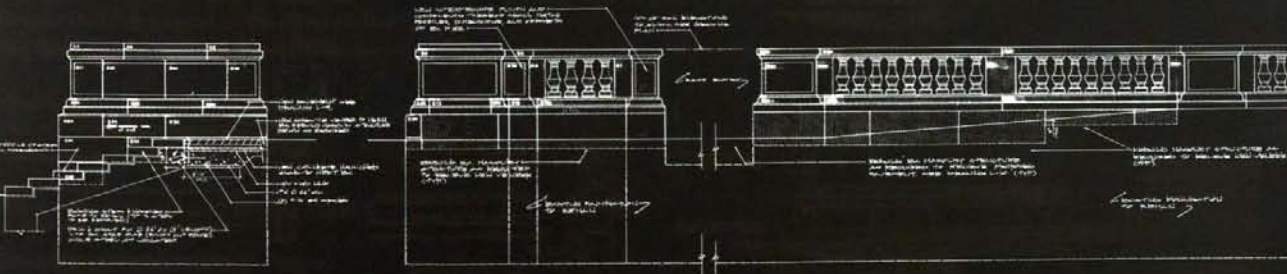


Rebuilt Wall
Section
Scale: 1/4" = 1'-0"

- Legend**
- Existing stone to be kept
 - Existing stone to be fabricated to new profile as indicated per drawing L&K and notes
 - New stone to match profile of existing, to be set as indicated
 - Facing balustrade to be reset according to original details
 - Actual dimension to be determined by existing stone size
Construction to verify
- General Notes**
1. See sheet L&K for stone distribution of original repair at base/level wall.
 2. All stone, dimensions and stone profiles determined in the shop shall be tested prior to construction. Any necessary tests shall be determined by contractor and submitted to architect for review.
 3. See specifications for materials and methods of construction.
 4. Provide anchors, supports, bracing or other attachments necessary to secure stone work in place.
 5. See structural drawings for all concrete work and steel reinforcement specifications.

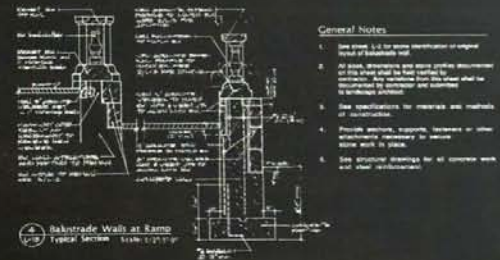


Center Balustrade Wall at Ramp (Symmetrical toward south side of stairway)
Plan Elevation



Re-Constructed Plinth at Library Terrace Steps
Elevation

Balustrade Wall at Ramp
West Elevation



- Legend**
- Existing masonry to be reset
 - Existing masonry to be fabricated to new profile as indicated per drawing L-16 and reset
 - Existing balustrades to be reset according to original details
 - New masonry to match profiles of existing to be set as indicated
- General Notes**
- See sheet L-12 for stone installation or granite finish of balustrade wall
 - All steel balustrades are steel profiles dimensioned to fit the wall to be reset. All steel balustrades shall be installed by contractor and contractor shall be responsible for fit.
 - See specifications for materials and methods of construction.
 - Provide anchors, supports, brackets or other hardware as shown.
 - See structural drawings for all concrete work and steel reinforcement.

BRYANT PARK
RESTORATION AND IMPROVEMENTS
NEW YORK PUBLIC LIBRARY
BRYANT PARK RESTORATION CORPORATION
NEW YORK DEPARTMENT OF PARKS AND RECREATION

LANDSCAPE ARCHITECT
THOMAS YIP, LLC
200 CHURCH STREET
NEW YORK, NEW YORK

INTERIOR DESIGNER
ROBERT BENTON & ASSOC.
300 CHURCH STREET
NEW YORK, NEW YORK

STRUCTURAL CONSULTANT
ARCHITECTURAL SPECIFIC ASSOC.
60 NEW STREET
NEW YORK, NEW YORK

SEE CIVIL DRAWINGS
DAVID H. LIVING & ASSOC.
ONE WALL STREET
NEW YORK, NEW YORK

SEE LIGHTING DRAWINGS
HOWARD BRONSTEIN LIGHTING DESIGN
110 WALL STREET
NEW YORK, NEW YORK

REVISED BID SET - NOT FOR CONSTRUCTION					1/16/14
Central Balustrade Wall Details					
Sheet No.	Project No.	Date	Job Name	Scale	
L-16	100-0100	1/16/14	BRYANT PARK	AS SHOWN	

Construction drawing for disabled access ramp, railings, and stair (Olin Partnership)

*“Once the construction is done, the campus will be **more porous** and **more inviting** to the neighborhood. Partly that means making it easier to **tell what’s going on and where.**”*

The New York Times / Editorial -- Opinion Page
September 16, 2008



Lincoln Center, NYC, NY
Diller Scofidio + Renfro (2002-2013)



Lincoln Center,
NYC, NY
(Before)



Lincoln Center, NYC, NY
(Before)



Lincoln Center, NYC, NY (After)



At Lincoln Center, “the architects graft additions that grow from the original concepts into unexpected hybrids. But they are not just making formal alterations to give the institutions an image makeover; the additions are helping to update the culture of the institutions themselves, broadening their programs, democratizing their identities, renewing their very missions. Architecture is the can opener for these closed containers, creating a more porous and interactive relationship between the city at large and institutions that ultimately prosper in the open.”

Justin Davidson,
New York Magazine

Lincoln Center, NYC, NY (After)



Grand Park, Los Angeles, CA
Rios Clement Hale (before)



Grand Park, Los Angeles, CA Rios Clemente Hale *(After)*

Pedestrian circulation was improved with the implementation of a diagonal cross axis within the park, not to mention new ramps, an elevator that serviced the street, plaza and garage levels, additional pedestrian entrances and enhanced signage.

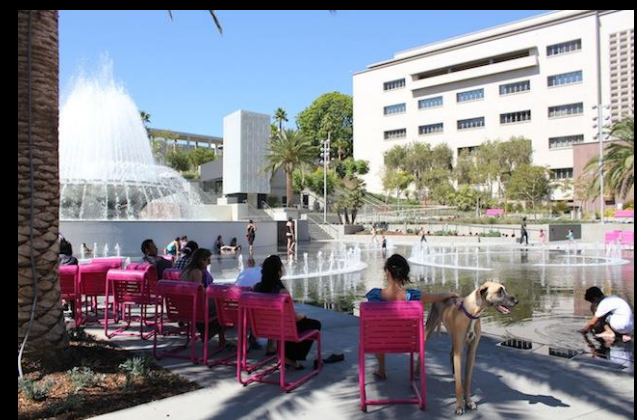


SITE PLAN

0 200 FT.
60 M.

- | | | | |
|--|------------------------------|------------------------------|-----------------------------|
| 1 ENTRANCE RAMP | 6 COMMUNITY TERRACE | 11 CITY HALL | 16 HALL OF ADMINISTRATION |
| 2 ELEVATOR | 7 CENTRAL STAIRS | 12 DOROTHY CHANDLER PAVILION | 17 HALL OF RECORDS |
| 3 FOUNTAIN AREA | 8 EVENT LAWN | 13 AHMANSON THEATRE | 18 LAW LIBRARY |
| 4 STARBUCKS, RESTROOMS, AND PARK SUPPORT | 9 RESTROOMS AND PARK SUPPORT | 14 MARK TAPER FORUM | 19 CRIMINAL COURTS BUILDING |
| 5 PERFORMANCE | 10 PARK ENTRY | 15 COUNTY COURTS | |





Grand Park, Los Angeles, CA
Rios Clement Hale (After)



Discovery Green,
Houston, TX
Hargreaves
Associates
(Before)



The site of former
surface parking
lots, the 10 acre
site spurred a
wave of
construction along
its borders.



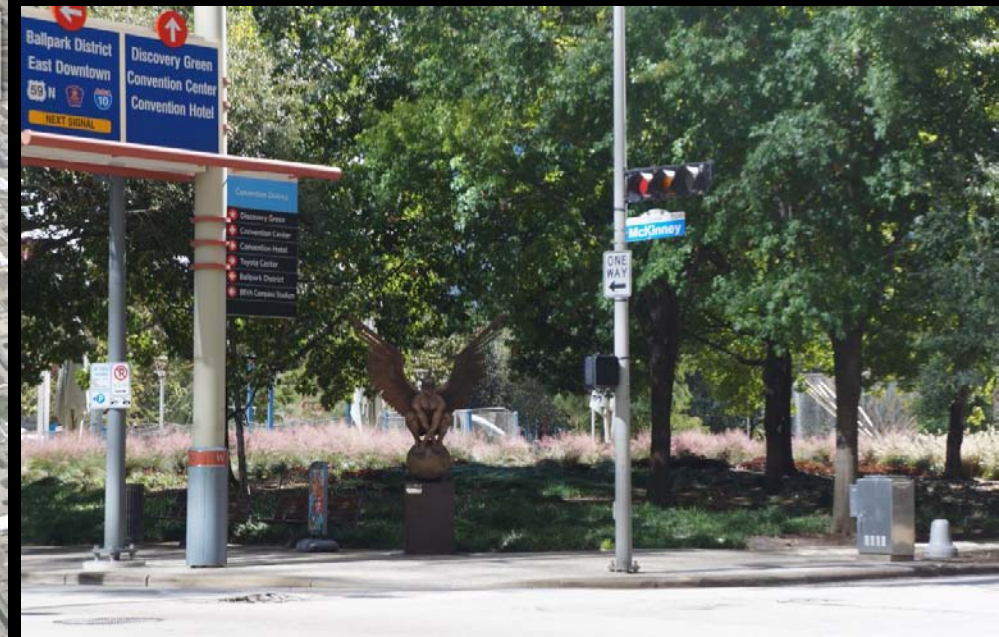
Discovery Green, Houston, TX, Hargreaves Associates *(After)*



Discovery Green, Houston, TX, Hargreaves Associates
(After)



Discovery Green, Houston: A catalyst for new construction – and now, a quest for increased porosity



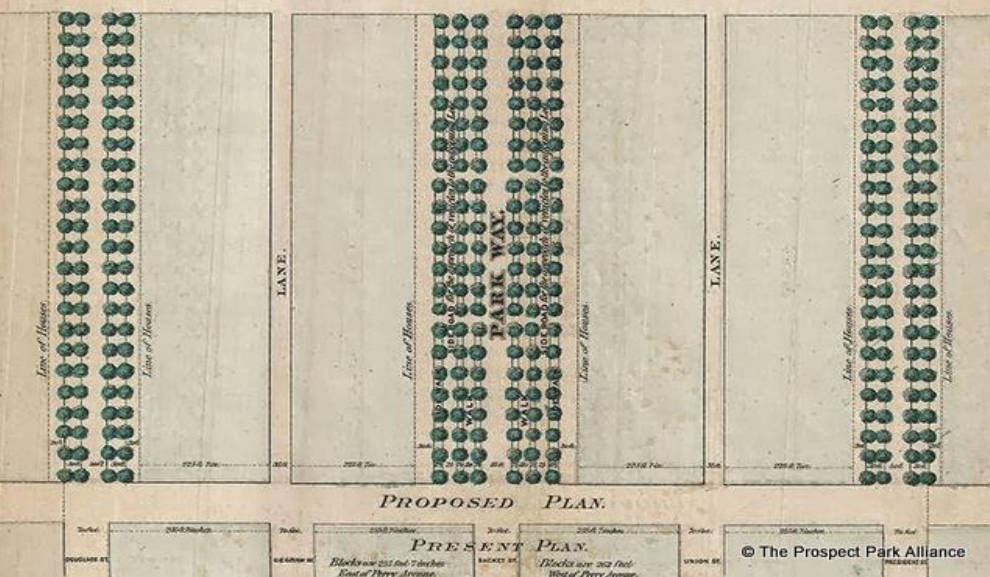
Discovery Green, Houston: A catalyst for new construction – and now, a quest for increased porosity

CONNECT/EXTEND



CITY OF BROOKLYN.

PLAN OF A PORTION OF **PARK WAY** AS PROPOSED TO BE LAID OUT
FROM THE EASTERN PART OF THE CITY
TO
THE PLAZA.



“Olmsted continued to advocate the use of drives and boulevards to link parks into an entire system that would also define different parts of cities like Seattle, Boston and Minneapolis and give them structures around which to organize. . .”



“Whatever little success designers had with these plans, once a site was selected, its almost invariably peripheral location required that primary attention be given to street connections.”

Galen Crantz
The Politics of Park Design (1982)

Eastern Parkway (top) Ocean Parkway, 1894 (below)

2. Edge Matters: Connect and Extend

Think System or Network



Emerald Necklace Parks, Boston/Brookline, MA
Original Planning: Olmsted, Olmsted Eliot (1879-92)
Pressley Associates (1986-present)



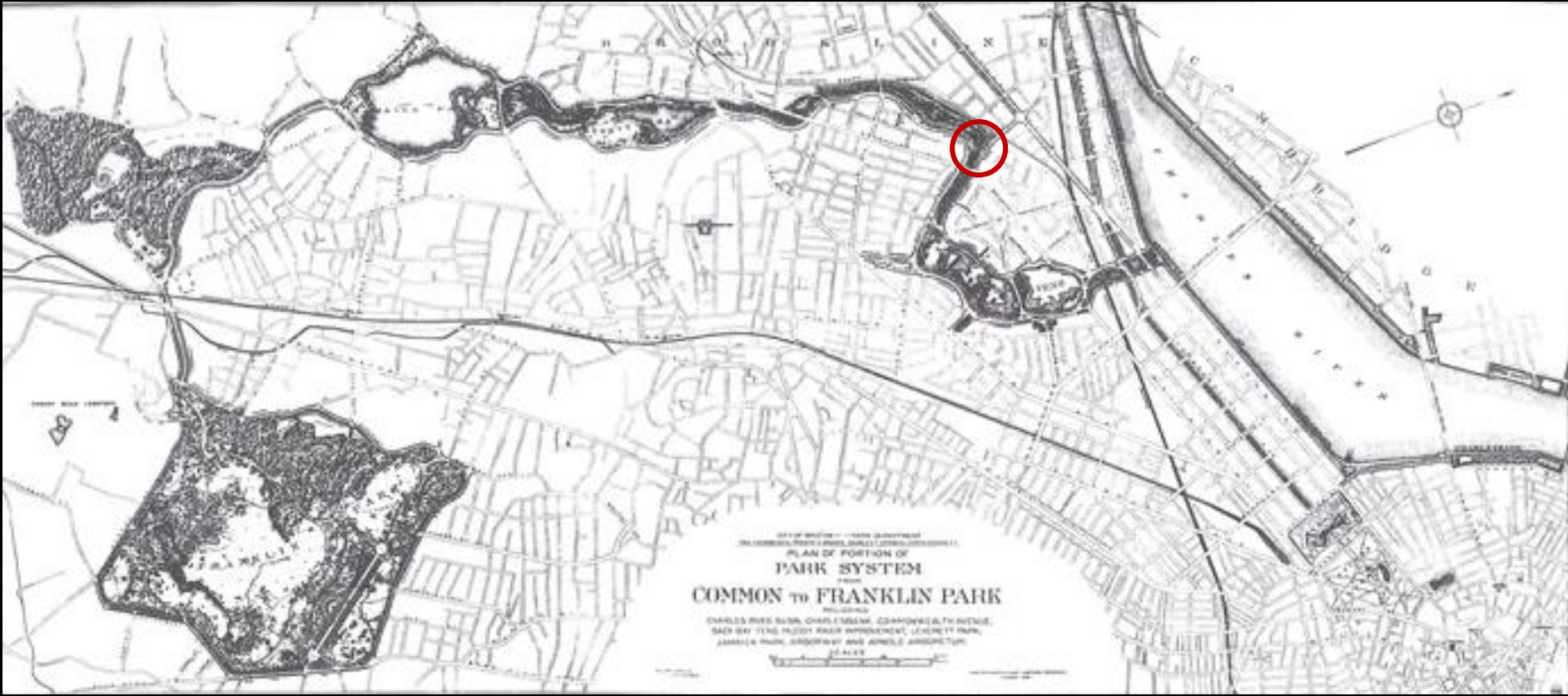
Louisville Park and Parkways System, KY
Initial Planning: Olmsted firm (1891-1921)
Waterfront Parks: Hargreaves Assoc. (1999-2004; 2016)
21st Century Parks (2005-present)



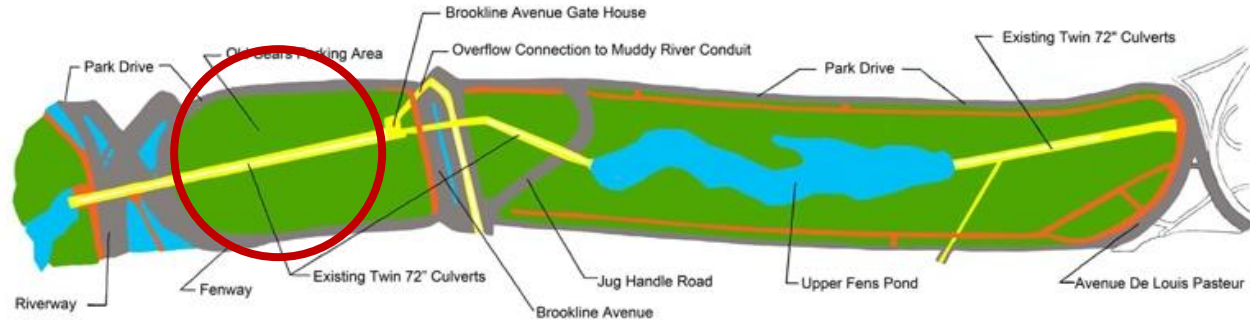
Buffalo Bayou Park, Houston, TX
Initial Planning: Arthur C. Comey, 1913
SWA Group, Houston, 2012-present



Chicago Riverwalk, IL
Initial Vision: Daniel H. Burnham, ca. 1909
Sasaki Associates 2009-present



Muddy River Flood Damage Reduction and Environmental Restoration Project

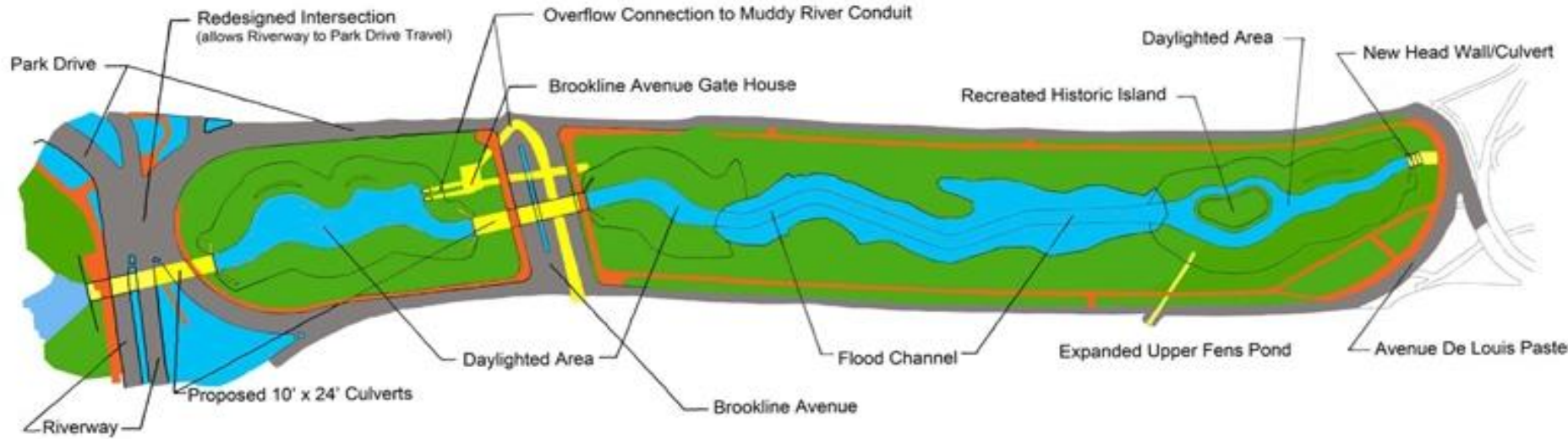




Emerald Necklace Parks, Back Bay Fens ("Sears Parking Lot")
Pressley Associates (1986-present) **This photo is from May 2016**

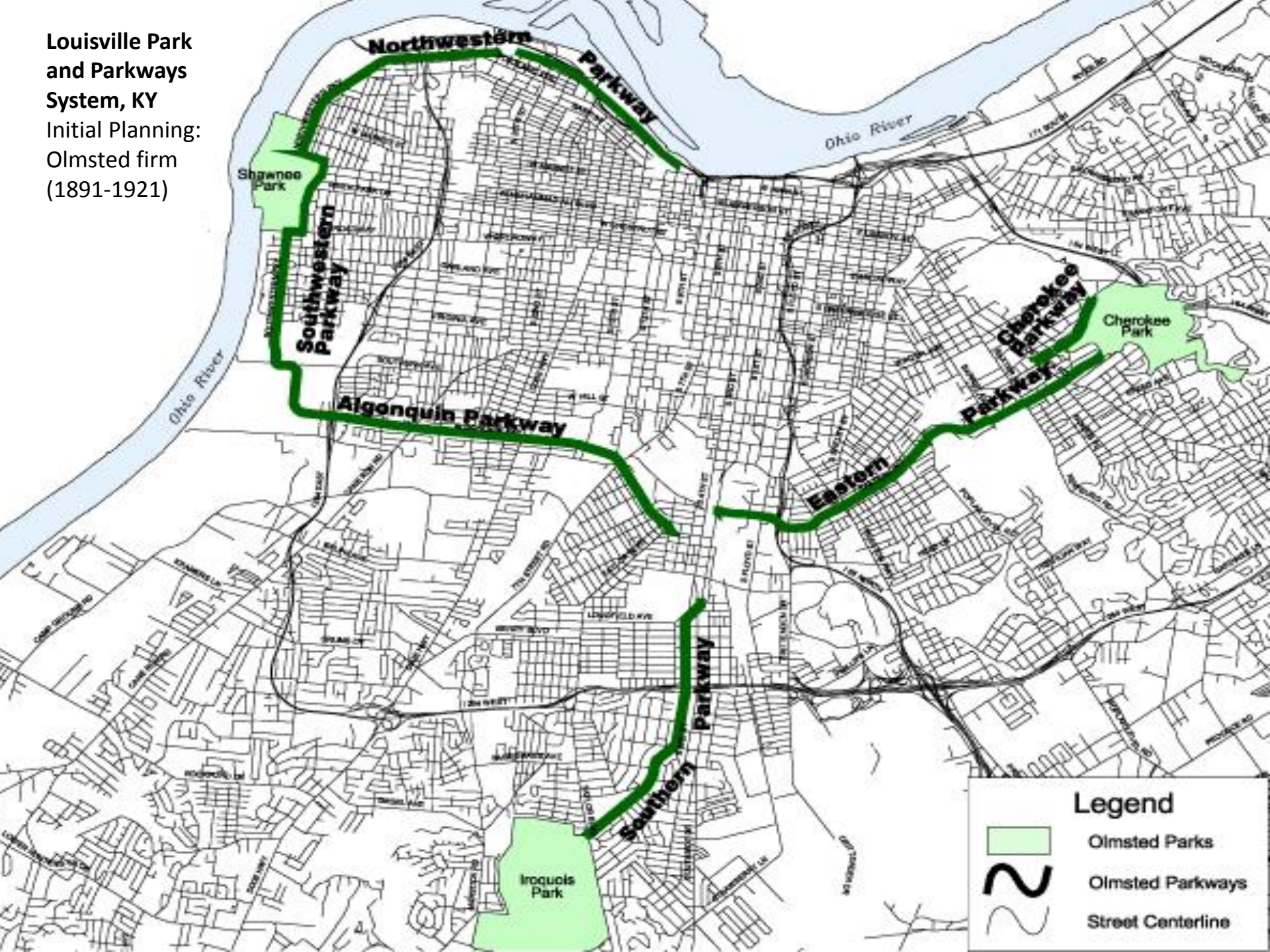


Muddy River Flood Damage Reduction and Environmental Restoration Project



Proposed Phase 1 Improvements

Louisville Park and Parkways System, KY
Initial Planning:
Olmsted firm
(1891-1921)



Louisville Park and Parkways System: *Extending the Olmsted Legacy:* Waterfront Parks Hargreaves Associates 1999-2016
(and Dual Access to Park and Bridge)



“The Big Four Bridge is a Symbol of this city just as Churchill Downs and the Belle of Louisville are symbols, and like them, the bridge is equally worthy of veneration. . .

Even if we accept the Big Four’s value as a living reminder of the city’s importance as a rail center, and further agree that it is a key element of our riverscape that should be preserved, the challenge of recycling such a large structure is formidable.”

Let’s Save the Big Four, (1975)

Louisville Looks to the Edges for New Parks, Once Again

BY JEN KINNEY | MAY 12, 2016



Paddler on Floyds Fork (Credit: Parklands of Floyds Fork)

More than 100 years ago, Frederick Law Olmsted **designed a system** of 18 parks linked by 14.5 miles of greenery-ed boulevards around the then-urban edges of Louisville, Kentucky. Over the decades, the city grew beyond that green perimeter, absorbing the parks in a spread of suburban development. This month, nonprofit 21st Century Parks is celebrating the completion of a new greenway on Louisville's now expanded limits, the city's first major public-private partnership **to construct new parks**. The **Parklands of Floyds Fork**, a \$125 million project funded by donors and grants, spans over 4,000 acres, creating a nearly 20-mile continuous parkway.

Louisville Park and Parkways System, KY
Extending the Olmsted Legacy:
 21st Century Parks (2005-present)

12 May 2016



- MOST POPULAR**
- 5 Cities to Watch in 2016: Election Year
- What Urbanists Can Learn from London's New Parks
- Designing Buildings for Resilient Cities
- Gold-Painted Streets: How to Create a Global City



FIND JOBS

Louisville Park and Parkways System, KY
Extending the Olmsted Legacy: 21st Century Parks (2005-present)




Artist Rendering



Completed project, 2016

Broad Run Park caps nearly 4,000-acre, \$125 million park system transforming Louisville's urban edge

On April 15, 2016 the 583-acre Broad Run Park, also known as The Parklands of Floyds Fork opened. This was the final major portion of the nearly 4,000-acre park system that ranks among the nation's largest and most ambitious new metropolitan parks. Its varied outdoor recreational opportunities, along its 20-mile ribbon of trails, picnic and playground areas, woods, meadows and creek was developed and is managed by the nonprofit 21st Century Parks, The Parklands is a fully donor-supported public park system that was constructed in the past five years.

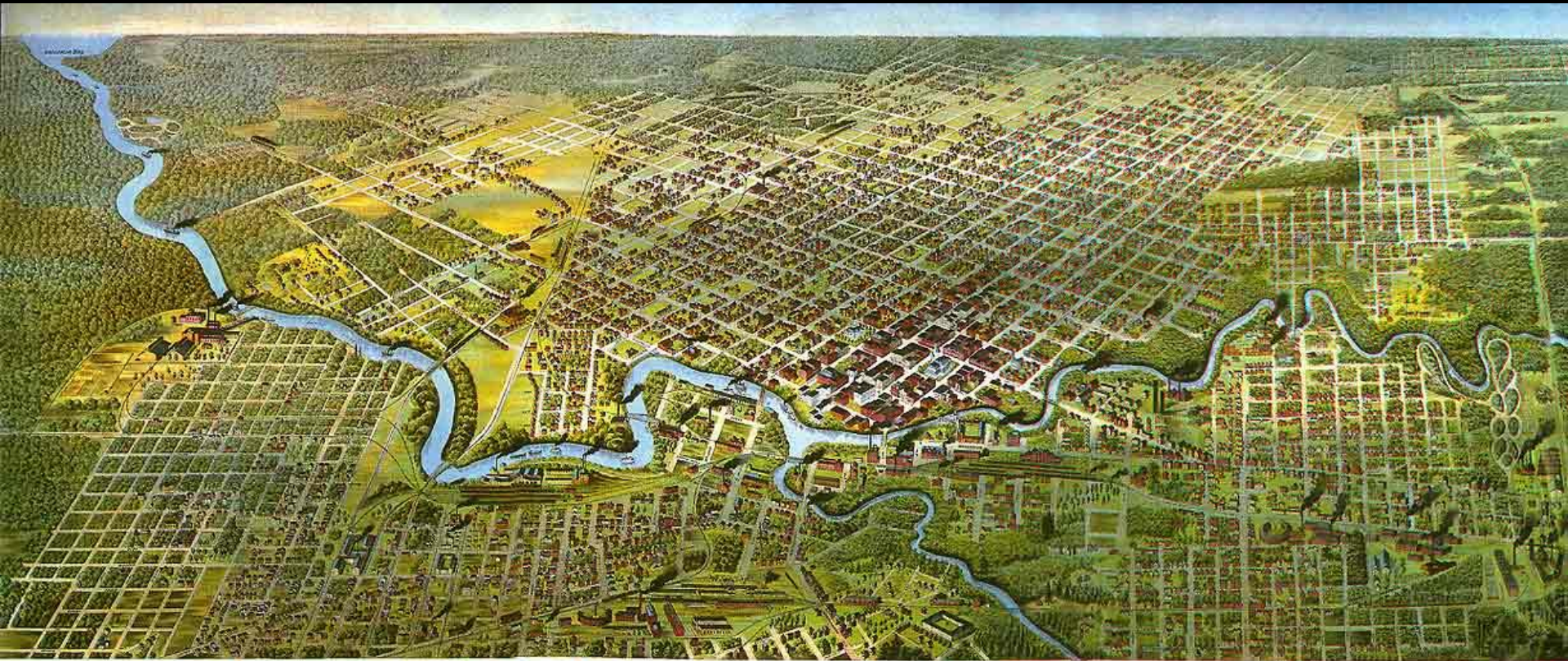
A photograph of Buffalo Bayou Park in Houston, showing a paved path under a bridge with people riding bicycles and walking. The path is lined with greenery and concrete pillars supporting the bridge above. The water of the bayou is visible on the left side of the path.

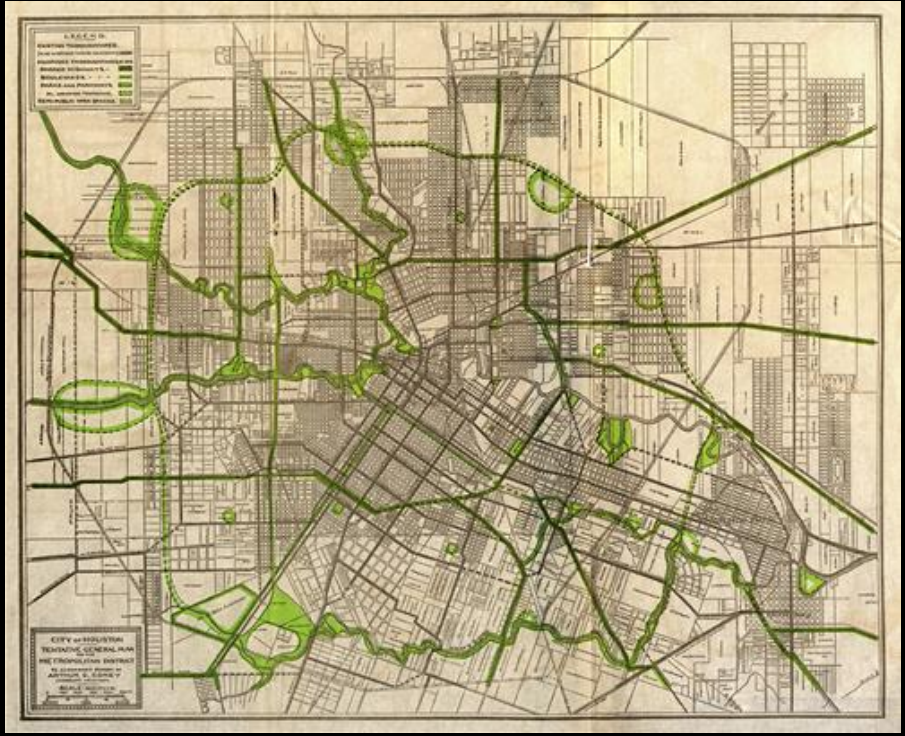
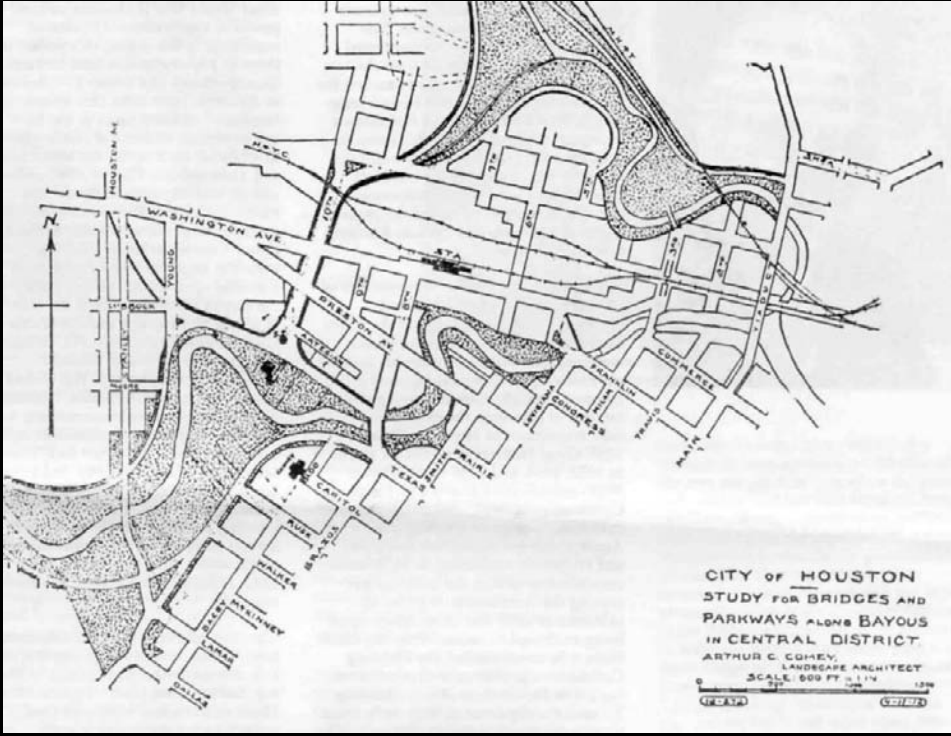
“Houston owes its very existence to Buffalo Bayou. Buffalo Bayou Partnership has taken a neglected waterway and transformed it into an attractive and inviting gateway into downtown and beyond.”

— Former Mayor Annise D. Parker, City of Houston

Buffalo Bayou Park, Houston
Initial Planning: Arthur C. Comey, 1913
SWA Group, Houston, 2012-present

Buffalo Bayou Park, Houston
Initial Planning: Arthur C. Comey, 1913





Comey's plan for proposed parkways along White Oak and Buffalo Bayou, 1913 (left) and Comey's first comprehensive plan for the city, *Houston: Tentative Plans for its Development*.

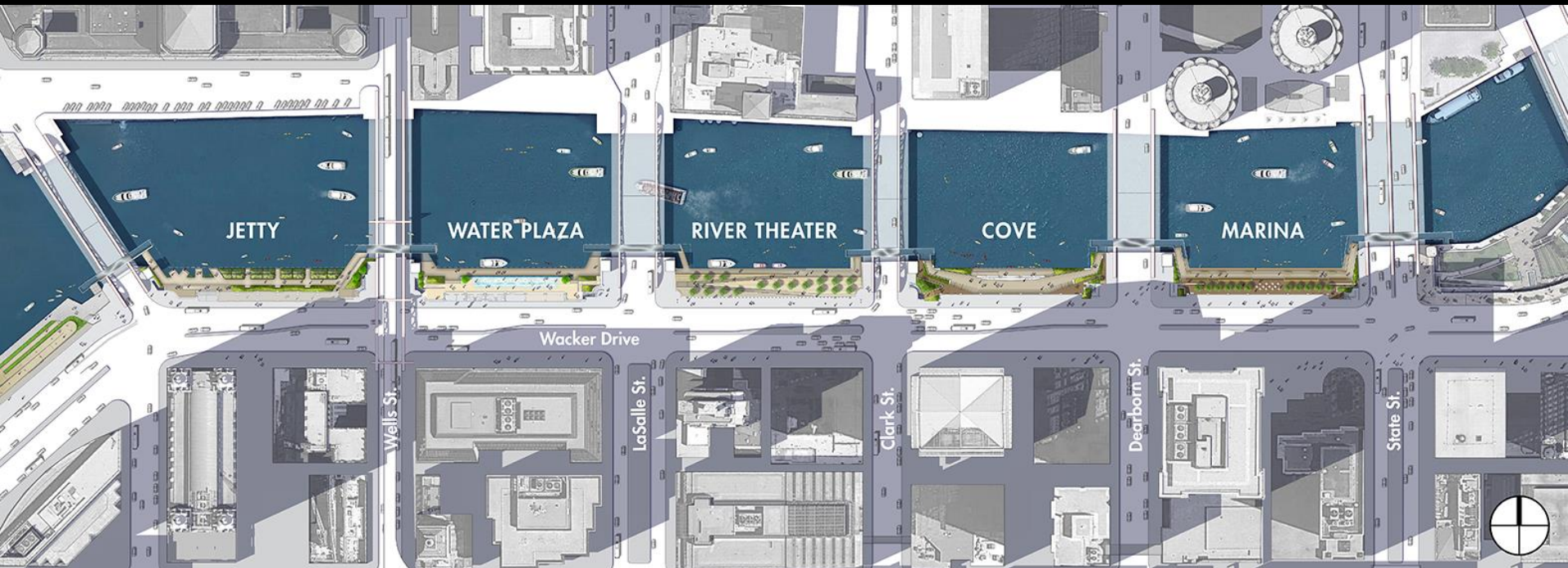




Buffalo Bayou Park, Houston SWA, 2012-present

...AND
CONNECTIVITY,
CONTINUITY +
CONTIGUITY

In 1909 Daniel Burnham introduced a civic vision that included riverside promenades. A century later, an increased value and role of the river has been realized with the Chicago Riverwalk project by Sasaki Associates. This effort has also improved access while reclaiming the river's ecological, recreational and economic assets.



Chicago Riverwalk, IL
Initial Vision: Daniel H. Burnham, ca. 1909
Sasaki Associates 2009-present



Chicago Riverwalk, IL
Sasaki Associates 2009-present



Chicago Riverwalk, IL
Sasaki Associates 2009-present



Chicago Riverwalk, IL
Sasaki Associates 2009-present



PUT A CAP ON IT





3. Edge Matters: Put a Cap on It Create the Connective Tissue

Freeway Park, Seattle, WA

First cap over a Freeway, Lawrence Halprin (1976)



Klyde Warren Park, Dallas, TX

The Office of James Burnett (2012)



The Presidio Parkway, San Francisco, CA

The Presidio Trust (*underway*)



Cap Happy!

Pretty much everywhere you look



Freeway Park, Seattle, WA (1976)



Klyde Warren Park, Dallas, TX
The Office of James Burnett (2012)

The 5-acre park “creates green space ‘out of thin air’ that connects the vibrant Uptown neighborhood with the Dallas Arts District and downtown.



Sinking Doyle Drive results in 13 acres of new parkland at The Presidio of San Francisco







Presidio Parklands area, with Doyle Drive running underground through a tunnel. (Winning Competition entry, James Corner Field Operations)



Rebranding – *“It’s not a Freeway”*
(including perhaps the first PARK PLUSH – PARKER!)



CAP HAPPY: RESTORING NEIGHBORHOOD CONNECTIVITY

Cincinnati's Planned Freeway Cap (left top); "Space 134" project, from Glendale to Central Avenue, Glendale, CA (top right), Cap on 405 in Portland, OR (above left) and Hollywood Freeway, CA (bottom right)



BQ Green would create parkland over more than two blocks of the BQE ditch.



Robert Moses rammed the expressway ditch through the neighborhood in the 1950s. Today, the road is blamed for the area's elevated asthma rates, and serves as a convenient boundary for modern day gangs.

Nathan Tempey, *Gothamist*, 09 May 2016

Design by **dland Studio** (2016)

A couple weeks ago, I noticed something while walking by Bryant Park. There were people hanging out on 40th Street. That was different. It took a moment to realize what had changed. The fence was gone. . . Initially, I thought it was a deliberate decision to activate the edge of the park...

25 July 2015, *Urban Residue Blog*





WWW.TCLF.ORG

