

Community Parks Initiative

Build a bright, green future.



Parks

Jennifer Gardner, Senior Planner, NYC Parks
May 24, 2016

Parks Without Borders: Ideas for the Next Generation of Urban Parks

**OUR COMMITMENT:
CREATE A
BRIGHT, GREEN FUTURE
WITH A MORE INCLUSIVE
AND INNOVATIVE
PARK SYSTEM**



NYC Parks

Community Parks Initiative
Build a bright, green future.

WHAT IS THE COMMUNITY PARKS INITIATIVE?

The **Community Parks Initiative** engages New Yorkers in **transforming local parks**, and will dedicate resources to **make these parks great public places**.

NYC Parks will spend **\$285 million** to upgrade parks in communities that need resources most.



NYC Parks

Community Parks Initiative
Build a bright, green future.











BEST TRICK REGISTRATION 1st-2nd FREE EATER

element











CAPITAL INVESTMENT BY NYC PARKS IN PUBLIC PARKLAND, 1992-2013

HISTORIC INVESTMENT TRENDS

- 400 active capital projects, across all five boroughs, totaling over \$740M of investment
- NYC Parks spent ~ \$5.7 billion on capital improvements over the past two decades
- 215 parks across the city received minimal capital investment—less than \$250,000 over 20 years
- Total capital need for these 215 parks estimated at about \$1 billion

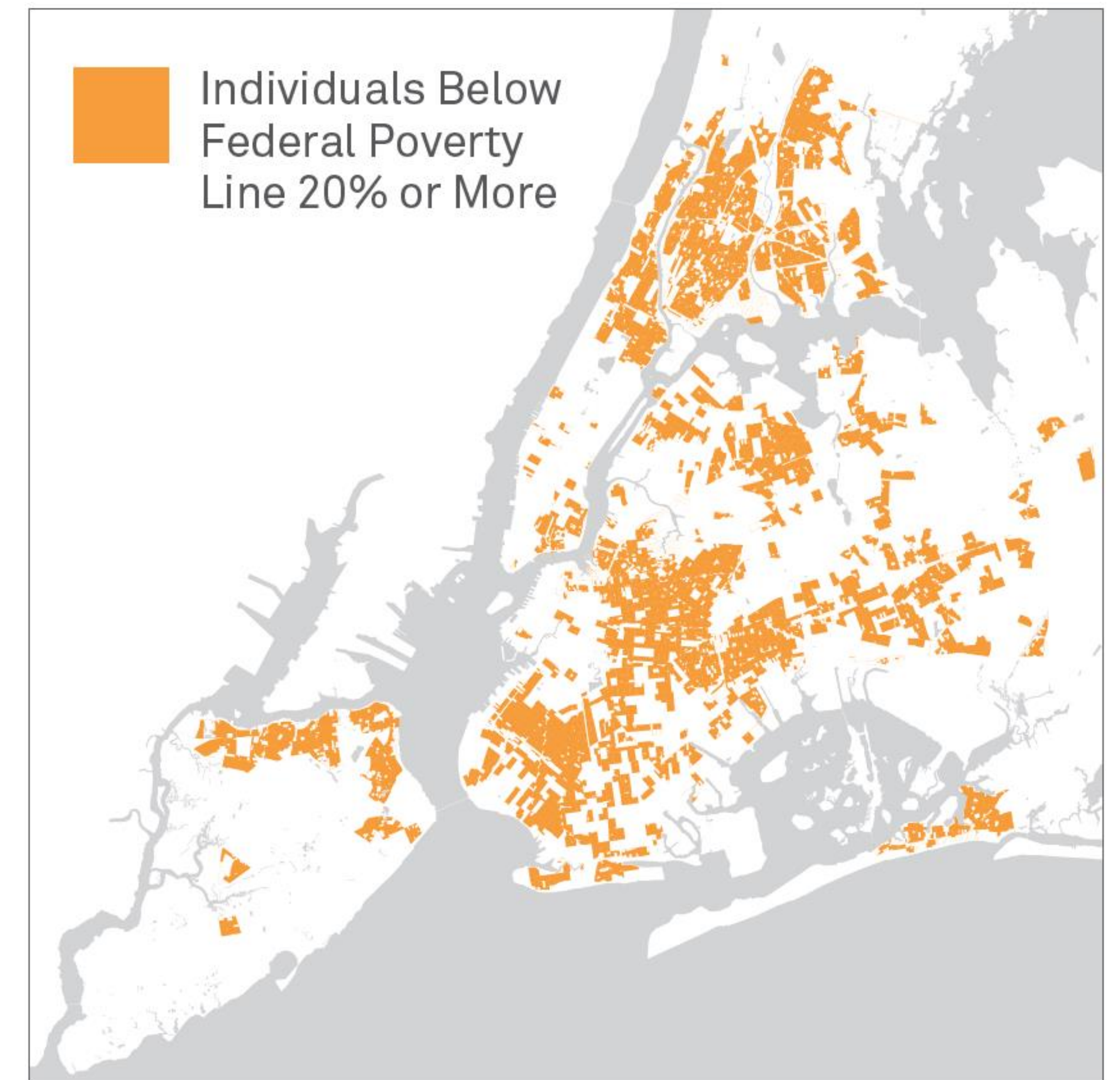
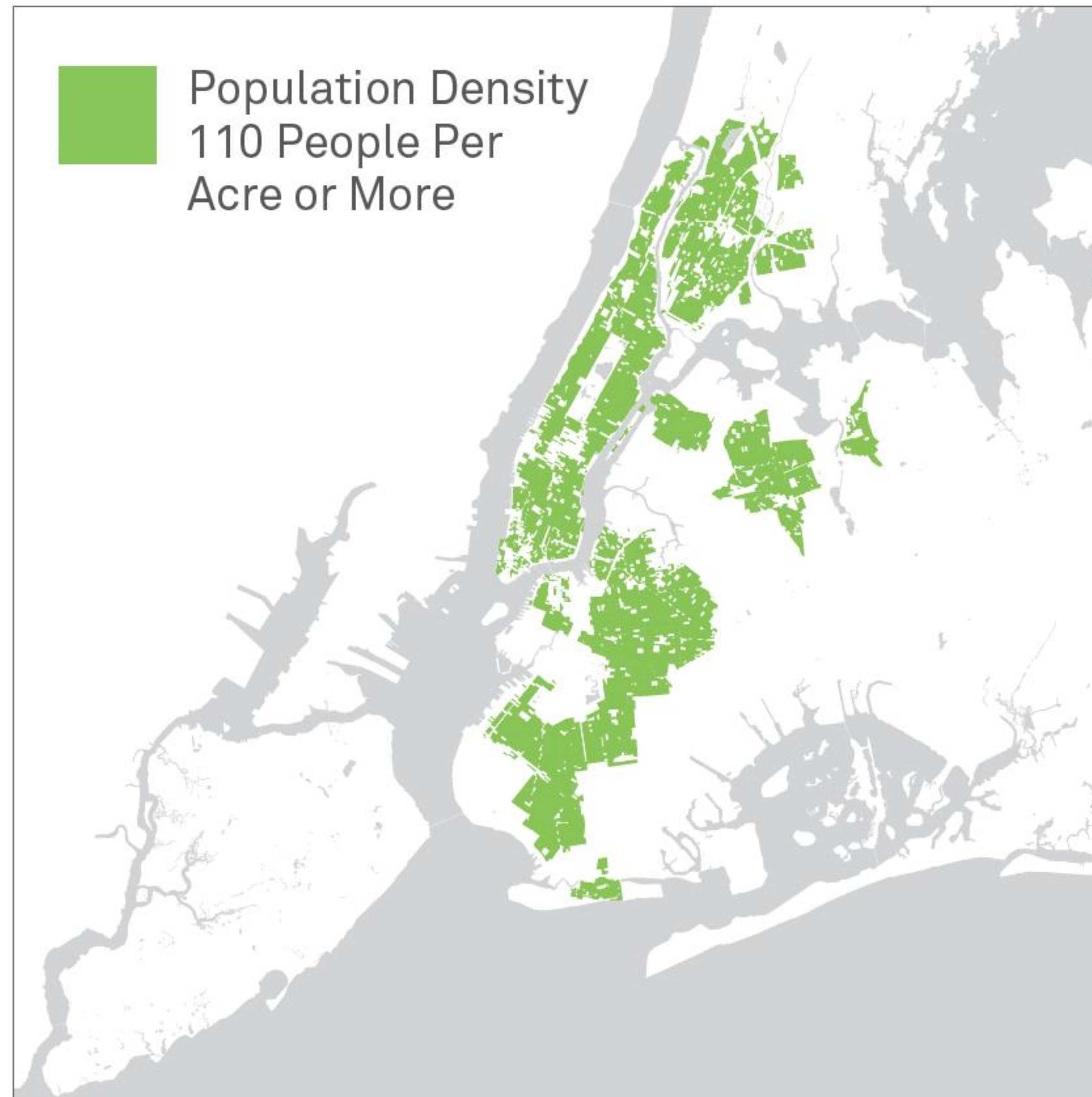
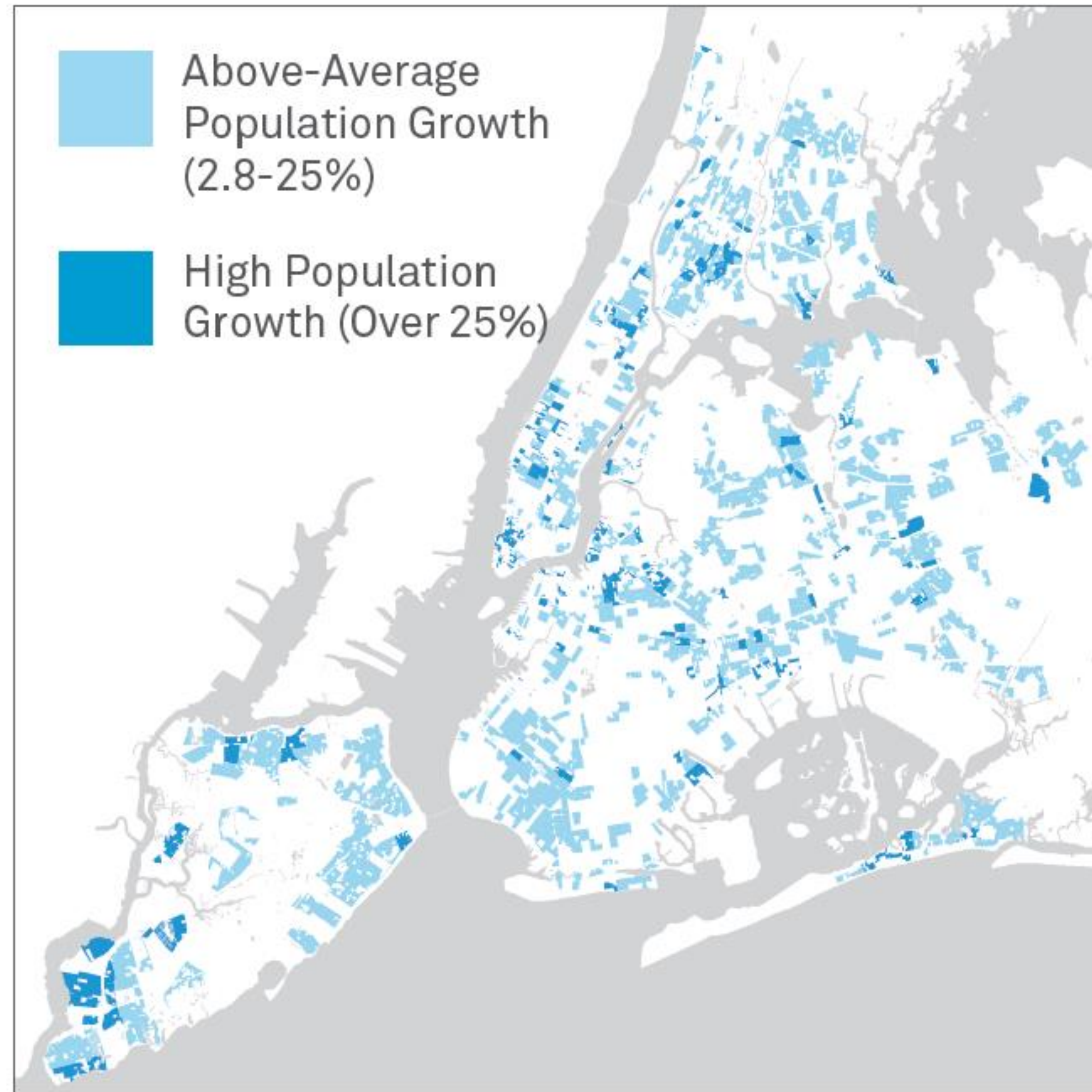


NYC Parks

Community Parks Initiative
Build a bright, green future.

Note: Investment data comes from NYC Parks' Capital Division. Best efforts were made to identify all sites funded through requirements contracts. The mapped data excludes PlaNYC Schoolyards-to-Playgrounds project sites; projects funded by other agencies; sites run by a concessionaire; and sites in design, procurement or construction.

NEIGHBORHOOD CHARACTERISTICS



NYC Parks

Community Parks Initiative
Build a bright, green future.

REFINING CPI PROGRAM SCOPE

UNDER-RESOURCED PARKS SERVING HIGH-NEED AREAS

Alignment of underlying demographics and under-resourced parks helped identify communities in which to focus investment.

This map shows overlap of poverty, density and growth criteria – the more priority characteristics, the darker the area on the map.

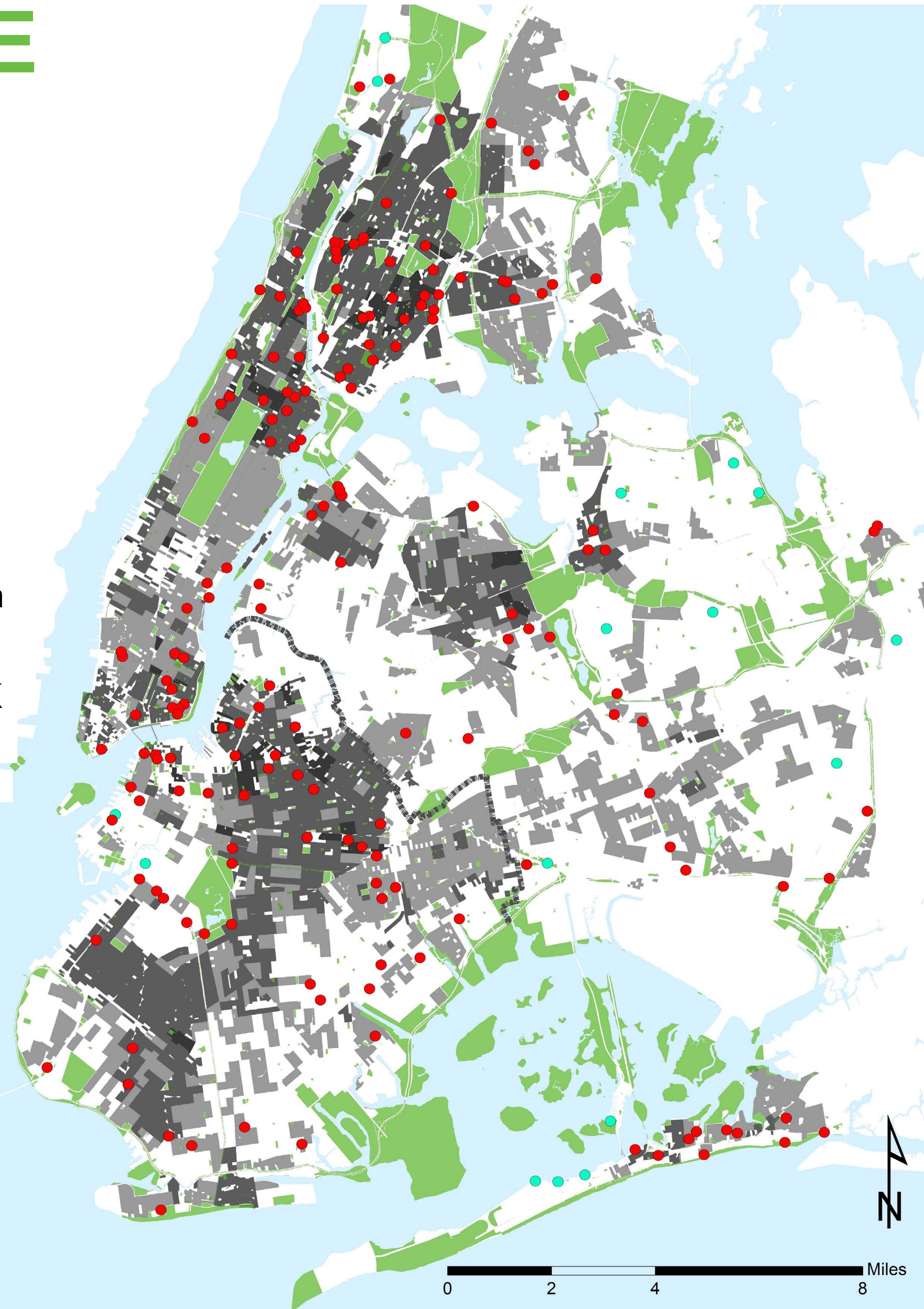
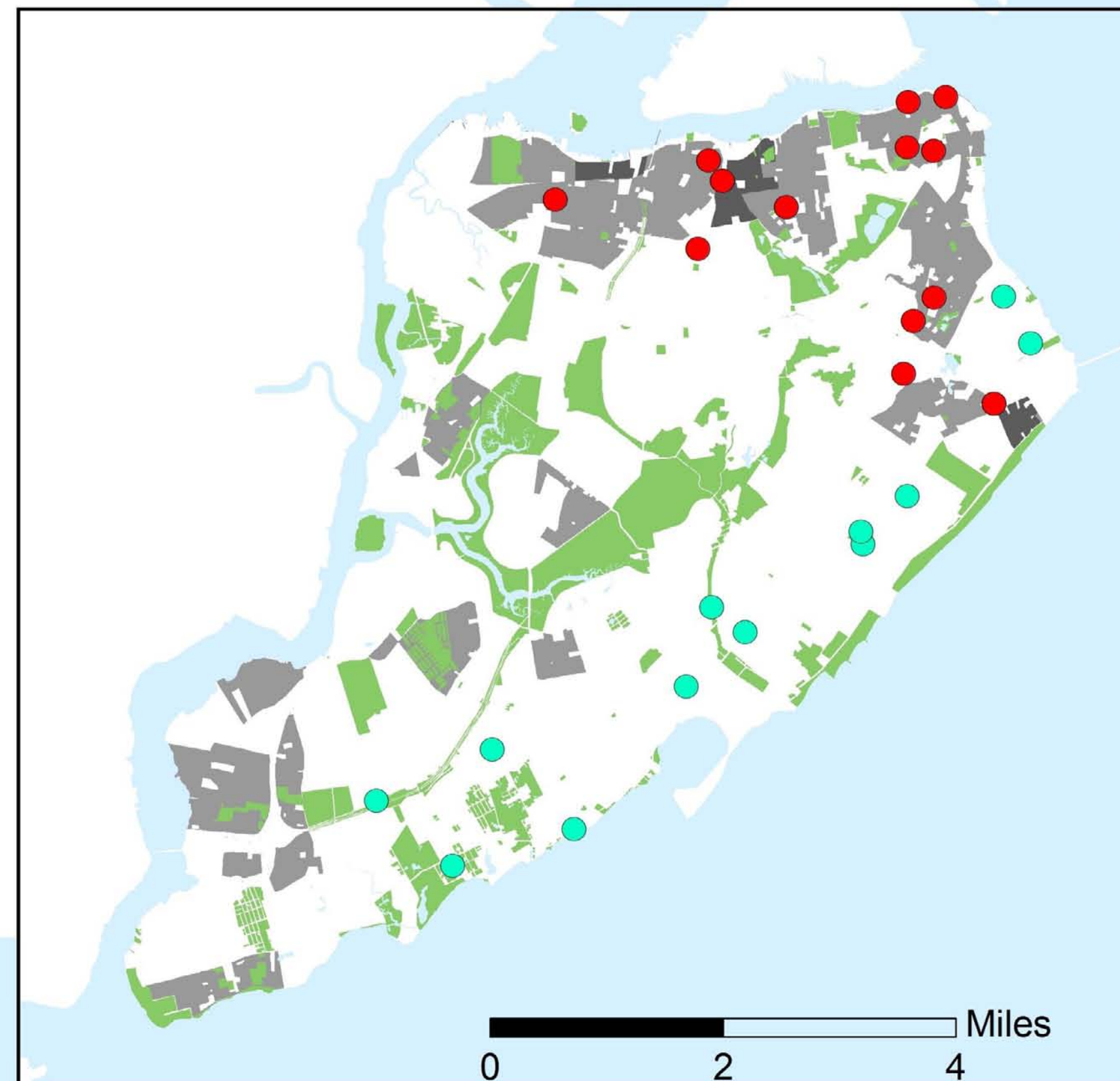
Red dots exclude community gardens; buildings; historic house parks; cemeteries; park strips; malls; parkways; undeveloped natural areas; sites that cannot be developed; any site smaller than 0.15 acres; and triangles/plazas smaller than 0.5 acres.



NYC Parks

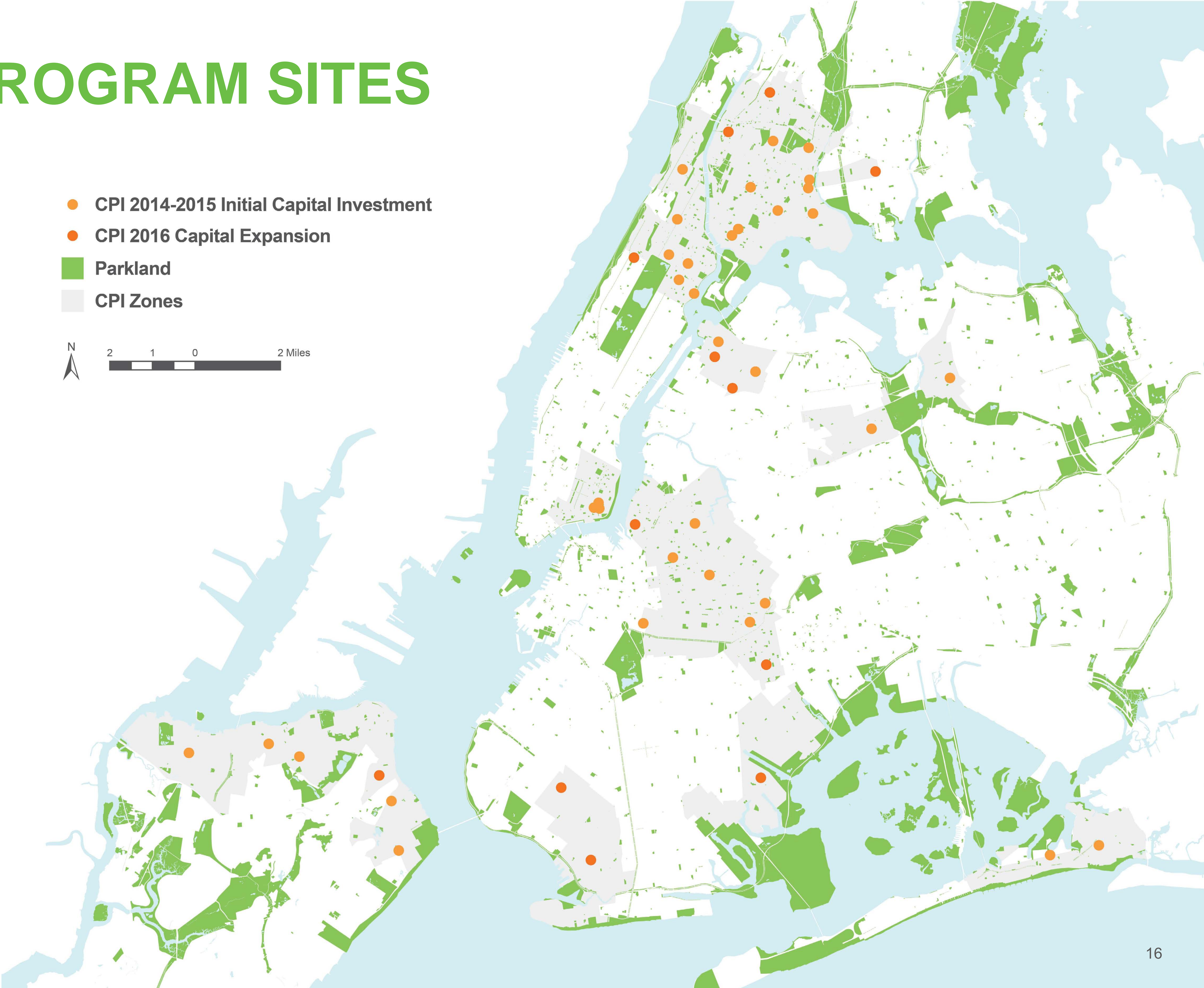
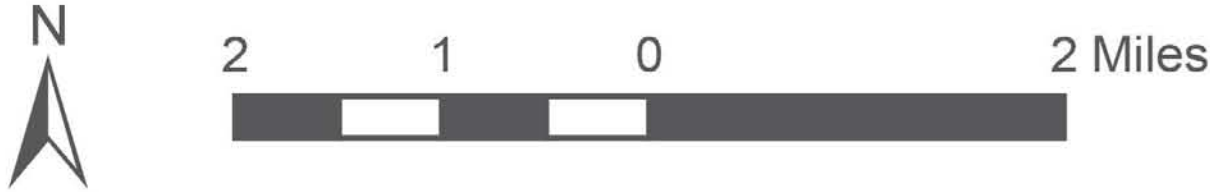
Community Parks Initiative
Build a bright, green future.

- One characteristic
- Two characteristics
- Three characteristics
- <\$250K invested and within ¼ mile of 2+ characteristics
- All other parks with <\$250K invested.*



CPI CAPITAL PROGRAM SITES

- CPI 2014-2015 Initial Capital Investment
- CPI 2016 Capital Expansion
- Parkland
- CPI Zones



NYC Parks

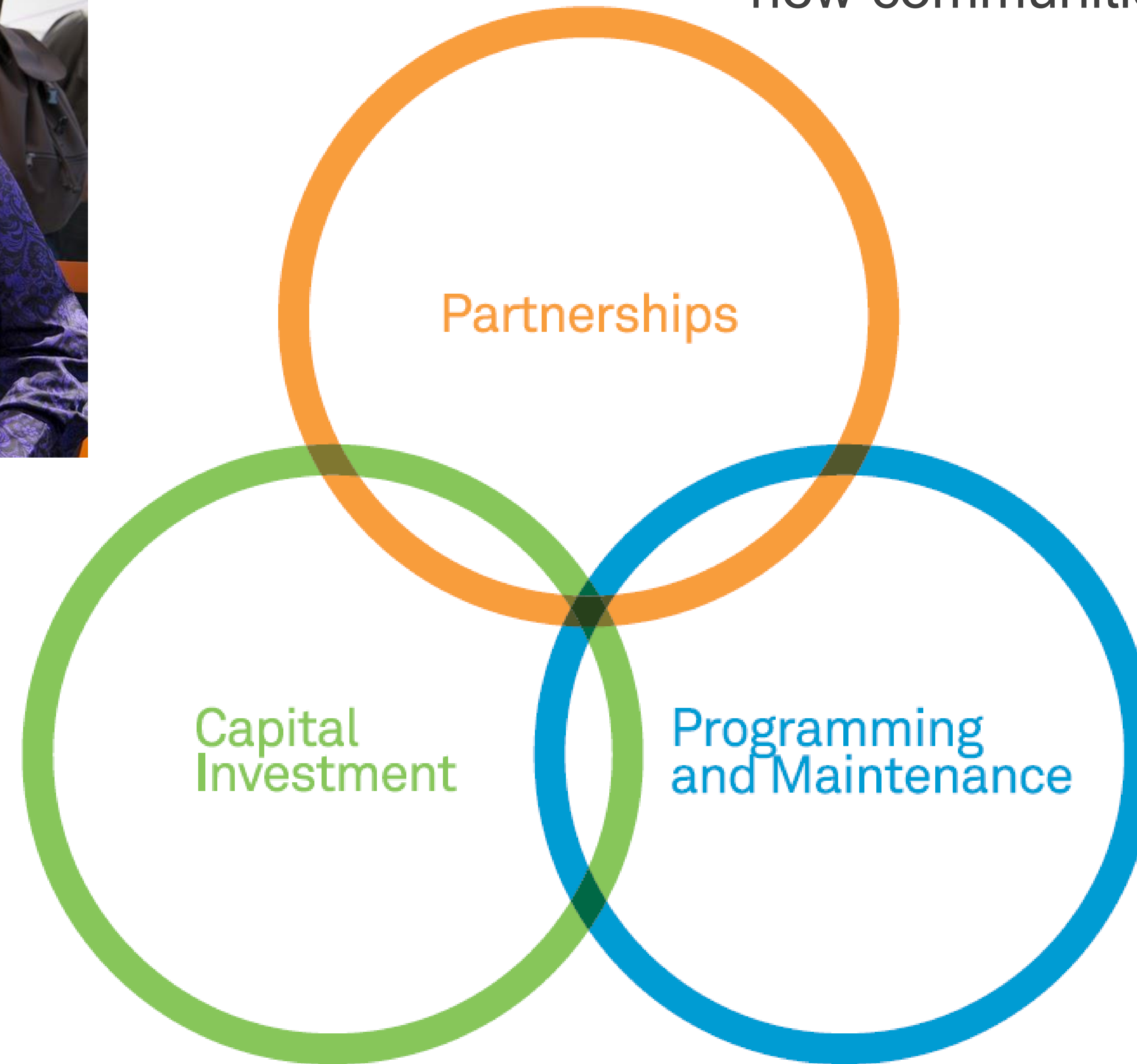
Community Parks Initiative
Build a bright, green future.

BUILDING ON THE FOUNDATIONS OF GREAT PARKS



Partnerships: Initiate long-term outreach and community organizing

Programming: Expand our capacity, bring recreational programming to new communities



Maintenance: Take care of our neighborhood parks, more holistically



NYC Parks

Community Parks Initiative
Build a bright, green future.

COMBINED RESOURCES FOR CPI COMMUNITIES

Capital	Partnerships	Programming & Maintenance			
<p>Re-imagine and re-create neighborhood parks in every borough</p> <p>\$285 million total investment</p> <p>35 parks in 2015</p> <p>12 new sites in 2016</p>	<p>Improve park sustainability with green infrastructure</p> <p>\$36 million in DEP funding for 2015</p> <p>\$14 million from DEP for 2016</p>	<p>Dedicated outreach coordinators are available to help communities better use and care for their parks</p>	<p>Playground Associates make programs for kids possible in CPI parks all summer long</p>	<p>New maintenance and gardening staff are sprucing up CPI zones</p>	<p>Create immediate impacts with targeted improvements at 25 parks every year</p> <p>60 Projects completed in FY15 with \$1 million in in-house resources</p>

