

MADE IN HOUSTON



Airline District, Houston TX

Mobile Community Infrastructure



MOBILE HOME COMMUNITY

EVERYDAY FLEA MARKET

AIRLINE DRIVE

Museum of Freeway Art, Atlanta GA Re-Envisioning American Infrastructure



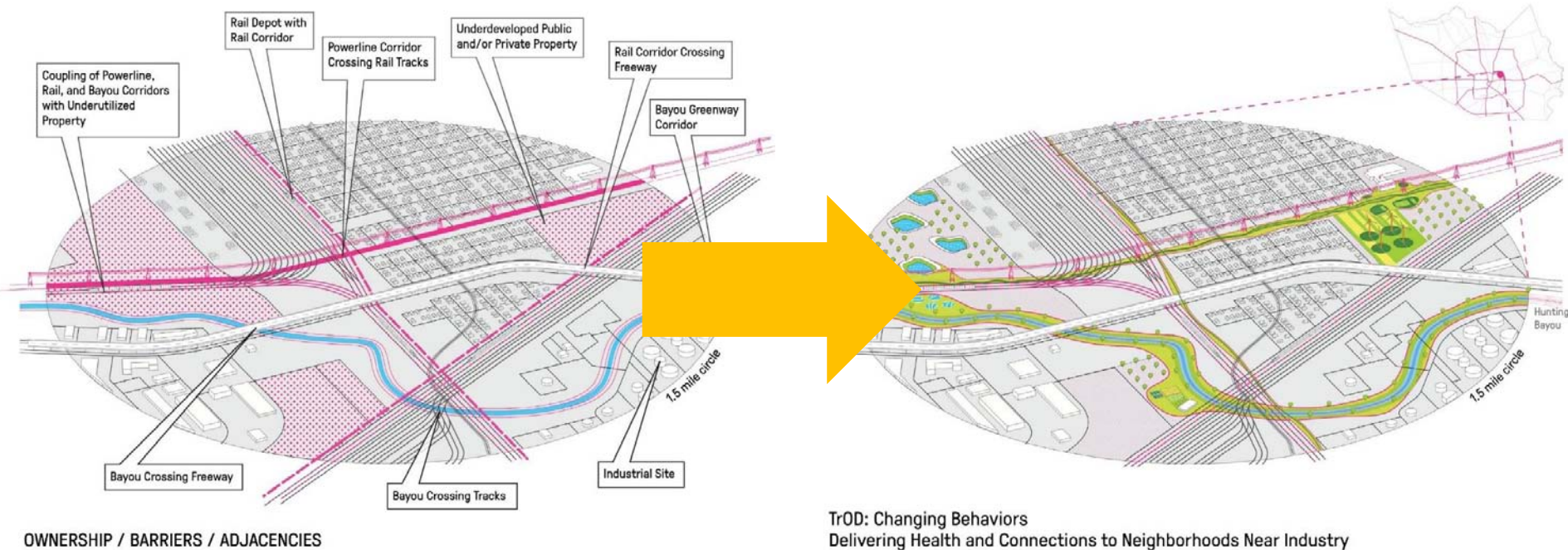
Buffalo Belt, Houston TX

Converting Freeways to Public Space



Green Grid, Houston TX

Health and Diversity Delivery System










Ship Channel and foot of Main Street, Houston, Texas.

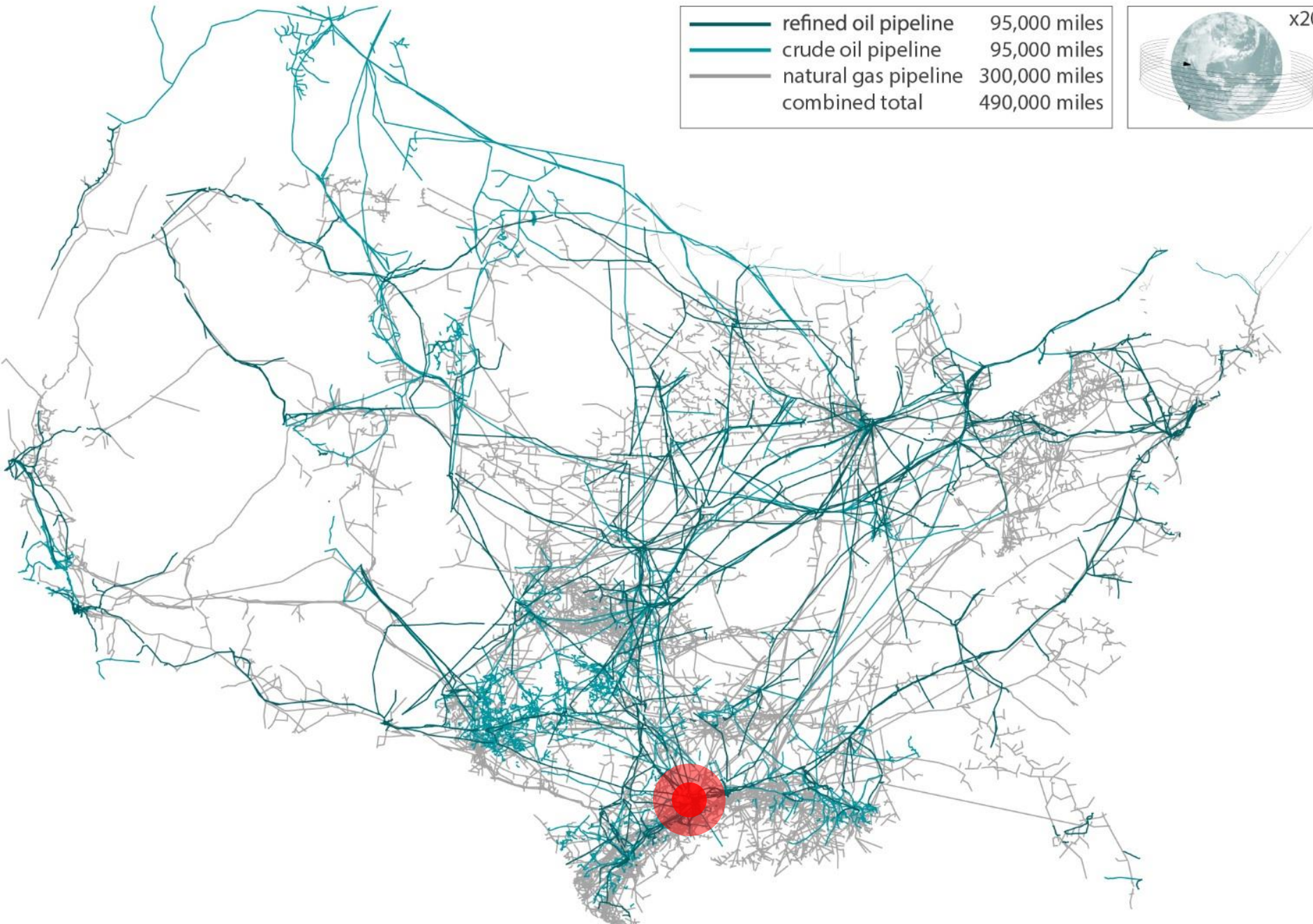
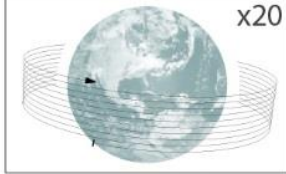
HOUSTON IS INFRASTRUCTURE

14310





	refined oil pipeline	95,000 miles
	crude oil pipeline	95,000 miles
	natural gas pipeline	300,000 miles
	combined total	490,000 miles



An aerial photograph of a large industrial yard, likely a steel mill, filled with numerous stacks of steel pipes and beams. The stacks are arranged in neat rows across a dirt and grass area. The pipes are dark grey, while some beams are reddish-brown. The text "INFRASTRUCTURE 3 ASSUMPTIONS" is overlaid in large, bold, yellow letters in the center of the image.

INFRASTRUCTURE 3 ASSUMPTIONS

An aerial photograph of a massive freight rail yard. The yard is filled with hundreds of tracks, many of which are occupied by long trains of freight cars. The cars are in various colors, including white, grey, and blue. The tracks are arranged in a complex, grid-like pattern with many curves. In the background, there are some industrial buildings and parking lots. The overall scene is one of intense industrial activity and infrastructure.

1. Government Has a Role in Providing Infrastructure

2. Infrastructure is Equally Accessible to Community

3. Infrastructure Generates Spillover Social Gains

-Frischmann, Brett "Infrastructure: The Social Value of Shared Resources"

BAYOU GREENWAYS

+ HOUSTON

+ HOUSTON SHIP CHANNEL

GALVESTON BAY

75 MILES

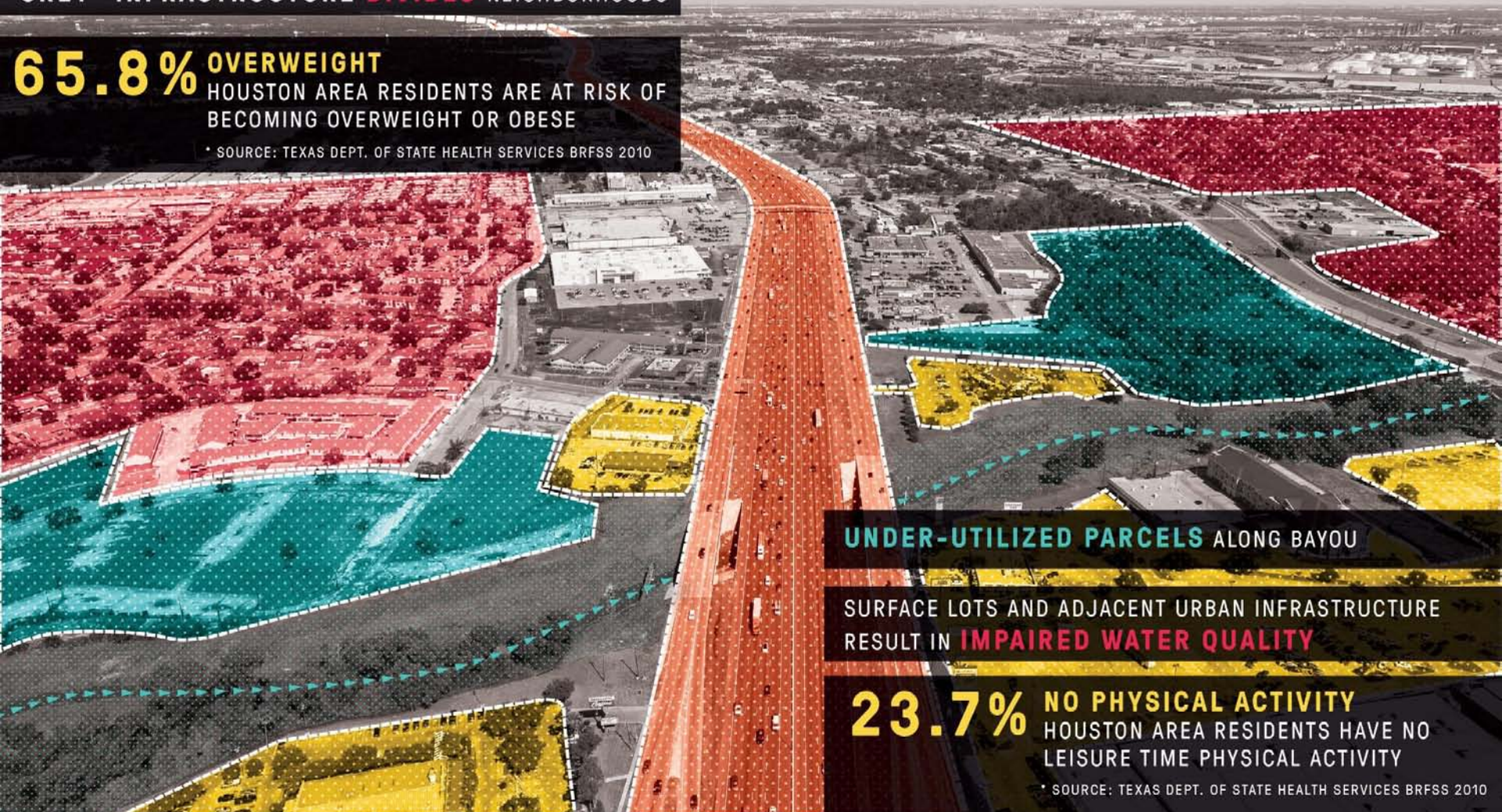


CAR-CENTRIC HOUSTON DISCOURAGES WALKING
CONTRIBUTING TO UNHEALTHY OUTCOMES

GREY- INFRASTRUCTURE DIVIDES NEIGHBORHOODS

65.8% OVERWEIGHT
HOUSTON AREA RESIDENTS ARE AT RISK OF
BECOMING OVERWEIGHT OR OBESE

* SOURCE: TEXAS DEPT. OF STATE HEALTH SERVICES BRFSS 2010



UNDER-UTILIZED PARCELS ALONG BAYOU

SURFACE LOTS AND ADJACENT URBAN INFRASTRUCTURE
RESULT IN **IMPAIRED WATER QUALITY**

23.7% NO PHYSICAL ACTIVITY
HOUSTON AREA RESIDENTS HAVE NO
LEISURE TIME PHYSICAL ACTIVITY

* SOURCE: TEXAS DEPT. OF STATE HEALTH SERVICES BRFSS 2010

HOUSTON: RECONNECTED



“**BAYOU CITY**” RECONNECTING HOUSTON WITH ITS ONCE FORGOTTEN PAST



EMBRACING THE UNIQUE URBAN DEVELOPMENT PATTERNS OF THE **NEIGHBORHOODS**



REDEFINING **HOUSTON**'S OPEN SPACE SYSTEM TO CREATE HEALTHY LIVING OPPORTUNITIES FOR ALL



REHABILITATING ECOLOGICAL CORRIDORS TO IMPROVE **WATER QUALITY**



EXPANDING **FLOOD MITIGATION** OPPORTUNITIES

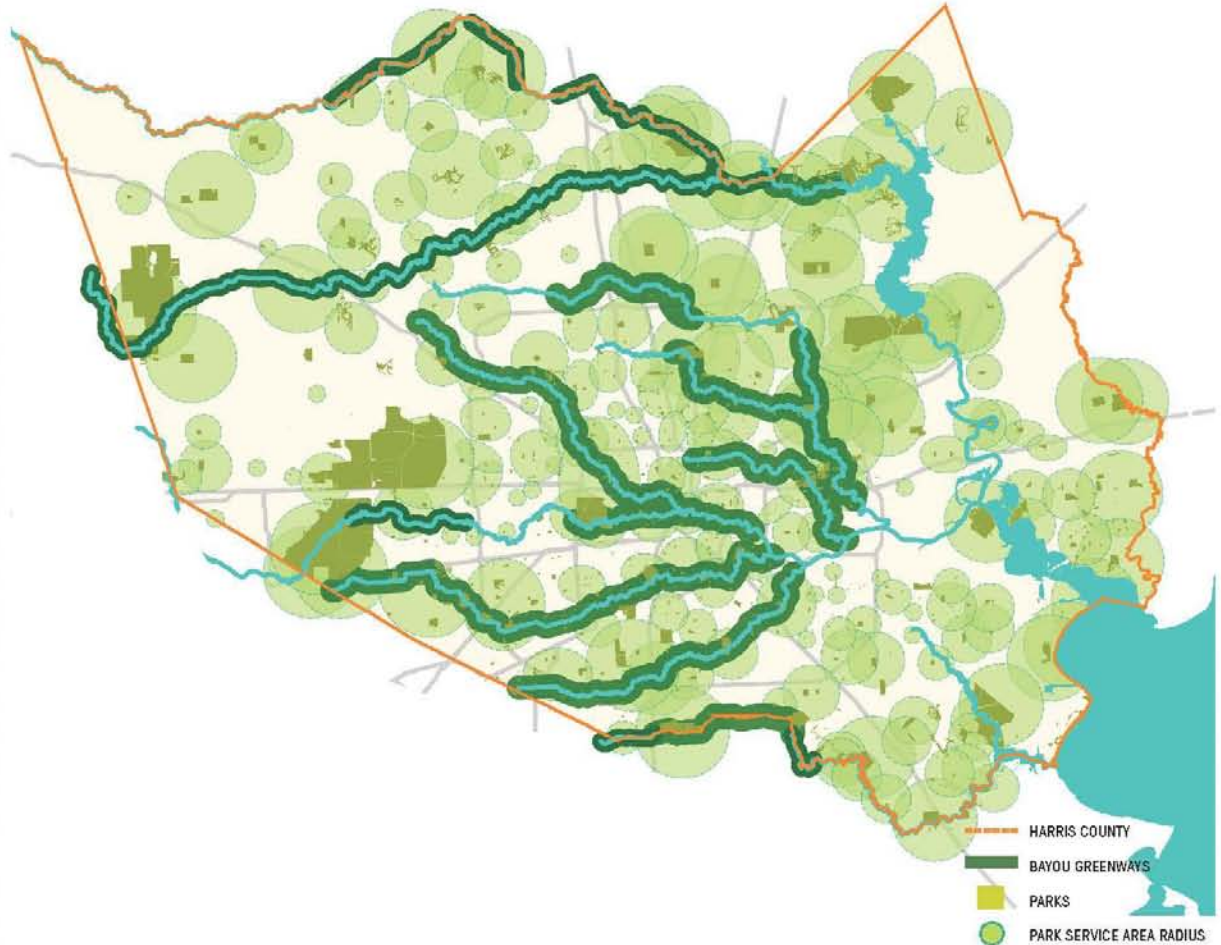
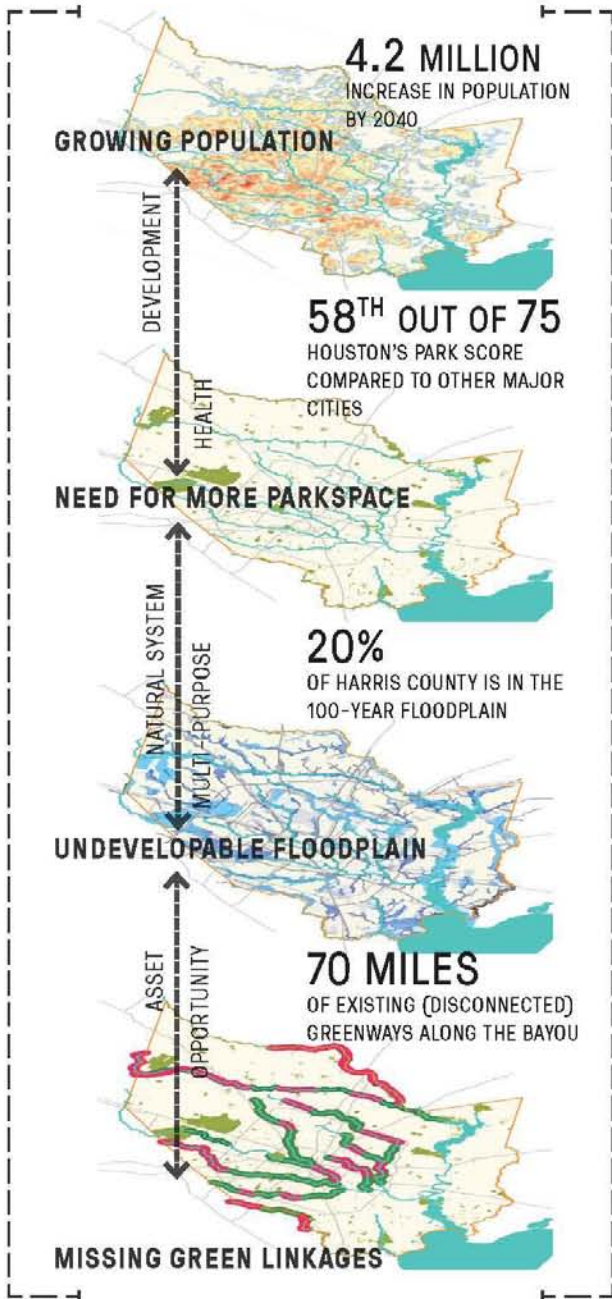


ENHANCING **ECOSYSTEM SERVICES** THROUGH NATIVE/NATURALIZED PLANTING

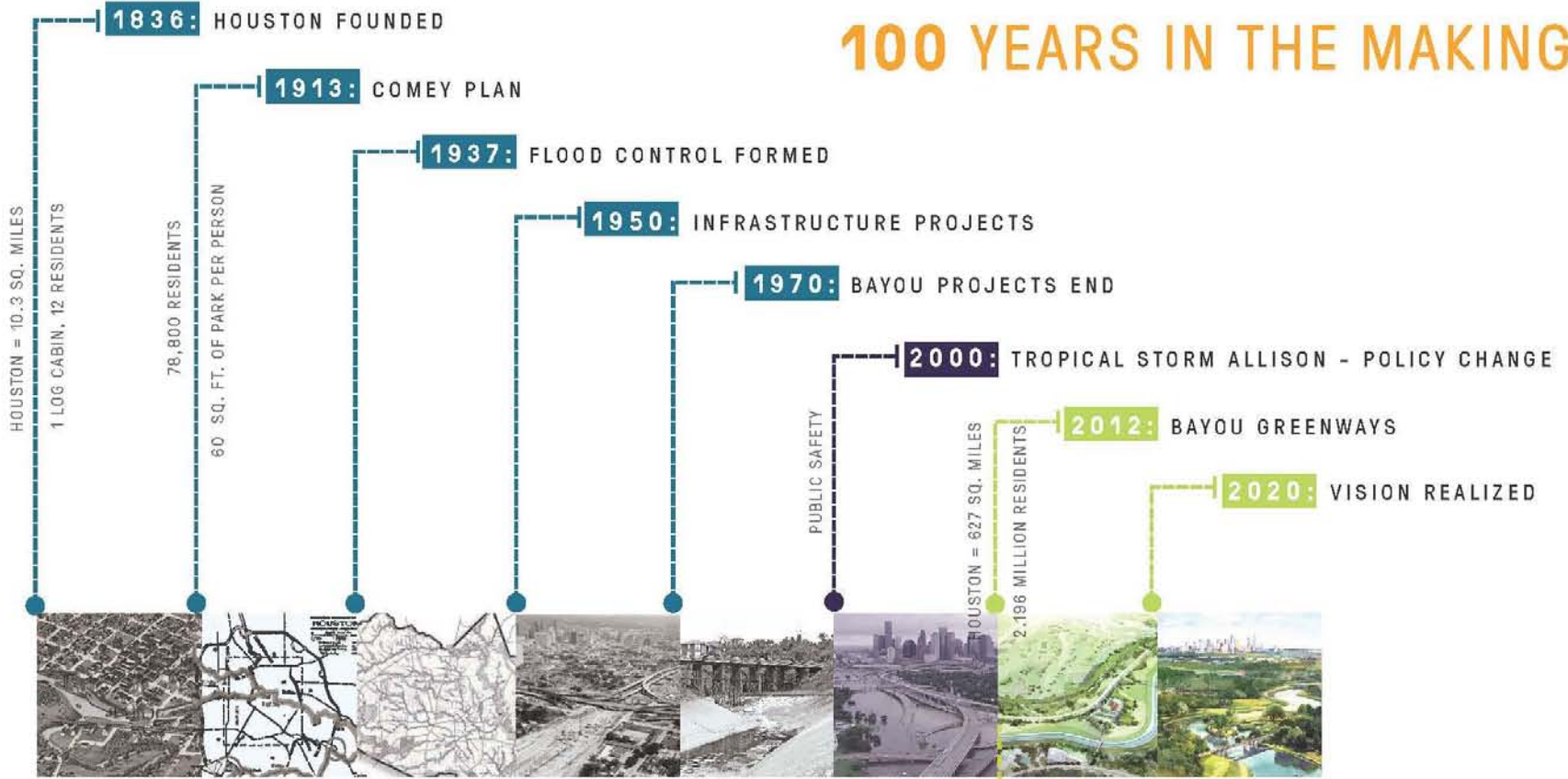


CREATING **EQUITABLY DISTRIBUTED PARKLAND** FOR HOUSTON BY CONNECTING EXISTING GREEN SPACE WITH NEWLY ACCESSIBLE GREENWAY CORRIDORS

BAYOU GREENWAYS APPROACH



100 YEARS IN THE MAKING



\$480 MIL IN PROJECT FUNDING FROM PUBLIC SUPPORT

\$205 MIL	SUPPORT FROM CITY OF HOUSTON	\$100 MIL	68.2% OF TOTAL PARKS BOND IN 2012
\$275 MIL	SUPPORT OUTSIDE CITY OF HOUSTON	\$105 MIL	* LARGEST PARKS BOND IN HOUSTON HISTORY
			RAISED IN PRIVATE PLEDGES

BAYOU GREENWAY BENEFITS

\$77.1 MIL

PHYSICAL + MENTAL HEALTH BENEFITS

HEALTH CARE COST SAVINGS | RECREATIONAL USE VALUE | URBAN COHESION

\$22.5 MIL

ENVIRONMENTAL HEALTH BENEFITS

AIR QUALITY + ENHANCED BIKE USE | ECOSYSTEM SERVICES | FLOOD/RUN-OFF REDUCTIONS + WATER QUALITY

\$17.5 MIL

ECONOMIC HEALTH BENEFITS

RETIREE RETENTION + RELOCATION | ENHANCED PROPERTY TAX BASE | COMPANY TALENT RECREATION + RELOCATION

* BAYOU GREENWAYS: A KEY TO A HEALTHY HOUSTON, August 2011, Bayou Greenways Benefit Analysis

6-in-10

HOUSTONIANS WILL LIVE WITHIN 1.5 MILES OF A BAYOU GREENWAY TRAIL





BUFFALO BAYOU PROMENADE

BUFFALO BAYOU PARK



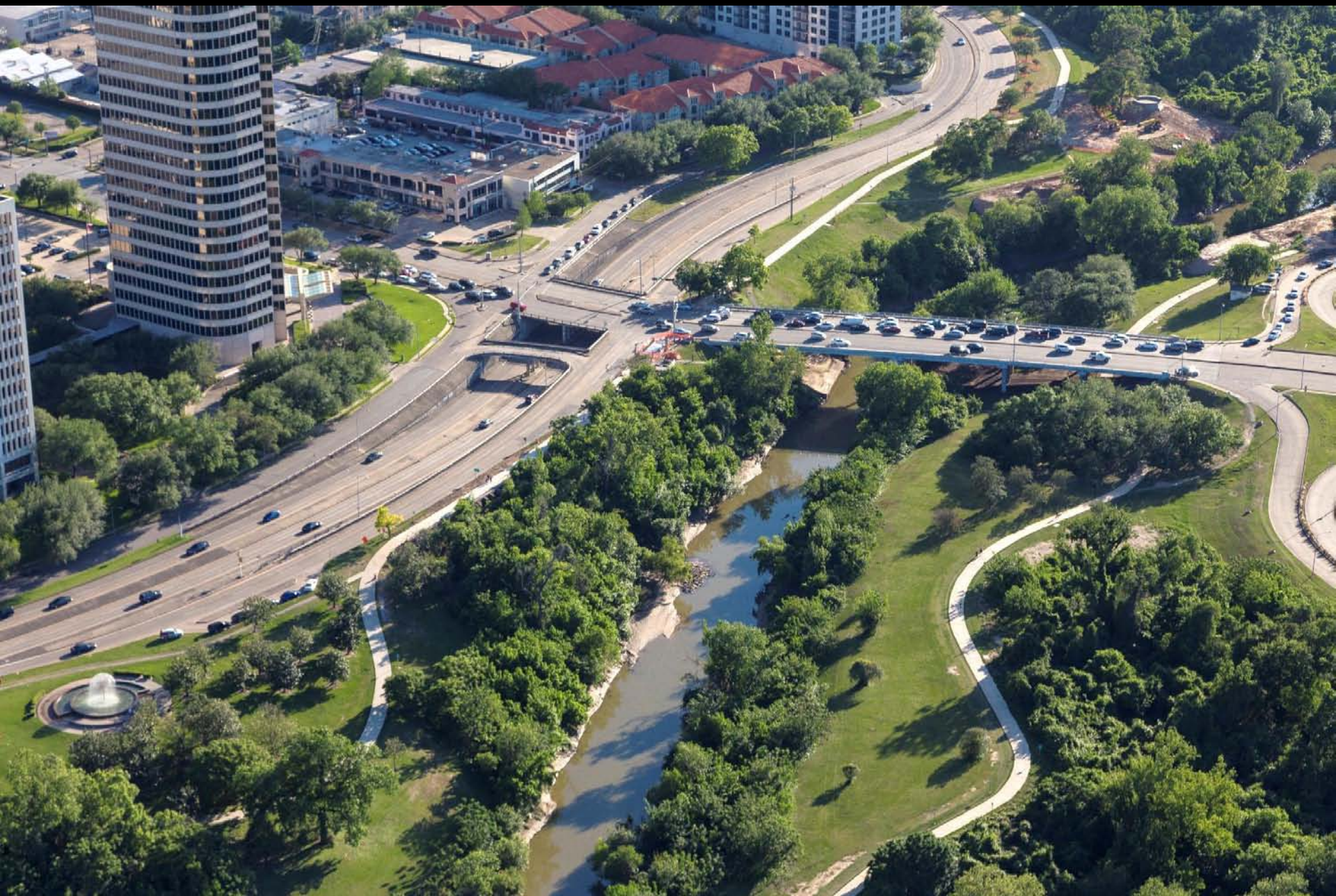














An aerial satellite photograph of New York City, showing the Hudson River, the East River, and the surrounding urban and green areas. The text "NEW YORK" is overlaid in large, bold, yellow capital letters in the center of the image.

NEW YORK



NYC IS PARKS

A map of New York City with green highlights indicating park areas. The text "NYC IS PARKS" is overlaid in large, bold, yellow letters. The map shows the five boroughs: Manhattan, Bronx, Queens, Richmond, and Kings. The green highlights are scattered across the city, with a higher concentration in the Bronx and Queens. The text is centered over the city.



WILDLIFE INFRASTRUCTURE





POLLINATOR INFRASTRUCTURE





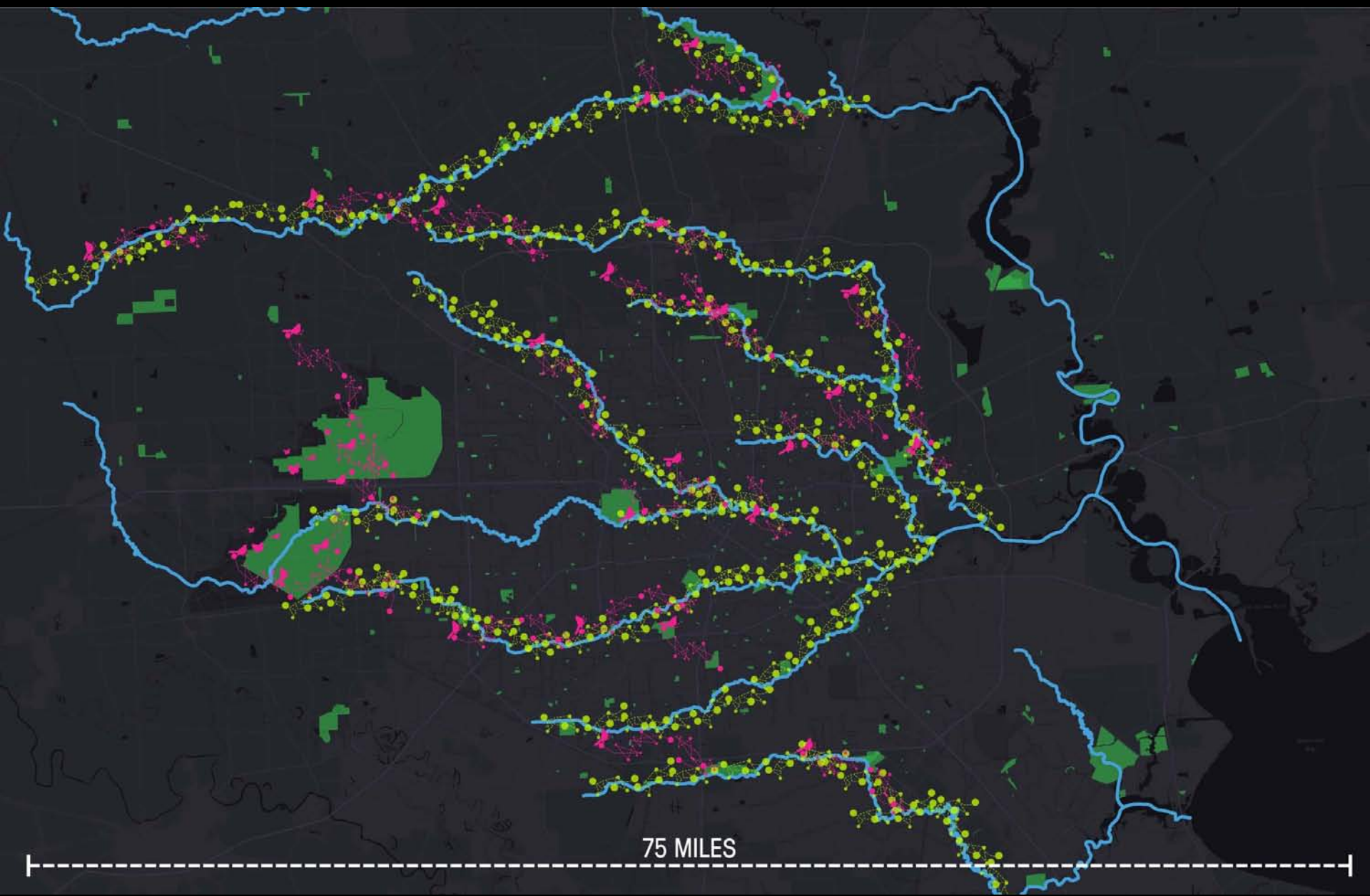
URBAN FOREST INFRASTRUCTURE





WETLAND INFRASTRUCTURE

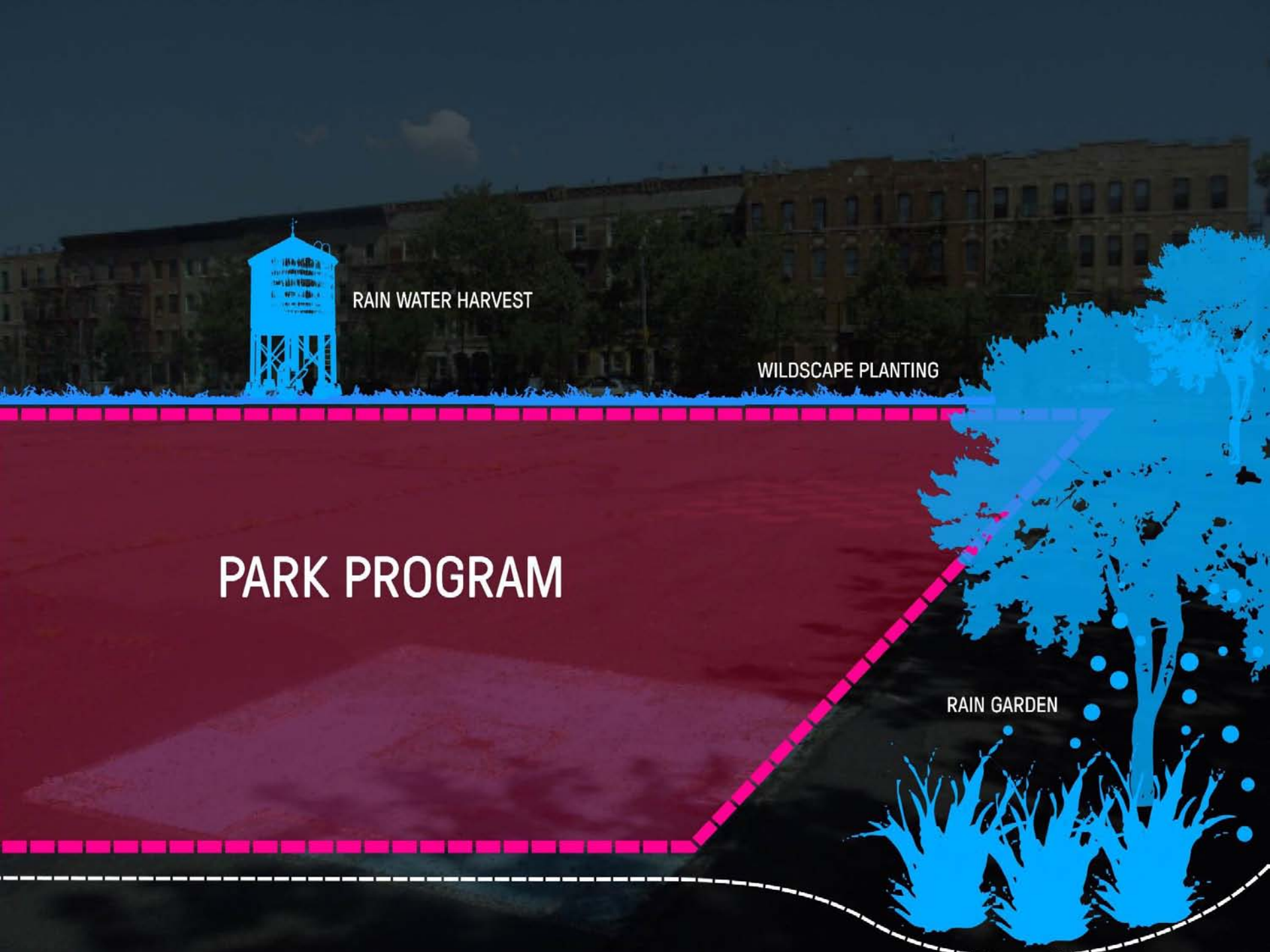






25 MILES





RAIN WATER HARVEST

WILDSCAPE PLANTING

PARK PROGRAM

RAIN GARDEN